

Multi-Family Recycling Collection

Drop-off Only

Blue Bin (Mixed Containers)

Yellow Bin (Mixed Paper)

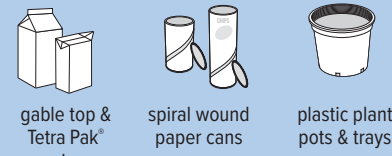
Grey Bin (Glass Bottles and Jars)

Burnaby's Eco-Centre

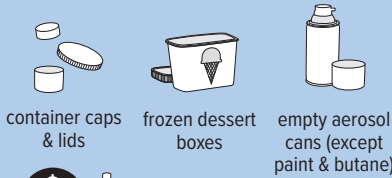
4855 Still Creek Drive (west of Douglas Road)
burnaby.ca/EcoCentre



hard plastic packaging
steel & aluminum packaging, foil
hot & cold drink cups



gable top & Tetra Pak cartons
spiral wound paper cans
plastic plant pots & trays



container caps & lids
frozen dessert boxes
empty aerosol cans (except paint & butane)



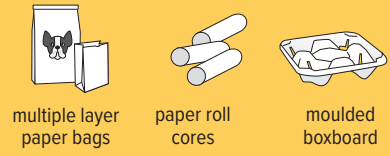
best at depot
refundables



place materials loose in tote



printed paper
boxboard boxes
corrugated cardboard
bundle 2' x 2' and place beside yellow cart



multiple layer paper bags
paper roll cores
moulded boxboard



gift wrap & greeting cards (paper only)
magazines & catalogues
newspapers & flyers



place materials loose in tote



glass jars
glass bottles



place materials loose in tote

No drinking glasses and broken dishes



rinse containers



remove lids and place in blue bin

CARDBOARD ONLY
NO GARBAGE



flatten materials



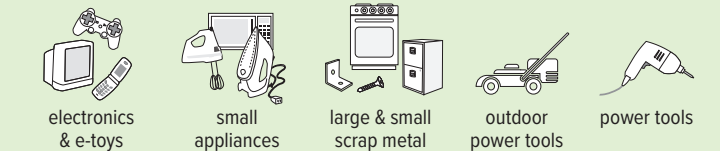
non-food protective packaging (bubble wrap)
crinkly wrappers & bags
plastic bags & overwrap
stand-up & zipper lock pouches



hard plastics
clothing & shoes, books
cooking oil
Styrofoam packaging
batteries



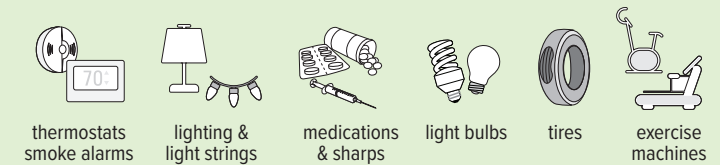
flammable liquids & pesticides
paint
used oil, filters, containers
antifreeze
propane tanks refillable/non-refillable



electronics & e-toys
small appliances
large & small scrap metal
outdoor power tools
power tools

Take-Back Programs

Find out where to take items not accepted in bins or at the Eco-Centre:
604-RECYCLE (604-732-9253)



thermostats
smoke alarms
lighting & light strings
medications & sharps
light bulbs
tires
exercise machines

No Styrofoam™ packaging & no plastic bags



rinse containers



remove lids



flatten materials



nest where possible



cut down large cardboard



flatten materials