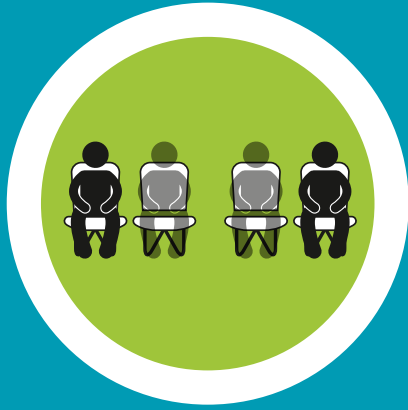


COVID-19

To adhere to the latest government guidance and protect your fellow customers please follow the below steps:



Sit alone where possible

However, on busy journeys you may need to sit next to another customer.



Face coverings must be worn onboard

Protect your fellow customers, please keep your face covering on for the entire journey. Exclusions apply visit: arrivabus.co.uk for details.



Face away from others

Do not sit facing each other.



Wheelchair access

Seats within 2 metres of the driver are taped off, however, wheelchair spaces will always remain available.



No standing

Please follow our no standing policy whilst onboard.



Bus Full

Once maximum advisory capacity is reached, the driver will put up a "bus full" sign and will only stop when customers wish to alight. The same number of customers alighting can then board.



For the latest travel updates and news visit arrivabus.co.uk