

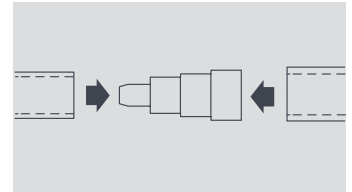
ACCESSORIES

EN

tube / connector fittings

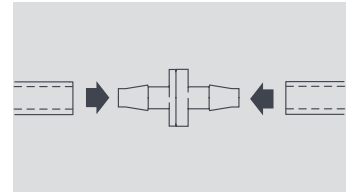
Adaptors/Straight Connectors

RectorSeal Product Code	OPTIONS			Part No.	Pack Qty
	Size	Ideal Use			
83980	6mm – 10mm	1/4" to 3/8"		FP2020	10
83981	6mm, 10mm or 12mm to 16mm	1/4" to 3/8" or 5/8" to 1/2"		FP2632	10



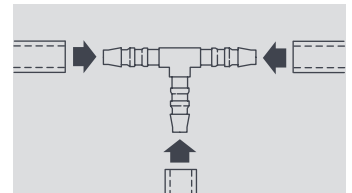
Non-return Valves

RectorSeal Product Code	OPTIONS			Part No.	Pack Qty
	Size	Ideal Use			
83982	6mm (1/4")	Prevents backflow of water		FP2628	10
83983	10mm (3/8")	Prevents backflow of water		FP2630	10



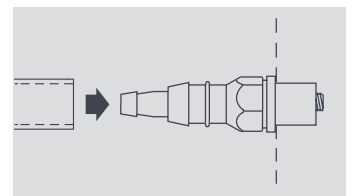
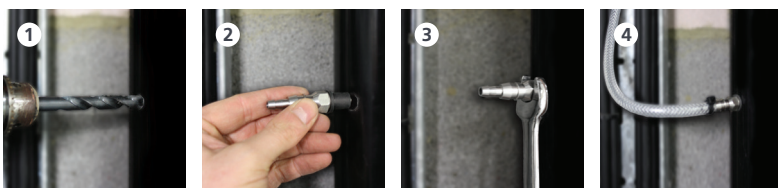
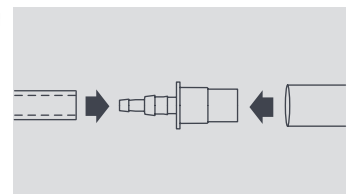
Hose to Hose

RectorSeal Product Code	OPTIONS			Part No.	Pack Qty
	Size	Ideal Use			
83984	6mm (1/4")	Equal "T" Connector		FP2024	10
83985	6mm (1/4")	Elbow Connector		FP2028	10
83986	6mm (1/4")	Straight Connector		FP2622	10
83987	10mm (3/8")	Equal "T" Connector		FP2030	10
83988	10mm (3/8")	Elbow Connector		FP2032	10
83989	10mm (3/8")	Straight Connector		FP2624	10



Hose to Overflow or Waste/Soil Pipe

RectorSeal Product Code	OPTIONS			Part No.	Pack Qty
	Size	Ideal Use			
83991	6mm (1/4") or 10mm (3/8") – 21mm overflow pipe	Hose to Overflow		FP2040	10
83990	6mm (1/4") or 10mm (3/8") – self sealing adaptor	Hose to Waste/Soil Pipe (Drill hole to 11.5mm diameter)		FP2038	10



Note: All connectors should be fitted with the relevant cable ties

Information correct at time of going to press.