

5

4

3

2

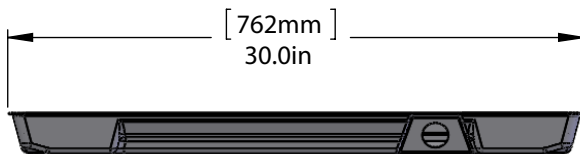
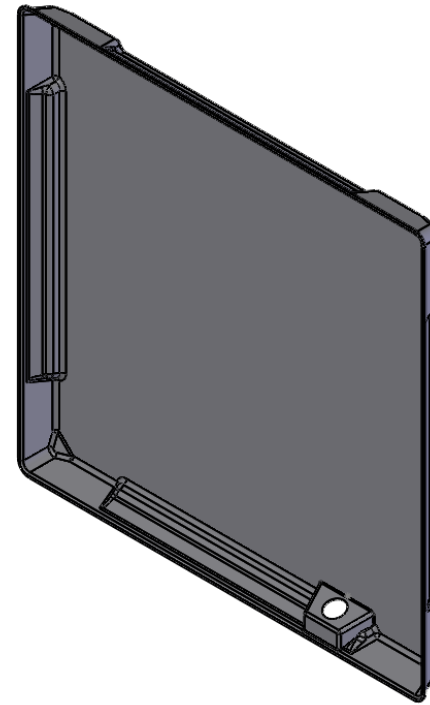
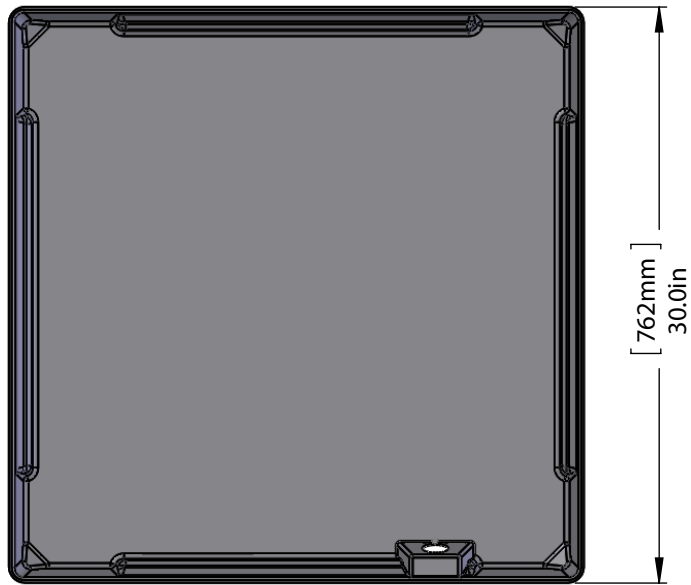
1

C

B

C

B



**NOTES:**

- Extreme Temperature Durability (-40°F to 260°F).
- High Tensile Strength.
- Crack/Split/Leak/Rust Resistant.
- Self Extinguishing.
- Made With Pride in the USA

UNLESS OTHERWISE SPECIFIED:

DIMENSIONS ARE IN INCHES  
 TOLERANCES:  
 FRACTIONAL ±.032  
 ANGULAR: MACH ±.5° BEND ±2°  
 TWO PLACE DECIMAL ±.010  
 THREE PLACE DECIMAL ±.005

INTERPRET GEOMETRIC  
 TOLERANCING PER: ANSI Y14.5, 1994

ENGINEERING	NAME	DATE
DRAWN BY ENG.	DS	10/13/09
CHECKED BY ENG.	JK	10/13/09
ENG APPR.	CC	10/13/09
MFG APPR.	CC	10/13/09

PROPRIETARY AND CONFIDENTIAL

THE INFORMATION CONTAINED IN THIS DRAWING IS THE SOLE PROPERTY OF RECTORSEAL. ANY REPRODUCTION IN PART OR AS A WHOLE WITHOUT THE WRITTEN PERMISSION OF RECTORSEAL IS PROHIBITED.



2601 Spenwick Drive,  
 Houston, TX 77055  
 800-231-3345

TITLE:

AG-T 30x30 SPECIFICATION SHEET

SIZE  
A

SCALE: 1:10

SHEET 1 OF 1

5

4

3

2

1

A