



A CSW Industrials Company

# TRUaire A520 Series

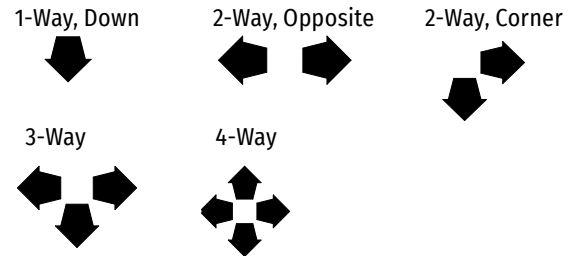
## Extruded Aluminum Modular Core Ceiling Diffusers

Model:		Size:	
<b>Project Information:</b>			
Job Name:			
Location:			
Engineer:			
Submitted to:			
For:	Reference	Approval	Construction
Submitted by:			
Reference:			
<b>Submittal Information:</b>			
Approval:			
Date:			
Construction:			
Unit #:			
Drawing #:			

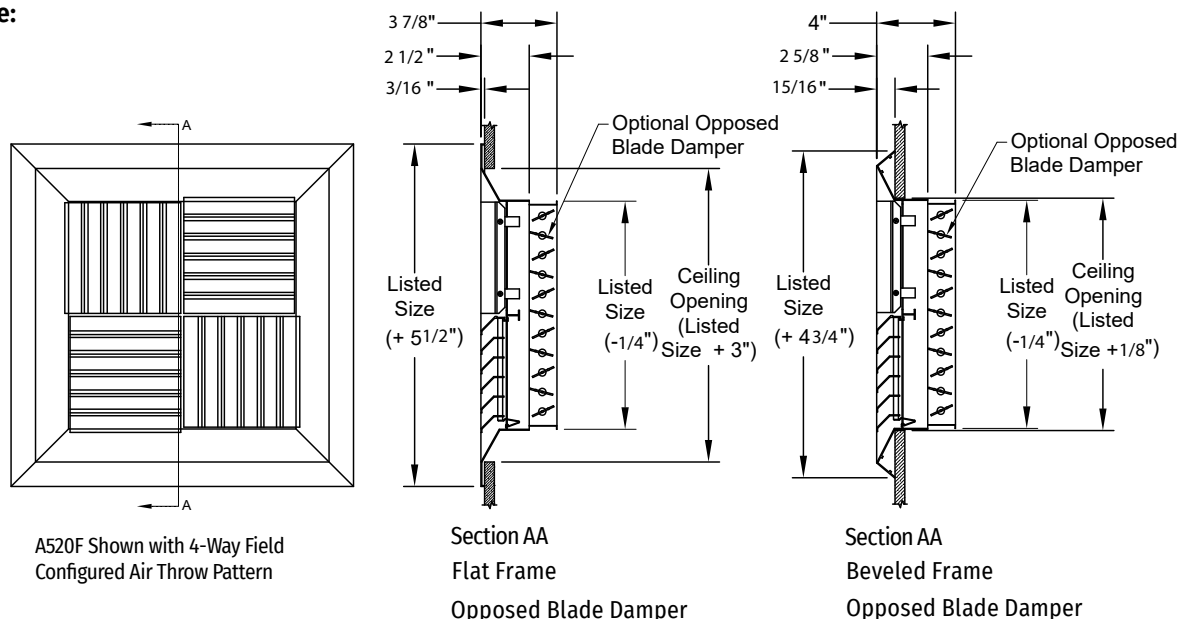
### (Sec. I) Features

- Pristine White Powder Coat Finish
- Field Configurable Air Throw Patterns

### Available Throw Patterns



### (Fig. I) Product Image:



Note: This submittal is meant to demonstrate the general dimensions of this product. The illustrations are not meant to detail every aspect of the product. Drawings are not to scale.



**RectorSeal® • 2601 Spenwick Drive • Houston, TX 77055 • 800-231-3345 • [rectorseal.com](http://rectorseal.com)**

A CSW Industrials Company. RectorSeal, the logos and other trademarks are property of RectorSeal, LLC, its affiliates or its licensors and are protected by copyright, trademark and other intellectual property laws, and may not be used without permission. RectorSeal reserves the right to change specifications without prior notice. ©2023 RectorSeal. All rights reserved. R50956-0323