

ReSound Smart Fit cable guide



Programming interface overview

ITEM NUMBER		DESCRIPTION	1	2	3	4	5	6
1	20310800	Noahlink Wireless						
2	21984000	CS44 – Red, Long						
3	21983900	CS44 – Blue, Long						
4	19533900	CS53 Flex Strip						
5	19902500	PRG ADAPTER 2						
6	19215000	Programming Kit, ENZO						
ReSound Nexia™			RIE, BTE, Rechargeable Customs	CIC	-	-	-	-
ReSound OMNIA™			RIE, BTE, Rechargeable Customs	CIC	-	-	-	-
ReSound ONE™			RIE, BTE	-	-	-	-	-
Customs by ReSound			Rechargeable Customs	CIC	-	-	-	-
ReSound LiNX Quattro™			RIE, BTE, Customs	Customs, RIE 61-DRW, BTE 67-DWT	RIE 62-DRW(T), BTE 77-DWT, BTE 88-DWT	-	-	-
ReSound ENZO Q™			BTE	-	BTE 88-DWHT	BTE 98-DWT	-	-
ReSound Key™			RIE, BTE, Customs	Customs, RIE 61-DRW, BTE 67-DW	RIE 62-DRW, BTE 77-DW, BTE 88-DWH	BTE 98-DW	-	-

NOTE: Strongly recommend to use fresh batteries for non-rechargeable models.

Cable connection for non-wireless programming

Custom models

With the battery door ajar, insert the flex strip into the slot beside the hinge pin. The black dot on the flex strip should be facing away from the battery door. The flex strip is fully inserted when the black dot abuts the hearing instrument case. Close the battery door once the flex strip is inserted.



RIE 62-DRW(T), BTE 77-DWT & BTE 88-DWHT

To connect the programming adaptor, hold it at a 45° angle and insert the small pins at the tip of the adaptor into the square cut-out on the underside of the hearing instrument. Once in place, move the adaptor in the direction of the battery compartment and then gently click it into place.



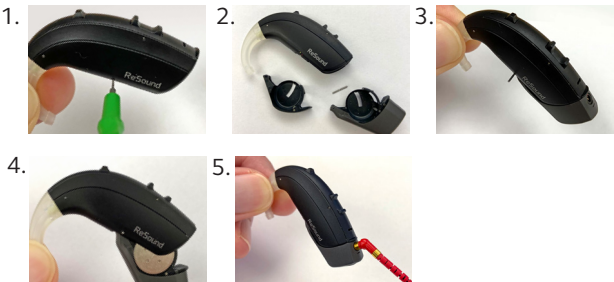
RIE 61-DRW

Locate the programming slot below the push-button. Open the battery door. With the black dot on the flex strip facing the push button on the hearing instrument, insert the flex strip into the slot and close the battery door.



BTE 98-DW(T)

[1] Locate and push out the battery door pin using the pin removal tool. [2] Pull out the battery door and [3] add the ENZO programming adaptor (19215000) and secure it with the pin. [4] Insert a new size #675 battery and close the door. [5] Connect CS44 socket cable.



Mini BTE 67-DWT

Locate the programming slot below the microphone port. With the black dot on the flex strip facing the push button on the hearing instrument, insert the flex strip into the slot, until the black dot abuts the hearing instrument case.



ReSound battery guide

ReSound GN



BEHIND-THE-EAR HEARING AIDS							
BATTERY	RECEIVER-IN-EAR (RIE)			BEHIND-THE-EAR (BTE)			
	Integrated Lithium-ion	#312	#13	Integrated Lithium-ion	#312	#13	#675
ReSound Nexia	NXx60S-DRWC CX160S-DRWC	NXx61-DRW	NXx62-DRW	NXx77-DWC NXx88-DWC	-	-	-
ReSound OMNIA	RUx60-DRWC RUx61-DRWC	RUx61-DRW	RUx62-DRW	RUx77-DWC RUx88-DWC	-	-	-
ReSound ONE	RTx61-DRWC	RTx61-DRW	RTx62-DRW	RTx77-DWC RTx88-DWC RTx88-DWHC	-	-	-
ReSound LiNX Quattro	REx61-DRWC	REx61-DRW	REx62-DRW(T)	-	REx67-DWT	REx77-DWT REx88-DWT	-
ReSound ENZO Q	-	-	-	-	-	EQx88-DWHT	EQx98-DWT
ReSound Key	KEx61-DRWC*	KEx61-DRW	KEx62-DRW	-	KEx67-DW	KEx77-DW KEx88-DWH	KEx98-DW

*Available in US only



CUSTOM HEARING AIDS							
BATTERY	RECHARGEABLE CUSTOM		MIC-IN-HELIX (MIH)	TRADITIONAL CUSTOM			
	Integrated Lithium-ion	Integrated Lithium-ion	#13/312	#10A	#312	#312	#13
ReSound Nexia	NXxITC-DWC**	NXxITE-DWC	-	NXxCIC	-	-	-
ReSound OMNIA	RUxITC-DWC**	RUxITE-DWC	-	RUxCIC	-	-	-
Customs by ReSound	RTxITC-DWC**	RTxITE-DWC	-	RTxCIC	-	-	-
ReSound LiNX Quattro	-	-	RExMIH-W(T)	RExCIC-W	RExITC-DW(T)	RExITE-DW(T)	RExITE-DW(T)
ReSound Key	-	-	-	KExCIC	KExITC-DW	KExITE-DW	KExITE-DW

**Devices will be built as small as possible based on the patient's ear anatomy.

To ensure successful programming, always use a fresh battery. Remove the protective foil from the battery and wait for one to two minutes before inserting the battery into the hearing aid to allow the battery to fully activate.

Manufacturer according to FDA:

GN ReSound North America

8001 E Bloomington Freeway
Bloomington, MN 55420
USA
1-800-248-4327
pro.resound.com

Manufacturer according to Health

Canada:

ReSound Canada

2 East Beaver Creek Road, Building 3
Richmond Hill, ON L4B 2N3
Canada
1-888-737-6863
pro.resound.com

© 2023 GN Hearing A/S. All rights reserved. ReSound is a trademark of GN Hearing A/S.



MK604817 Rev U 2023.12