

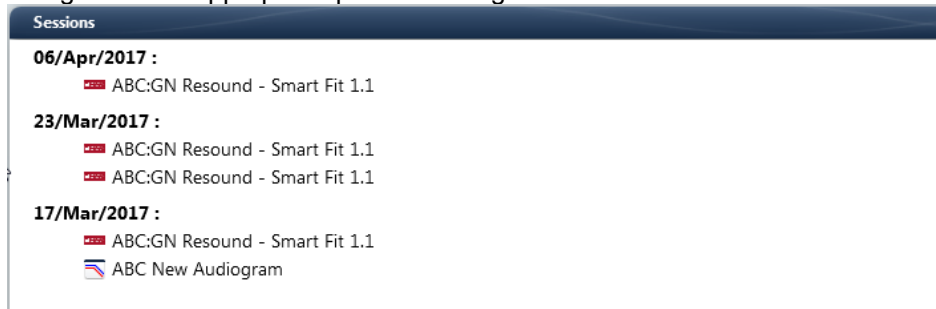
Tech Tips

ReSound GN

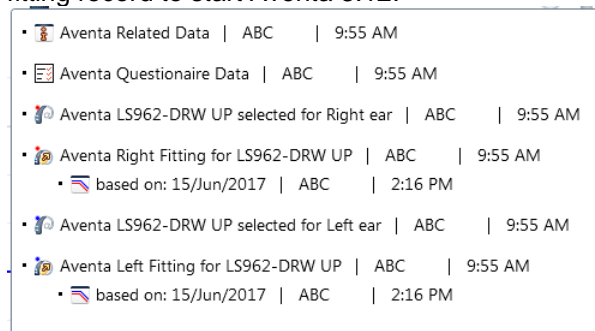
ReSound Smart Fit 1.1 | Getting back to fittings in Aventa 3

Scenario 1 | Historic fitting data is available

Navigate to the appropriate patient's fitting record in Noah.



Hover over session data to check the model of hearing aid that is saved and click on the corresponding fitting record to start Aventa 3.12.



Start connection process from Fitting tab as normal:



Manufacturer according to FDA:

ReSound North America
8001 E. Bloomington Freeway
Bloomington, MN 55420
800.248.4327
resoundpro.com

Manufacturer according to Health Canada:

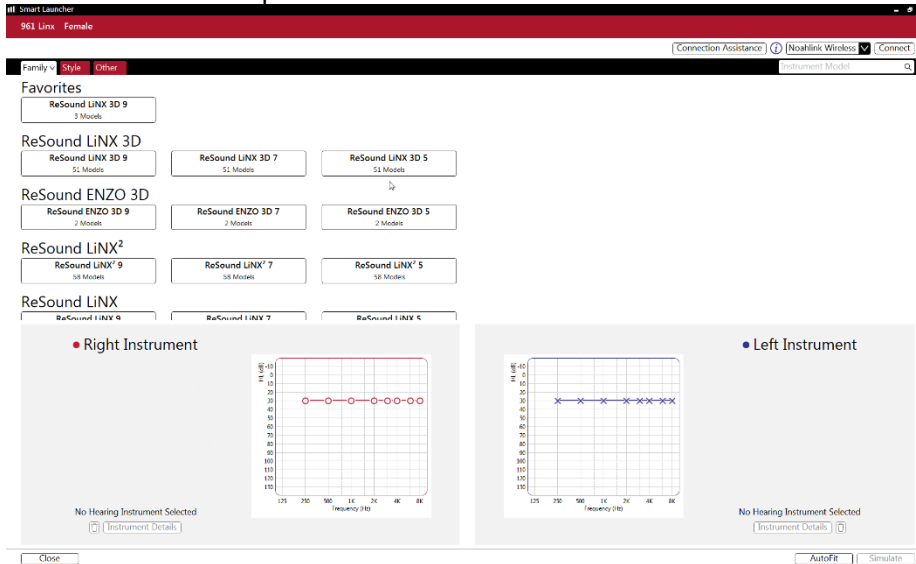
ReSound Canada
303 Supertest Road
Toronto, Ontario M3J 2M4
1.888.737.6863
resoundpro.com

Scenario 2 | No saved fitting data

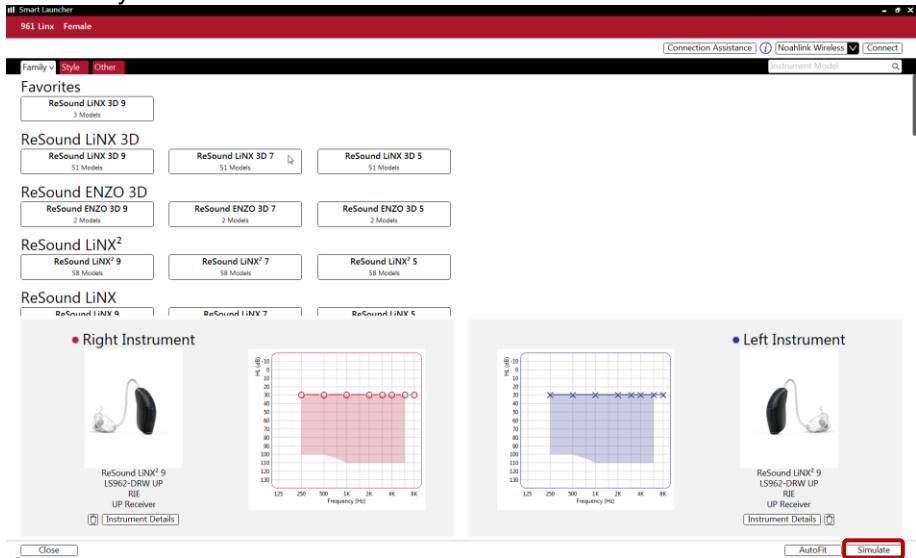
Navigate to the appropriate patient's fitting record in Noah. Click on the Smart Fit icon.



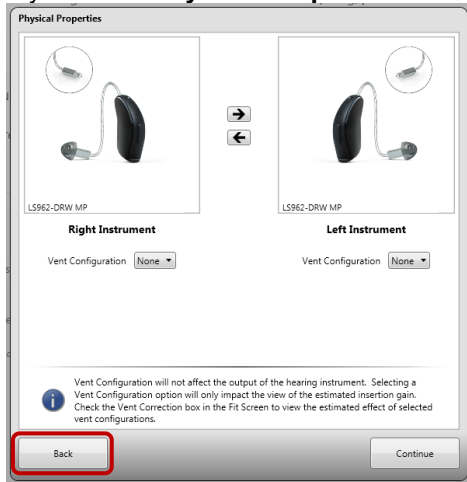
Smart Launcher will open:



Select any Aventa 3 model then click **Simulate**:



If you see a **Physical Properties** screen click **back**.



From the **Start** or **Pre-Fit** tabs, click on **Connect** and continue fitting

