

ReSound GN



Quick guide

ReSound Key
Non-wireless CIC

My hearing aid information

Product: ReSound Key

Model: KE CIC

Serial number (R):

Serial number (L):

Battery size: 10A

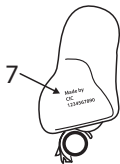
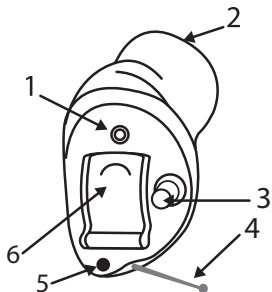
Programs:

(if set up by your hearing care professional)

PROGRAM	WHEN TO USE	BEEPS
1		1
2		2
3		3
4		4

Get to know your hearing aid

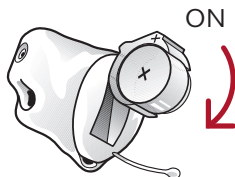
1. Microphone inlet
2. Sound outlet with wax guard
3. Push button (optional)
4. Removal cord
5. Vent (optional)
6. Battery door and On/Off switch
7. Manufacturer, model and serial number.



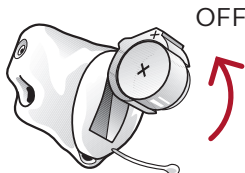
What you need to know

Getting started: On/Off function

ON: Insert battery & completely close battery door. Program 1 will be active.



OFF: Open the battery door. Use fingertip to pull it all the way.



Inserting/Replacing the battery:

1. Open the battery door completely by using your fingertip.



2. Remove protective sticker from battery and wait two minutes before inserting the battery into the hearing aid to allow full activation of the battery.



3. Insert the new battery with the positive side (flat side) in the correct position, as shown.



4. Gently close the battery door (B). If it doesn't close easily, check to see if the battery is upside down.

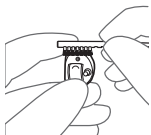
Daily care and maintenance

It is important to keep your hearing aids clean and dry on a daily basis. Use the supplied cleaning tools.

1. Wipe your hearing aids with the cloth.



2. Swipe the small brush across the microphone.



3. Use the supplied cleaning wire to clean the vent that goes through the hearing aid. Insert the wire from the outside of the hearing aid to push out any debris.

NOTE: Never try to put the bristles of the small brush or the cleaning wire into the microphone inlets. This can damage your hearing aids.

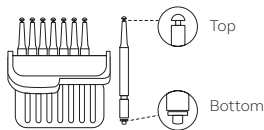
Replacing the wax guards

Custom hearing aids may have wax guards that protect against wax and moisture. It is recommended that these be changed as needed. Consult your hearing care professional for advice on how often you need to change. This will depend on how much wax your ears produce.

Using the wax guard tool

The top end of the tool is for removal of the old wax guard from the sound outlet opening. The sound outlet is found in the part of the hearing aid that goes into the ear.

The bottom end holds the new wax guard which is to replace the removed wax guard.



Box with wax guard tools

1. To remove the old wax guard, insert the removal end of the wax guard tool into the used wax guard so that the shaft of the tool is touching the rim of the wax guard. Slowly pull the wax guard straight out.

2. To insert the new wax guard, gently press the replacement end of the wax guard tool straight into the hole of the sound outlet until the outer ring lies flush with the outside of the receiver. Pull the tool straight out - the new wax guard should remain in place.

NOTE: Pressing on the new wax guard with the flat side of the wax guard tool can ensure that the wax guard is correctly in place.

For information on obtaining more wax guards contact your hearing care professional to ensure you get the correct wax guards for your hearing aids.

CAUTION: Use only original consumables from the manufacturer, e.g. wax guards.

Beep/tone indicators

BEEP/TONE	INDICATION	ACTION REQUIRED
Ding, ding, ding, dong	Low battery	Change battery
Ding (5 or 10)	Hearing aid is starting up	After dings cease, hearing aid is turned on

Troubleshooting

SYMPTOM	CAUSE	POTENTIAL SOLUTION
No sound	Is the hearing aid turned on?	Turn it on.
	Is there a battery in the hearing aid?	Insert a new battery.
	Is the battery still good?	Replace with a new one.
	Is your ear full of wax?	Visit your physician.
Sound is distorted or weak?	Did your hearing aid get moist?	Use a desiccant (drying kit).
	Is the battery dirty?	Clean it or replace it with a new one.
	The battery is dead	Replace it with a new one.
Battery drains very quickly	Did you leave your hearing aid turned on for long periods of time?	Always switch off your hearing aids when you are not using them, e.g., during the night.
	Is the battery old?	Check the date on the battery pack.

If there are any other problems not mentioned in this guide, please contact ReSound or your hearing care professional.

For more information

**Refer to the user guide included in
your hearing aid box.**

**Your hearing care professional can
be reached at:**

View ReSound hearing aid tutorial
videos at youtube.com/resoundus.

Manufacturer according to FDA:

ReSound North America

8001 E. Bloomington Freeway
Bloomington, MN 55420
1.888.735.4327
resound.com

ReSound Government Services

8001 E. Bloomington Freeway
Bloomington, MN 55420
1.800.392.9932
www.resound.com/veterans



402783011

402783011 Rev A 2024.01