



Quick guide

ReSound OMNIA
60 Rechargeable RIE

My hearing aid information

Product: ReSound OMNIA

Model: RU60-DRWC

Serial number (R):

Serial number (L):

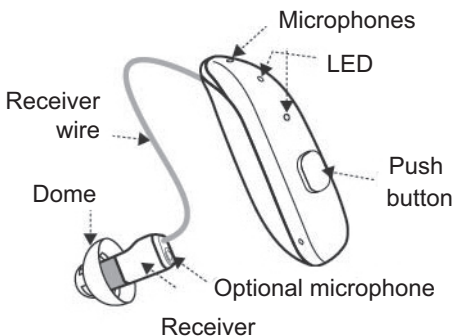
Battery size: Lithium-ion

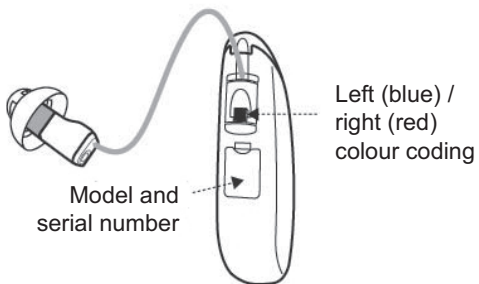
Programs:

(if set up by your hearing care professional)

PROGRAM	WHEN TO USE	BEEPS
1		1
2		2
3		3
4		4

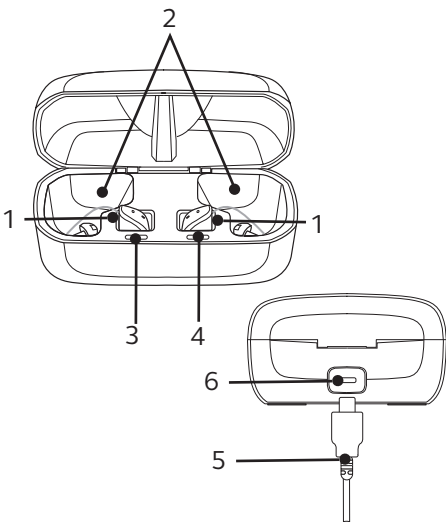
Get to know your hearing aid





Hearing aid charger

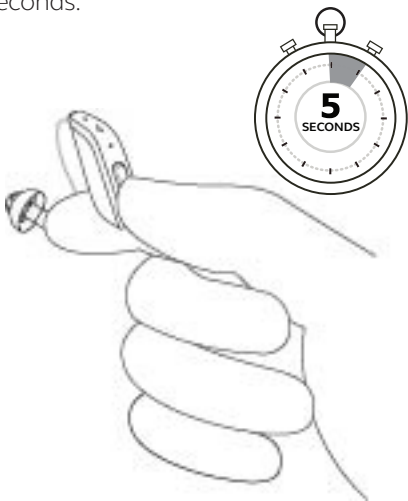
1. Hearing aid charging bay
2. Receiver bay
3. Left indicator (blue)
4. Right indicator (red)
5. Charging cable
6. Charging cable port



What you need to know

Getting started: On/Off function

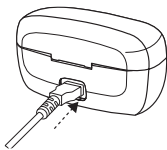
Your hearing aids are automatically turned on when they are removed from the hearing aid charger. They can also be turned on and off manually by pressing the push button for 5 seconds.



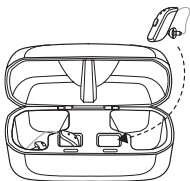
How to charge your hearing aids

Fully charge your hearing aids before using them the first time

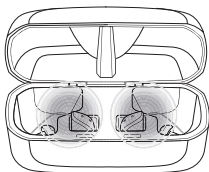
- Plug the power adaptor into a power outlet and connect the charging cable to the hearing aid charger.



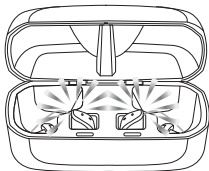
- Place both hearing aids in the charging bays. The right side is marked with a red dot and the left side is marked by a blue dot.
- Place hearing aids so the receivers go into the receiver bay.



- While your hearing aids are charging, the on/off light on your hearing aid will blink slowly. When fully charged, the light remains on (not blinking) until your hearing aid is removed from the charger.



When charging – blinking



When fully charged –
on until removed

Flight mode:

Some airlines prohibit the use of wireless hearing aids (RF transmitters) onboard.

To use Flight mode, make sure this is activated by your hearing care professional.

Follow these steps to turn on Flight mode:

1. Turn the hearing aid off.
2. Press the push button for 9 seconds.
3. The hearing aid responds with four times double flashes and double-dings for ten seconds.

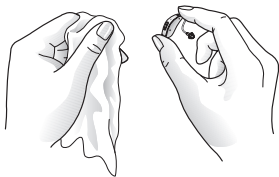
To deactivate Flight mode:

1. Turn the hearing aids off and then on.

Regular care & maintenance

Daily: Clean your hearing aid.

Keep your hearing aids dry. Clean the hearing aids using a soft cloth or tissue.



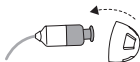
Weekly: Clean the receiver tubes and domes (B & C).

Use a soft cloth to clean the receiver tube and dome on the outside. Do not use water when you are cleaning the receiver tubes.

As needed: Change domes (C)

ReSound standard domes

1. Push the new dome over the ribbed end of the receiver wire.



2. Check that the dome is securely mounted by carefully lifting the lower part of the dome and verifying that the collar completely covers the ribbed end of the wire. When placed correctly, the dome will appear slightly angled.



ReSound tulip domes

Tulip domes consist of two “petals”. It is important that the largest petal is the outermost petal. To ensure this:

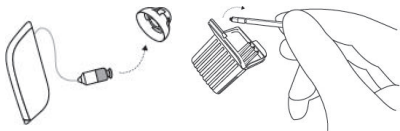
1. Push the largest petal back, then press the tulip dome over the ribbed end of the receiver wire.
2. Then push the largest “petal” back, and it will be placed on top of the smaller petal.



Monthly: Change the wax guard or see your hearing care professional.

For changing white wax guards, complete the following steps:

1. **Removal:** Remove the dome from the receiver wire. Open the wax filter case and take one of the tools out.



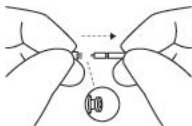
Each tool has a small hook in one end and a new wax filter in the other. Insert the removal tip into the used wax filter and then pull the tool straight out. It is important to pull it straight and not on an angle.



2. **Insertion:** Insert the other end of the tool into the sound outlet (the end with the replacement filter). Gently press the replacement straight into



the sound outlet until the outer ring is touching the sound outlet. Pull the tool straight out – your new wax filter will remain in place. Re-attach your dome or a replacement dome.



Beep/tone indicators

BEEP/TONE	INDICATION
Ding, ding, ding, dong	Low battery
Ding (5 or 10)	Hearing aid is starting
Ding-ding, ding-ding, etc.	Hearing aid is in full
Ripple tone	Hearing aid is in stream mode

If there are any other problems not mentioned here, contact your hearing care professional.

ACTION REQUIRED

Charge battery

Waking up After dings cease, hearing aid is turned on

Flight mode Use in flight mode if desired, or turn the hearing aids off and then on

Streaming Use with wireless accessory or press the push button to exit streaming mode

If you are unable to find the information in this guide, please contact ReSound

Troubleshooting

SYMPTOM	CAUSE
No sound	Blocked earmold Blocked wax guard
Not loud enough	Blocked earmold Change in hearing Excessive ear wax
Excessive whistling/feedback	Incorrect earmold Incorrect dome Excessive ear wax If none of the above
Wireless does not work	Device may be out of range
Hearing aid is not charging	Does the hearing aid fit in the charger? Is the hearing aid fully charged?

	POSSIBLE REASONS
Ear mold or tube	Clean earmold or tube
Wax guard	Replace wax guard
Ear mold or dome (C)	Clean earmold, reinsert
Volume too low	Consult your hearing professional
Wax	Consult your hearing professional
Ear mold placement	Re-insert earmold
Dome (C) placement	Re-insert dome
Wax	Clean guard/conduit
Volume too low	Consult your hearing professional
Device in flight mode	Turn the hearing aid off
Hearing aid not sitting correctly in the ear	Reinsert the hearing aid
Hearing aid charger not charged?	Plug the charging cable into the hearing aid charger cable to the power source

REMEDY

or tube

or consult your hearing care professional

replace dome (C), replace guard

hearing care professional

hearing care professional

ld carefully

(C)

consult your hearing care professional

hearing care professional

g aid off and then back on

ring aid in the charger.

r into a power outlet and connect the
the hearing aid charger.

For more information

**Refer to the user guide included in
your hearing aid box.**

**Your hearing care professional can
be reached at:**

View ReSound hearing aid tutorial
videos at youtube.com/resoundus.

**Manufacturer according
to FDA:**

GN ReSound North America

8001 E Bloomington Freeway
Bloomington, MN 55420
USA
1.888.735.4327
resound.com

ReSound Government Services

8001 E Bloomington Freeway
Bloomington, MN 55420
USA
1.800.392.9932
www.resound.com/veterans



402315011

402315011 Rev A 2023.01