

# Quick guide

ReSound OMNIA

61 Rechargeable RIE

**GN** Making Life Sound Better

# My hearing aid information

**Product:** ReSound OMNIA

**Model:** RU61-DRWC

**Serial number (R):**

---

**Serial number (L):**

---

**Battery size:** Lithium-ion

## Programs:

(if set up by your hearing care professional)

PROGRAM	WHEN TO USE	BEEPS
1		1
2		2
3		3
4		4

# Get to know your hearing aid

A. Push button

B. Receiver

C. Open dome

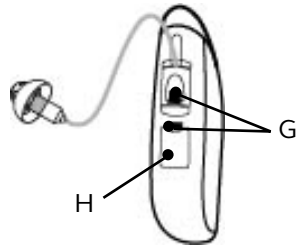
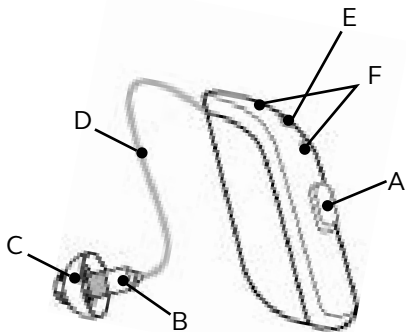
D. Receiver wire

E. LED light indicator

F. Microphones

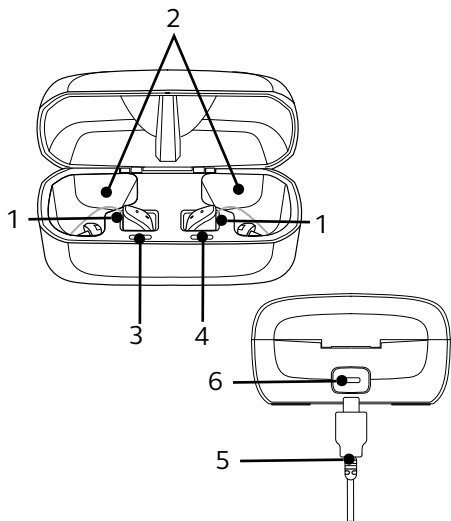
G. Right/Left indicator

H. Serial number and model



## Hearing aid charger

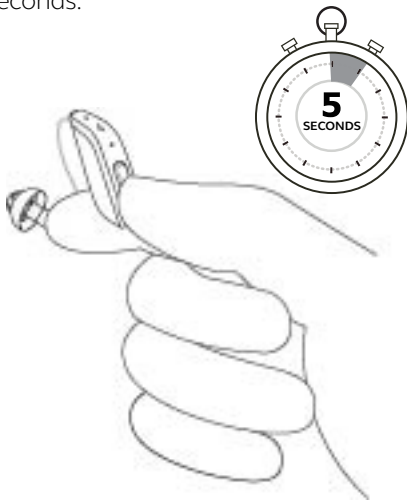
1. Hearing aid charging bay
2. Receiver bay
3. Left indicator (blue)
4. Right indicator (red)
5. Charging cable
6. Charging cable port



## What you need to know

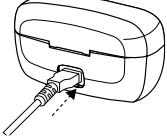
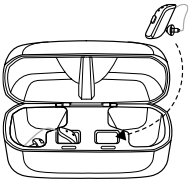

### Getting started: On/Off function

Your hearing aids are automatically turned on when they are removed from the hearing aid charger. They can also be turned on and off manually by pressing the push button for 5 seconds.

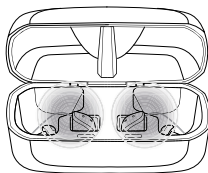


# How to charge your hearing aids

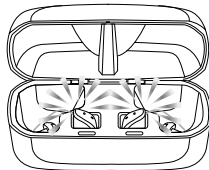
Fully charge your hearing aids before using them the first time

- Plug the power adaptor into a power outlet and connect the charging cable to the hearing aid charger.
- Place both hearing aids in the charging bays. The right side is marked with a red dot and the left side is marked by a blue dot.
- Place hearing aids so the receivers go into the receiver bay.

- While your hearing aids are charging, the on/off light on your hearing aid will blink slowly. When fully charged, the light remains on (not blinking) until your hearing aid is removed from the charger.



When charging – blinking



When fully charged –  
on until removed

## Flight mode:

Some airlines prohibit the use of wireless hearing aids (RF transmitters) onboard.

To use Flight mode, make sure this is activated by your hearing care professional.

Follow these steps to turn on Flight mode:

1. Turn the hearing aid off.
2. Press the push button for 9 seconds.
3. The hearing aid responds with four times double flashes and double-dings for ten seconds.

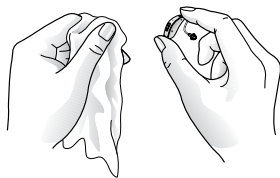
To deactivate Flight mode:

1. Turn the hearing aids off and then on.

## Regular care & maintenance

**Daily:** Clean your hearing aid.

Keep your hearing aids dry. Clean the hearing aids using a soft cloth or tissue.



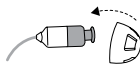
**Weekly:** Clean the receiver tubes and domes (B & C).

Use a soft cloth to clean the receiver tube and dome on the outside. Do not use water when you are cleaning the receiver tubes.

**As needed:** Change domes (C)

*ReSound standard domes*

1. Push the new dome over the ribbed end of the receiver wire.



2. Check that the dome is securely mounted by carefully lifting the lower part of the dome and verifying that the collar completely covers the ribbed end of the wire. When placed correctly, the dome will appear slightly angled.



*ReSound tulip domes*

Tulip domes consist of two “petals”. It is important that the largest petal is the outermost petal. To ensure this:

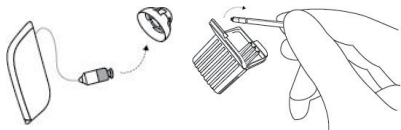
1. Push the largest petal back, then press the tulip dome over the ribbed end of the receiver wire.
2. Then push the largest “petal” back, and it will be placed on top of the smaller petal.



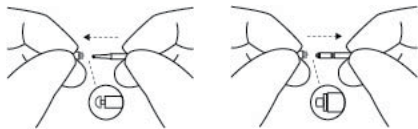
**Monthly:** Change the wax guard or see your hearing care professional.

For changing white wax guards, complete the following steps:

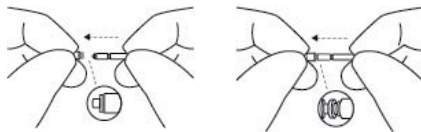
1. **Removal:** Remove the dome from the receiver wire. Open the wax filter case and take one of the tools out.



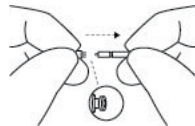
Each tool has a small hook in one end and a new wax filter in the other. Insert the removal tip into the used wax filter and then pull the tool straight out. It is important to pull it straight and not on an angle.



2. **Insertion:** Insert the other end of the tool into the sound outlet (the end with the replacement filter). Gently press the replacement straight into



the sound outlet until the outer ring is touching the sound outlet. Pull the tool straight out – your new wax filter will remain in place. Re-attach your dome or a replacement dome.



## Beep/tone indicators

BEEP/TONE	INDICATION	ACTION REQUIRED
Ding, ding, ding, dong	Low battery	Charge battery
Ding (5 or 10)	Hearing aid is starting up	After dings cease, hearing aid is turned on
Ding-ding, ding-ding, etc.	Hearing aid is in flight mode	Use in flight mode if desired, or turn the hearing aids off and then on
Ripple tone	Hearing aid is in streaming mode	Use with wireless accessory or press the push button to exit streaming mode

If there are any other problems not mentioned in this guide, please contact ReSound or your hearing care professional.

## Troubleshooting

SYMPTOM	CAUSE	POSSIBLE REMEDY
No sound	Blocked earmold or tube	Clean earmold or tube
	Blocked wax guard	Replace wax guard or consult your hearing care professional
Not loud enough	Blocked earmold or dome (C)	Clean earmold, replace dome (C), replace guard
	Change in hearing, volume too low	Consult your hearing care professional
	Excessive ear wax	Consult your hearing care professional
Excessive whistling/feedback	Incorrect earmold placement	Re-insert earmold carefully
	Incorrect dome (C) placement	Re-insert dome (C)
	Excessive ear wax	Clean guard/consult your hearing care professional
	If none of the above	Consult your hearing care professional
Wireless does not work	Device may be in flight mode	Turn the hearing aid off and then back on
Hearing aid is not charging	Does the hearing aid sit correctly in the charger?	Reinsert the hearing aid in the charger.
	Is the hearing aid charger charged?	Plug the charger into a power outlet and connect the charger cable to the hearing aid charger.

For more information

**Refer to the user guide included in  
your hearing aid box.**

**Your hearing care professional can  
be reached at:**

---

---

---

---

View ReSound hearing aid tutorial  
videos at [youtube.com/resoundus](https://youtube.com/resoundus).

**Manufacturer according  
to FDA:**

**GN ReSound North America**

8001 E Bloomington Freeway  
Bloomington, MN 55420  
USA  
1.888.735.4327  
[resound.com](https://resound.com)

**ReSound Government Services**

8001 E Bloomington Freeway  
Bloomington, MN 55420  
USA  
1.800.392.9932  
[www.resound.com/veterans](https://www.resound.com/veterans)



402048011

402048011 Rev A 2020.07