



## Quick guide

ReSound OMNIA 61 RIE

**GN** Making Life Sound Better

# My hearing aid information

**Product:** ReSound OMNIA

**Model:** RU61-DRW

**Serial number (R):**

---

**Serial number (L):**

---

**Battery size:** 312

**Programs:**  
(if set up by your hearing care professional)

PROGRAM	WHEN TO USE	BEEPS
1		1
2		2
3		3
4		4

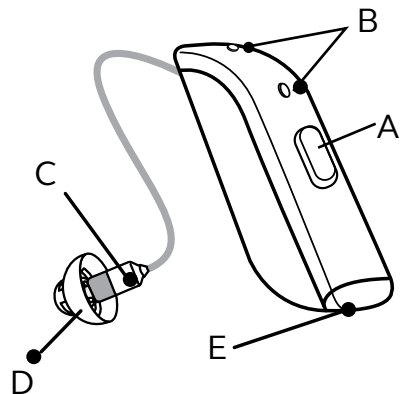
## Get to know your hearing aid

A. Program button

B. Microphones

C. Receiver

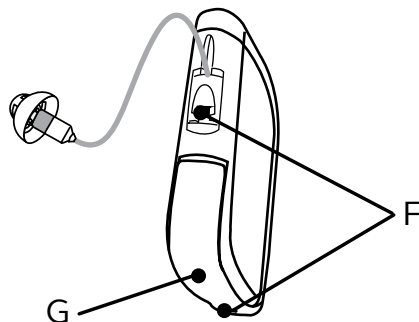
D. Dome



E. Battery door

F. Right/Left indicator

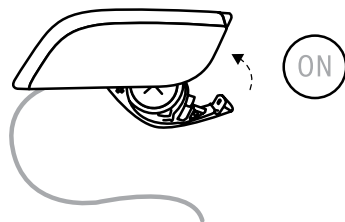
G. Serial number and model



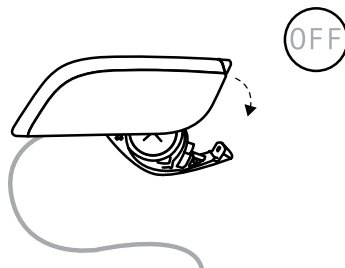
## What you need to know

**Getting started:** On/Off function

**ON:** Insert battery & completely close battery door (E). Program 1 will be active.

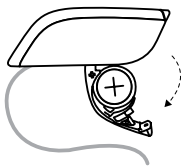


**OFF:** Open the battery door (E). Use fingertip to pull it all the way.



## Inserting/Replacing the battery:

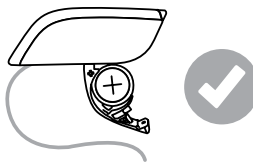
1. Open the battery door (E) completely by using your fingertip.



2. Remove protective sticker from battery and wait two minutes before inserting the battery into the hearing aid to allow full activation of the battery.



3. Insert the new battery with the positive side (flat side) in the correct position, as shown.



4. Gently close the battery door. If it doesn't close easily, check to see if the battery is upside down.

## Flight mode:

Some airlines prohibit the use of wireless hearing aids (RF transmitters) onboard. If required by your airline, enable flight mode:

**Disable wireless operation** by opening and closing the battery door three times within ten seconds (open-close, open-close, open-close). Your instruments will now be in flight mode.

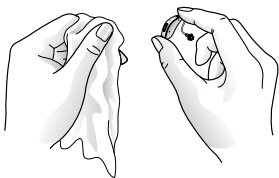
The hearing aids must function in flight mode for ten seconds before wireless operation can be re-enabled.

**To re-enable wireless operation**, open and close the battery door one time and wait thirty seconds before opening the battery door again to avoid accidentally entering flight mode again.

## Regular care & maintenance

**Daily:** Clean your hearing aid.

Keep your hearing aids dry. Clean the hearing aids using a soft cloth or tissue.



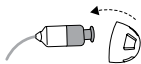
**Weekly:** Clean the receiver tubes and domes (C & D).

Use a soft cloth to clean the receiver tube and dome on the outside. Do not use water when you are cleaning the receiver tubes.

**As needed:** Change domes (D)

*ReSound standard domes*

1. Push the new dome over the ribbed end of the receiver wire.



2. Check that the dome is securely mounted by carefully lifting the lower part of the dome and verifying that the collar completely covers the ribbed end of the wire. When placed correctly, the dome will appear slightly angled.



*ReSound tulip domes*

Tulip domes consist of two “petals”. It is important that the largest petal is the outermost petal. To ensure this:

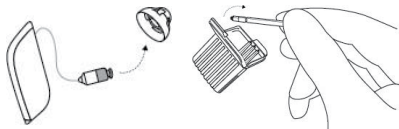
1. Push the largest petal back, then press the tulip dome over the ribbed end of the receiver wire.
2. Then push the largest “petal” back, and it will be placed on top of the smaller petal.



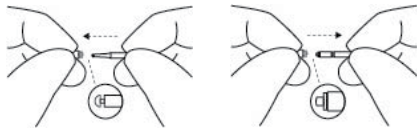
**Monthly:** Change the wax guard or see your hearing care professional.

For changing white wax guards, complete the following steps:

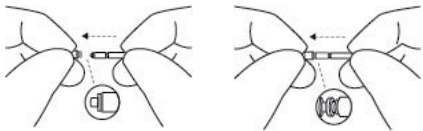
1. **Removal:** Remove the dome from the receiver wire. Open the wax filter case and take one of the tools out.



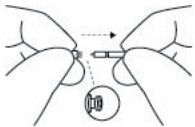
Each tool has a small hook in one end and a new wax filter in the other. Insert the removal tip into the used wax filter and then pull the tool straight out. It is important to pull it straight and not on an angle.



2. **Insertion:** Insert the other end of the tool into the sound outlet (the end with the replacement filter). Gently press the replacement straight into



the sound outlet until the outer ring is touching the sound outlet. Pull the tool straight out – your new wax filter will remain in place. Re-attach your dome or a replacement dome.



### Beep/tone indicators

BEEP/TONE	INDICATION	ACTION REQUIRED
Ding, ding, ding, dong	Low battery	Change battery
Ding (5 or 10)	Hearing aid is starting up	After dings cease, hearing aid is turned on
Ding-ding, ding-ding, etc.	Hearing aid is in flight mode	Use in flight mode if desired, or open-close battery door (E) to exit flight mode
Ripple tone	Hearing aid is in streaming mode	Use with wireless accessory or press multi-function button to exit streaming mode

## Troubleshooting

SYMPTOM	CAUSE	POSSIBLE REMEDY
No sound	Battery door (E) not closed	Turn on by closing the battery door (E)
	Dead battery	Replace battery
	Battery door (E) will not close	Insert battery properly
	Blocked earmold or tube	Clean earmold or tube
	Blocked wax guard	Replace wax guard or consult your hearing care professional
Not loud enough	Blocked earmold or dome (D)	Clean earmold, replace dome (D), replace guard
	Change in hearing, volume too low	Consult your hearing care professional
	Excessive ear wax	Consult your hearing care professional
Excessive whistling/feedback	Incorrect earmold placement	Re-insert earmold carefully
	Incorrect dome (D) placement	Re-insert dome (D)
	Excessive ear wax	Clean guard/consult your hearing care professional
	If none of the above	Consult your hearing care professional
Wireless does not work	Device may be in flight mode	Open and close the battery door (E) once. Wireless operation will reactivate ten seconds later.

If there are any other problems not mentioned in this guide, please contact ReSound or your hearing care professional.

For more information

**Refer to the user guide included in your hearing aid box.**

**Your hearing care professional can be reached at:**

---

---

---

---

View ReSound hearing aid tutorial videos at [youtube.com/resoundus](https://youtube.com/resoundus).

**Manufacturer according to FDA:**

**GN ReSound North America**

8001 E. Bloomington Freeway

Bloomington, MN 55420

USA

1-888-735-4327

[resound.com](https://resound.com)

**ReSound Government Services**

8001 E. Bloomington Freeway

Bloomington, MN 55420

USA

1-800-392-9932

[www.resound.com/veterans](https://www.resound.com/veterans)



402049011

402049011 Rev A 2022.07