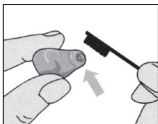


# HF3

## Wax Protection System

### 1. Cleaning the wax filter

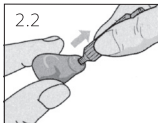
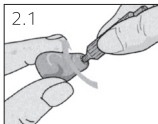
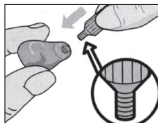
1. Use the small cleaning brush to gently brush away loose wax and debris from the filter at the canal of the hearing instrument.



NOTE: DO NOT USE THE WAX LOOP AS IT MAY DAMAGE THE FILTER RING.

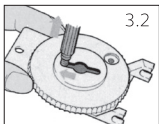
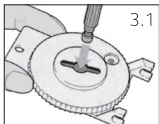
### 2. Remove the used wax filter

1. Screw the metal end of the blue tool into the wax filter on the hearing device approximately one and a half turns.
2. Pull the blue tool out from the hearing device. The wax filter should pull out with the tool. If not, repeat step one, screwing the tool in a bit more.



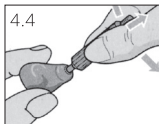
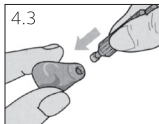
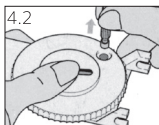
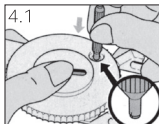
### 3. Disposing of the used filter

1. Slide the tool with the used filter attached into the center slot of the filter ring.
2. Slide the tool to the side. The used filter will remain in the slot when you lift the blue tool straight out.



### 4. Install a new filter

1. Press down on a new filter in the ring with the plastic end of the tool.
2. Lift straight up. A new filter will cling to the end of the tool.
3. Press the new filter straight into the canal tip of the hearing device.
4. Move the blue tool gently side to side and pull it away from the hearing device. The new filter is now installed on the hearing device.



400824011