

ReSound Smart Fit cable guide

Programming interface overview

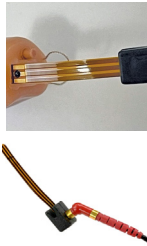
ITEM NUMBER	DESCRIPTION	1	2	3	4	5	6
1	20310800	Noahlink Wireless					
2	21984000	CS44 – Red, Long					
3	21983900	CS44 – Blue, Long					
4	19533900	CS53 Flex Strip					
5	19902500	PRG ADAPTER 2					
6	19215000	Programming Kit, ENZO					
ReSound OMNIA™		CUSTOMS, RIE, BTE	CIC	-	-	-	-
ReSound LiNX Quattro™		Customs, RIE, BTE	Customs, RIE 61-DRW, BTE 67-DWT	RIE 62-DRWT, BTE 77-DW, BTE 88-DWT	-	-	-
ReSound ENZO Q™		BTE	-	BTE 88-DWHT	BTE 98-DWT	-	-

NOTE: Strongly recommend to use fresh batteries for non-rechargeable models.

Cable connection for non-wireless programming

Custom models

With the battery door ajar, insert the flex strip into the slot beside the hinge pin. The black dot on the flex strip should be facing away from the battery door. The flex strip is fully inserted when the black dot abuts the hearing instrument case. Close the battery door once the flex strip is inserted.



RIE 62-DRWT, BTE 77-DWT & BTE 88-DWHT

To connect the programming adaptor, hold it at a 45° angle and insert the small pins at the tip of the adaptor into the square cut-out on the underside of the hearing instrument. Once in place, move the adaptor in the direction of the battery compartment and then gently click it into place.



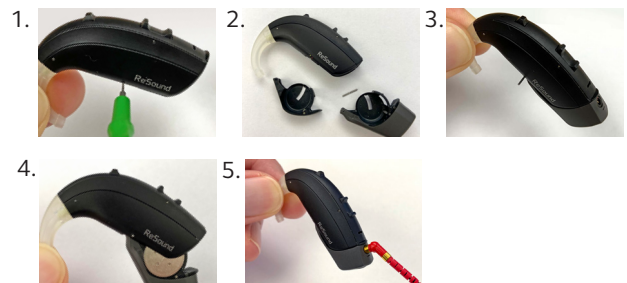
RIE 61-DRW

Locate the programming slot below the push-button. Open the battery door. With the black dot on the flex strip facing the push button on the hearing instrument, insert the flex strip into the slot and close the battery door.



BTE 98 -DWT

[1] Locate and push out the battery door pin using the pin removal tool. [2] Pull out the battery door and [3] add the ENZO programming adaptor (19215000) and secure it with the pin. [4] Insert a new size #675 battery and close the door. [5] Connect CS44 socket cable.



Mini BTE 67-DWT

Locate the programming slot below the microphone port. With the black dot on the flex strip facing the push button on the hearing instrument, insert the flex strip into the slot, until the black dot abuts the hearing instrument case.



ReSound battery guide



BEHIND-THE-EAR HEARING AIDS							
RECEIVER-IN-EAR				TRADITIONAL BEHIND-THE-EAR			
BATTERY	Integrated Lithium-ion	#312	#13	Integrated Lithium-ion	#312	#13	#675
ReSound OMNIA	RU960-DRWC RU961-DRWC	RU961-DRW	RU962-DRW	RU977-DWC RU988-DWC	-	-	-
ReSound LiNX Quattro	RE961-DRWC	RE961-DRW	RE962-DRWT	-	RE967-DWT	RE977-DWT RE988-DWT	-
ReSound ENZO Q	-	-	-	-	-	EQ988-DWHT	EQ998-DWT



CUSTOM HEARING AIDS							
RECHARGEABLE CUSTOM		MICROPHONE-IN-HELIX (MIH)	TRADITIONAL CUSTOM				
BATTERY	Integrated Lithium-ion	Integrated Lithium-ion	#13/312	#10A	#312	#312	#13/312
ReSound OMNIA	RU9ITC-DWC*	RU9ITE-DWC	-	RU9CIC	-	-	-
ReSound LiNX Quattro	-	-	RE9MIH-W (T)	RE9CIC-W	RE9ITC-DW (T)	RE9ITE-DW (T)	RE9ITE-DW (T)

*Devices will be built as small as possible based on the patient's ear anatomy.

To ensure successful programming, always use a fresh battery. Remove the protective seal from the battery and, for best results, wait for one to two minutes before inserting the battery into the hearing aid. This will allow the battery to fully activate.

Manufacturer according to FDA:

ReSound Government Services
 8001 E Bloomington Freeway
 Bloomington, MN 55420
 USA
 800-392-9932

email: VAinfo@gnresound.com
 website: gs.resound.com

