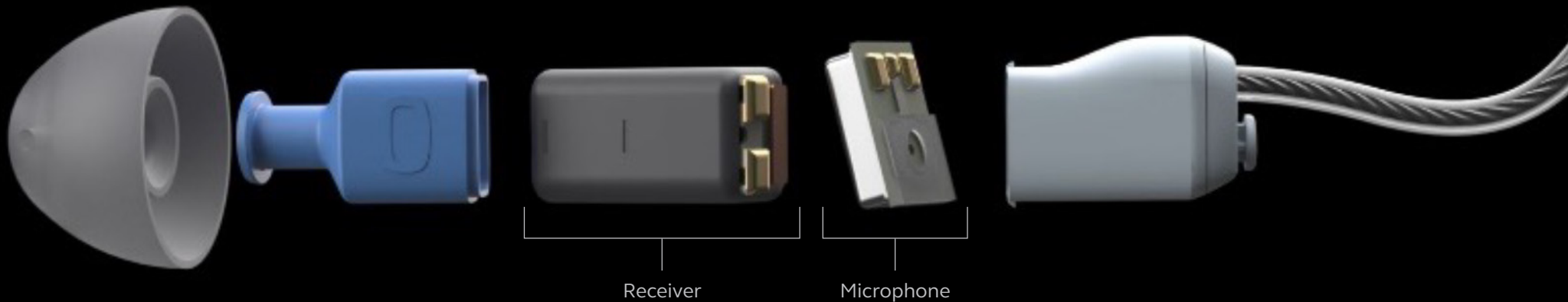


ReSound ONE with M&RIE

Hear like no other with a receiver like no other



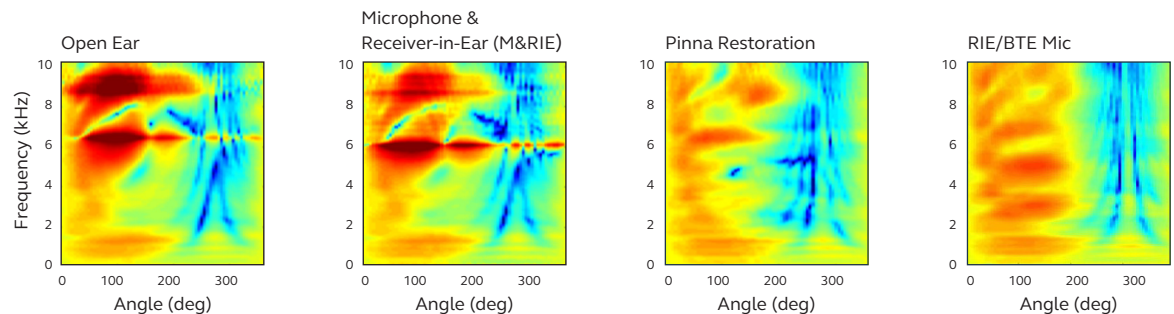
What is M&RIE?

ReSound ONE with M&RIE (Microphone & Receiver-in-Ear) is technology that is 10 years in the making and is exclusive to ReSound. No other receiver on the market today includes a microphone positioned inside the ear canal as an integrated part of the receiver module.

Why should you fit M&RIE?

Patients using ReSound ONE with M&RIE benefit by taking full advantage of the natural localization enhancements that the individual pinna provides. In addition, M&RIE has also been shown to more accurately replicate the natural hearing process as shown below.

The 3-dimensional plots show the intensity measured in the ear canal of different frequency sounds presented at angles from 0-360 degrees. Blue colors indicate less intensity and red colors indicate greater intensity. M&RIE preserves the results of the Open Ear very precisely and more accurate than traditional pinna restoration.

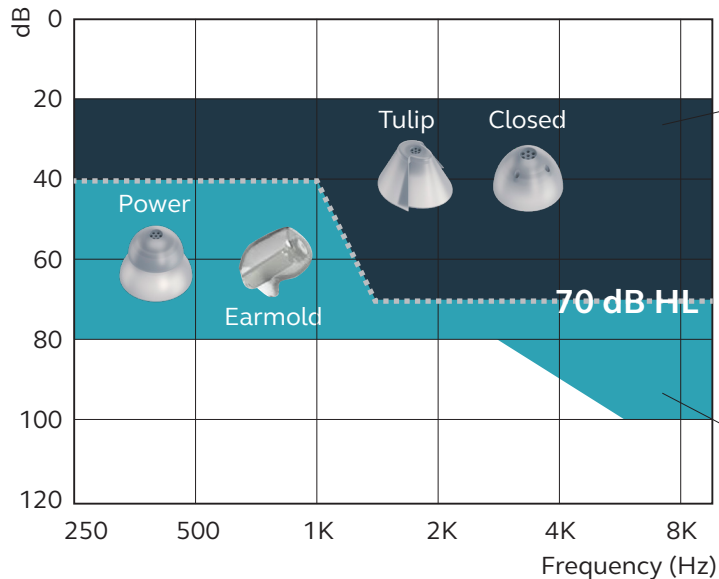


Who can benefit from M&RIE?

Any patient with a hearing loss ranging from mild to severe can benefit from M&RIE.

How should you fit M&RIE?

M&RIE is best for patients whose audiograms fit entirely within the indicated fitting ranges below.



- Best results in this range are obtained with Closed or Tulip dome
- Users rate the Tulip and Closed domes highly for sound quality, own voice and occlusion. Both domes provide the same degree of openness, with a 10 dB vent effect at 500 Hz
- Tulip and Closed domes increase available stable gain by approximately 3 dB relative to the Open dome

- Power domes and Earmolds are recommended for users with hearing loss within this range
- Earmolds can be customized to any hearing loss severity and are an excellent option for patients with moderate-to-severe hearing loss

Manufacturer according to FDA:

GN ReSound North America
8001 E Bloomington Freeway
Bloomington, MN 55420
USA
1-800-248-4327
pro.resound.com

ReSound Government Services
8001 E Bloomington Freeway
Bloomington, MN 55420
USA
1-800-392-9932
gs.resound.com

Manufacturer according to Health Canada:

ReSound Canada
2 East Beaver Creek Road, Building 3
Richmond Hill, ON L4B 2N3
Canada
1-888-737-6863
pro.resound.com