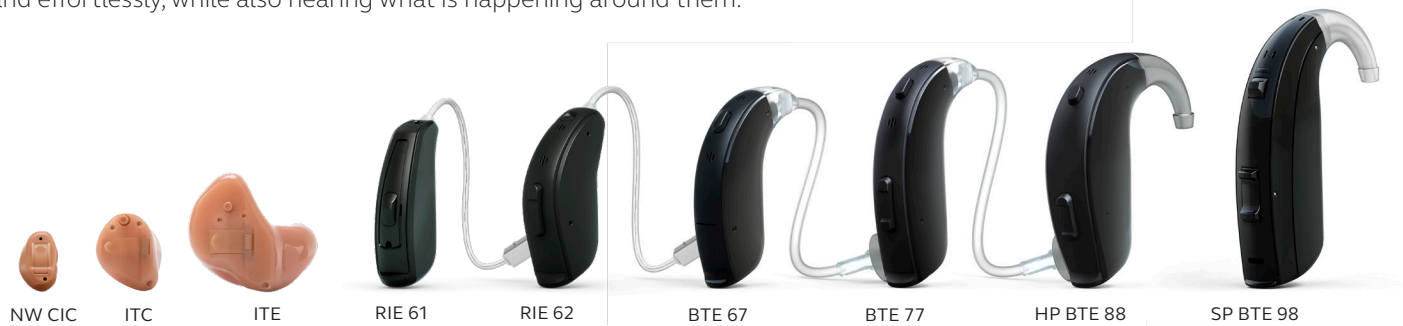


ReSound Key

Everyone deserves great hearing

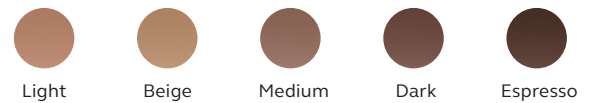
With ReSound Key™, your patients will enjoy the clear, natural sound quality they need to join in conversations, even in noise. They can feel more confident in their daily activities, knowing that they can have conversations with their loved ones easily and effortlessly, while also hearing what is happening around them.



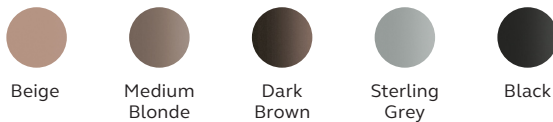
Non-wireless CIC



ITC and ITE



RIE and BTE



ReSound Key highlights



CLEAR sound and essential audiological features



A complete family of devices including our small, non-wireless CIC style



Connectivity with Bluetooth® Low Energy



Direct audio streaming from iOS® and Android™ devices



ReSound Assist Remote Fine-Tuning and Live Assistance

A HOLISTIC APPROACH TO GREATER HEARING

With ReSound Key, your patients will enjoy the clear, natural sound quality they need to join in the conversations, even in noise.

Patients also benefit from multiple features that use the power of binaural hearing and natural sound quality.

- Sounds up to 116 dB SPL are captured very clearly
- Warp compression maps loudness and frequencies based on the function of the human cochlea
- Noise Tracker II reduces background noise for easier listening
- DFS Ultra II adapts to changing environments to prevent feedback and maintain appropriate gain

OFFER REMOTE HEARING CARE

ReSound Assist Remote Fine-tuning and Live Assistance are two powerful options for providing hearing care remotely for the best possible fitting, counseling, and support in a convenient and safe way. Your patients simply need to download the ReSound Smart 3D app to get started.



INTUITIVE AND EFFICIENT FITTINGS

ReSound Smart Fit™ makes fittings easier than ever. Confidently rely on the default feature settings and ensure a better, more comfortable first fit for your patients with Prescribed First Fit and percent gain adjustments. Also benefit from greater flexibility in making fine-tuning adjustments when needed.

Discover more at pro.resound.com

ReSound Canada

2 East Beaver Creek Road, Building 3
 Richmond Hill, ON L4B 2N3
 Canada
 1-888-737-6863
pro.resound.com

RIE MODEL OVERVIEW		KE361-DRW KE362-DRW	KE261-DRW KE262-DRW
DEVICE CONFIGURATION			
Battery size	61-DRW: 312 Zinc-Air 62-DRW: 13 Zinc-Air		
Receiver power levels	LP, MP, HP & UP		
IP Classification	IP68		
Control Options	Telecoil, DAI (KEx62-DRW only)		
AUDIOLOGICAL FEATURES			
WARP compression (WDRC) - number of channels	8	6	
Soft Switching	●	●	
Multiscope Adaptive Directionality	●		
Adaptive Directionality		●	
Environmental Classifier	●	●	
DFS Ultra II	●	●	
Noise Tracker II	●	●	
Wind Guard	●	●	
Expansion	●	●	
Synchronized Acceptance Manager	●		
Low Frequency Boost (Only UP)	●	●	
Tinnitus Sound Generator	●	●	
FUNCTIONAL FEATURES			
Synchronized Push Button*	●		
Synchronized Volume Control**	●		
Smart Start	●	●	
Phone Now	●	●	
Comfort Phone	●		
Direct audio streaming (MFi, Android***)	●		
ReSound Wireless Accessory Compatibility	●	●	
ReSound Smart 3D app	●	●	
RESOUND ASSIST			
Remote Fine-Tuning	●	●	
Live Assistance	●	●	
Remote Firmware Updates	●	●	
FITTING FEATURES			
Fitting Software ReSound Smart Fit 1.10 or higher	●	●	
Fully Flexible Programs	4	4	
Auto DFS	●	●	
Onboard Analyzer II	●	●	
Wireless Fitting with Noahlink Wireless	●	●	

*Also including functionality for synchronized push button and volume control.

**Only for 62 models

***Compatible with Android smartphones that support direct Android streaming to hearing aids.