



## My hearing aid information

**Product:** ReSound Key

**Model:** 67

**Serial Number (R):**

\_\_\_\_\_

**Serial Number (L):**

\_\_\_\_\_

**Battery Size:** 312



## Quick guide

ReSound Key 67

GN Making Life Sound Better

### Push Button:

(if set up by your hearing care professional)

ACTION	RESULT
Short Push	
Long Push	

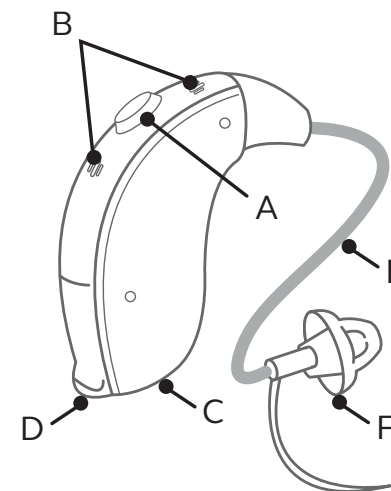
### Programs:

(if set up by your hearing care professional)

PROGRAM	WHEN TO USE	BEEPS
1		1
2		2
3		3
4		4

## Get to know your hearing aid

- A. Program Button
- B. Microphone openings
- C. Right/Left indicator
- D. Battery door
- E. Thin Tube
- F. Dome

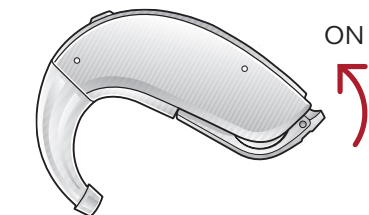


View ReSound hearing aid tutorial videos at [youtube.com/resoundus](https://youtube.com/resoundus)

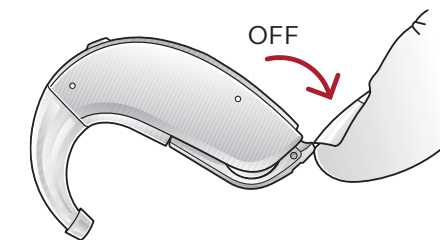
## What you need to know

### Getting Started: On/Off function

**ON:** Insert battery & completely close battery door (D). Program 1 will be active.

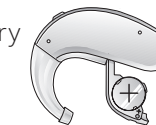


**OFF:** Open the battery door (D). Use fingertip to pull it all the way.



### Inserting/Replacing the battery:

- Open the battery door (D) completely by using your fingertip.
- Remove protective sticker from battery and wait two minutes before inserting the battery into the hearing aid to allow full activation of the battery.



- Insert the new battery with the positive side (flat side) in the correct position, as shown above.
- Gently close the battery door. If it doesn't close easily, check to see if the battery is upside down.

**Flight mode:** (if enabled by your hearing care professional)

Some airlines prohibit the use of wireless hearing aids (RF transmitters) onboard. If required by your airline, enable flight mode:

**Disable wireless operation** by opening and closing the battery door (D) three times within ten seconds (open-close, open-close, open-close). Your instruments will now be in flight mode.

The hearing aids must function in flight mode for ten seconds before wireless operation can be re-enabled.

**To re-enable wireless operation,** open and close the battery door one time and wait thirty seconds before opening the battery door again to avoid accidentally entering flight mode again.

## For more information

Refer to the user guide included in your hearing aid box.

Your hearing care professional can be reached at:

---



---



---

View ReSound hearing aid tutorial videos at [youtube.com/resoundus](https://youtube.com/resoundus).

### Manufacturer according to FDA:

**ReSound North America**  
8001 E. Bloomington Freeway  
Bloomington, MN 55420  
USA  
1-888-735-4327  
[resound.com](https://resound.com)

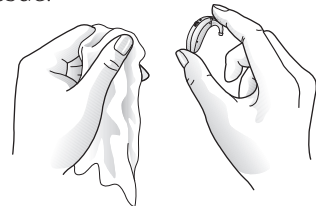
### ReSound Government Services

8001 E. Bloomington Freeway  
Bloomington, MN 55420  
USA  
1-800-392-9932  
[www.resound.com/veterans](https://www.resound.com/veterans)

## Regular care & maintenance

**Daily:** Clean your hearing aid.

Keep your hearing aids dry. Clean the hearing aids using a soft cloth or tissue.



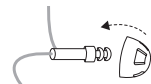
**Weekly:** Clean the thin tubes and domes/earmold.

1. Remove thin tubes (E) from hearing aids before cleaning by unscrewing them counter clockwise.
2. Wipe down thin tubes and domes (F) with a soft cloth.
3. In order to clear the thin tube of moisture and debris, push the black cleaning rod through the thin tube, beginning at the end opposite the dome.

**As needed:** Change dome (F) (if applicable)

*ReSound standard domes*

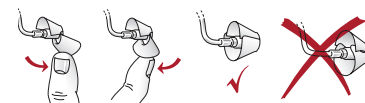
1. Push the new dome on to the thin tube.
2. Make sure that the new dome is properly and securely maintained.



*ReSound tulip domes*

Tulip domes consist of two “petals”. It is important that the largest petal is the outermost petal. To ensure this:

1. Push the largest petal away from the thin tube using a finger. This bends the petal forward.
2. Then push the largest “petal” back, and it will be placed on top of the smaller petal.



## Beep/tone indicators

BEEP/TONE	INDICATION	ACTION REQUIRED
Ding, ding, ding, dong	Low battery	Change battery
Ding (5 or 10)	Hearing aid is starting up	After dings cease, hearing aid is turned on
Ding-ding, ding-ding, etc.	Hearing aid is in flight mode	Use in flight mode if desired, or open-close battery door to exit flight mode
Ripple Tone	Hearing aid is in streaming mode	Use with wireless accessory or press multi-function button to exit streaming mode

View ReSound hearing aid tutorial videos at [youtube.com/resoundus](https://youtube.com/resoundus)

## Troubleshooting

SYMPTOM	CAUSE	POSSIBLE REMEDY
No Sound	Battery door not closed	Turn on by closing the battery door (D)
	Dead battery	Replace battery
	Battery door will not close	Insert battery properly
	Blocked earmold or tube	Clean dome (F) or tube (E)
Not loud enough	Blocked wax filter	Replace wax filter or consult your hearing care professional
	Blocked earmold or dome	Clean earmold, replace dome (F)
	Change in hearing, volume too low	Consult your hearing care professional
Excessive whistling/feedback	Excessive ear wax	Clean dome (F)/consult your hearing care professional
	Incorrect earmold placement	Re-insert earmold carefully
	Incorrect dome placement	Re-insert dome (F)
	Excessive ear wax	Clean dome (F)/consult your hearing care professional
Wireless does not work	If none of the above	Consult your hearing care professional
	Device may be in flight mode	Open and close the battery door (D) once. Wireless operation will reactivate ten seconds later.

If there are any other problems not mentioned in this guide, please contact ReSound or your hearing care professional.

## Notes

---



---



---



---



---



---



---



---