



My hearing aid information

Product: ReSound Key

Model: 77

Serial number (R):

Serial number (L):

Battery size: 13



Quick guide
ReSound Key 77

GN Making Life Sound Better

Program Button (A):

ACTION	RESULT
SHORT push	Program change
LONG push	Activate streaming (if enabled by professional)

Volume Control (C):

ACTION	RESULT
Press UP	Volume increases
Press DOWN	Volume decreases

Programs:

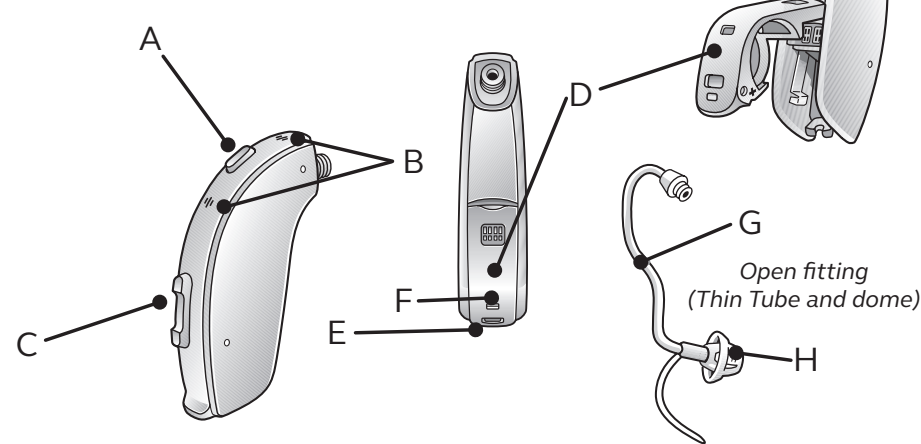
(if set up by your hearing care professional)

PROGRAM	WHEN TO USE	BEEPS
1		1
2		2
3		3
4		4

Get to know your hearing aid

- A. Program button
- B. Microphones
- C. Volume control
- D. Battery door

- E. Right/Left indicator
- F. Groove for DAI/FM boot
- G. Thin tube
- H. Dome

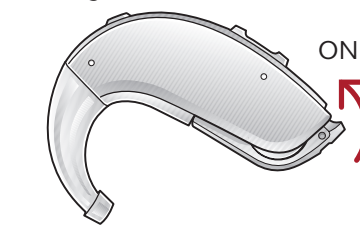


View ReSound's hearing aid tutorial videos at [youtube.com/resoundus](https://www.youtube.com/resoundus).

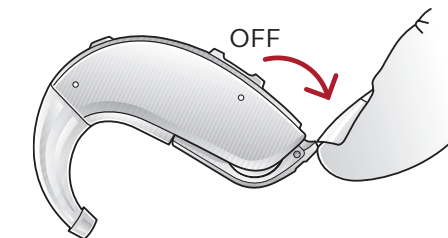
What you need to know

Getting started: On/Off function


ON: Insert battery & completely close battery door (D). Program 1 will be active.



OFF: Open the battery door (D). Use fingertip to pull it all the way.



Inserting/Replacing the battery:

- Open the battery door (D) completely by using your fingertip. 
- Remove protective sticker from battery and wait two minutes before inserting the battery into the hearing aid to allow full activation of the battery. 
- Insert the new battery with the positive side (flat side) in the correct position, as shown. 
- Gently close the battery door. If it doesn't close easily, check to see if the battery is upside down.

Flight mode: (if enabled by your hearing care professional)

Some airlines prohibit the use of wireless hearing aids (RF transmitters) onboard. If required by your airline, enable flight mode:

Disable wireless operation by opening and closing the battery door (D) three times within ten seconds (open-close, open-close, open-close). Your instruments will now be in flight mode.

The hearing aids must function in flight mode for ten seconds before wireless operation can be re-enabled.

To re-enable wireless operation, open and close the battery door one time and wait thirty seconds before opening the battery door again to avoid accidentally entering flight

For more information

Refer to the user guide included in your hearing aid box.

Your hearing care professional can be reached at:

View ReSound hearing aid tutorial videos at [youtube.com/resoundus](https://www.youtube.com/resoundus).

Manufacturer according to FDA:

ReSound North America
8001 E. Bloomington Freeway
Bloomington, MN 55420
1.888.735.4327
[resound.com](https://www.resound.com)

ReSound Government Services
8001 E. Bloomington Freeway
Bloomington, MN 55420
USA
1-800-392-9932
www.resound.com/veterans

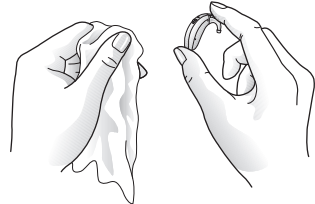


401613011 Rev A 2020.11

Regular care & maintenance

Daily: Clean your hearing aid.

Keep your hearing aids dry. Clean the hearing aids using a soft cloth or tissue.



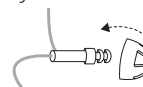
Weekly: Clean the thin tubes and domes/earmold.

1. Remove thin tubes (G) from hearing instruments before cleaning by unscrewing them counter clockwise.
2. Wipe down thin tubes and domes (H) with a soft cloth.
3. In order to clear the thin tube of moisture and debris, push the black cleaning rod through the thin tube, beginning at the end opposite the dome.

As needed: Change dome (H) (if applicable)

ReSound standard domes

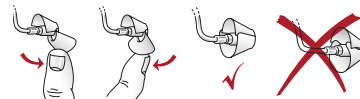
1. Push the new dome on to the thin tube.
2. Make sure that the new dome is properly and securely maintained.



ReSound tulip domes

Tulip domes consist of two “petals”. It is important that the largest petal is the outermost petal. To ensure this:

1. Push the largest petal away from the thin tube using a finger. This bends the petal forward.
2. Then push the largest “petal” back, and it will be placed on top of the smaller petal.



Connecting/disconnecting direct audio boot or integrated FM

Connecting audio boot and integrated FM

1. Align the tip of the audio boot or integrated FM boot with designated groove (F).
2. Once in place, move the boot in the direction of the battery door.
3. Gently click the boot onto the hearing instrument.

Disconnecting audio boot and integrated FM

1. Press and hold the button on the front side of the audio boot. For an FM boot, slide the latch downward with your finger nail.
2. Gently remove the boot from the hearing instrument.



Direct Audio



Integrated FM



Beep/tone indicators

BEEP/TONE	INDICATION	ACTION REQUIRED
Ding, ding, ding, dong	Low battery	Change battery
Ding (5 or 10)	Hearing aid is starting up	After dings cease, hearing aid is turned on
Ding-ding, ding-ding, etc.	Hearing aid is in flight mode	Use in flight mode if desired, or open-close battery door to exit flight mode
Ripple tone	Hearing aid is in streaming mode	Use with wireless accessory or press multi-function button to exit streaming mode

View ReSound’s hearing aid tutorial videos at youtube.com/resoundus.

Troubleshooting

SYMPTOM	CAUSE	POSSIBLE REMEDY
No sound	Battery door not closed Dead battery Battery door will not close Blocked earmold or tube	Turn on by closing the battery door (D) Replace battery Insert battery properly Clean earmold or tube (G)
Not loud enough	Blocked earmold or dome Change in hearing, volume too low Excessive ear wax	Clean earmold, replace dome (H) Consult your hearing care professional Clean dome (H) or earmold/consult your hearing care professional
Excessive whistling/feedback	Incorrect earmold placement Incorrect dome placement Excessive ear wax If none of the above	Re-insert earmold carefully Re-insert dome (H) Clean dome (H) or earmold/consult your hearing care professional Consult your hearing care professional
Wireless does not work	Device may be in flight mode	Open and close the battery door (D) once. Wireless operation will reactivate ten seconds later.

If there are any other problems not mentioned in this guide, please contact ReSound or your hearing care professional.

Notes
