



## Quick guide ReSound Key 88

GN Making Life Sound Better

### My hearing aid information

**Product:** ReSound Key

**Model:** 88H

**Serial number (R):**  
\_\_\_\_\_

**Serial number (L):**  
\_\_\_\_\_

**Battery size:** 13

### Program button (A):

ACTION	RESULT
SHORT push	Program change
LONG push	Activate streaming (if enabled by professional)

### Volume control (C):

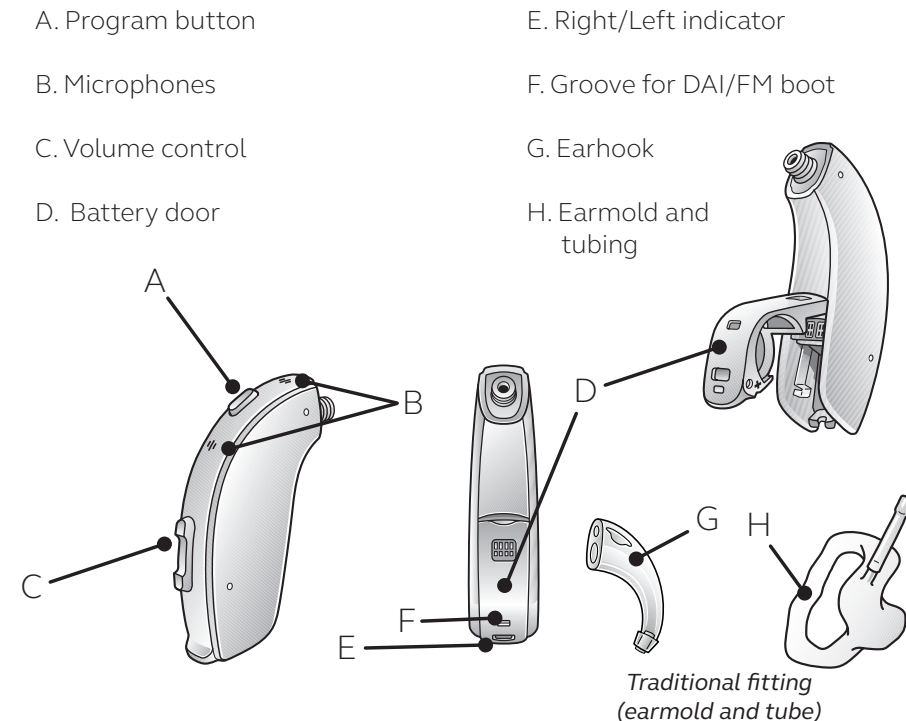
ACTION	RESULT
Press UP	Volume increases
Press DOWN	Volume decreases
Long Press DOWN	Minimum volume OR Stand-by mode (if enabled by professional)

### Programs:

(if set up by your hearing care professional)

PROGRAM	WHEN TO USE	BEEPS
1		1
2		2
3		3
4		4

### Get to know your hearing aid

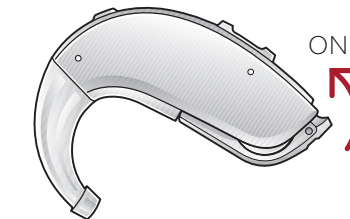


View ReSound's hearing aid tutorial videos at [youtube.com/resoundus](https://youtube.com/resoundus).

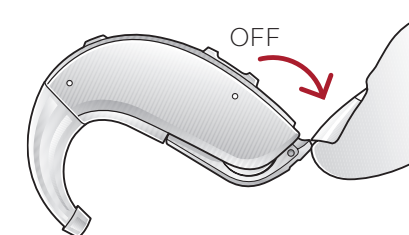
### What you need to know

#### Getting Started: On/Off function

**ON:** Insert battery & completely close battery door (D). Program 1 will be active.



**OFF:** Open the battery door (D). Use fingertip to pull it all the way.



### Inserting/Replacing the battery:

1. Open the battery door (D) completely by using your fingertip.
2. Remove protective sticker from battery and wait two minutes before inserting the battery into the hearing aid to allow full activation of the battery.
3. Insert the new battery with the positive side (flat side) in the correct position, as shown.
4. Gently close the battery door. If it doesn't close easily, check to see if the battery is upside down.

**Flight mode:** (if enabled by your hearing care professional)

Some airlines prohibit the use of wireless hearing aids (RF transmitters) onboard. If required by your airline, enable flight mode:

**Disable wireless operation** by opening and closing the battery door (D) three times within ten seconds (open-close, open-close, open-close). Your instruments will now be in flight mode.

The hearing aids must function in flight mode for ten seconds before wireless operation can be re-enabled.

**To re-enable wireless operation,** open and close the battery door one time and wait thirty seconds before opening the battery door again to avoid accidentally entering flight mode again.

### For more information

**Refer to the user guide included in your hearing aid box.**

**Your hearing care professional can be reached at:**  
\_\_\_\_\_  
\_\_\_\_\_  
\_\_\_\_\_

View ReSound hearing aid tutorial videos at [youtube.com/resoundus](https://youtube.com/resoundus).

**Manufacturer according to FDA**

**ReSound North America**  
8001 E. Bloomington Fwy  
Bloomington, MN 55420  
1.888.735.4327  
[resound.com](https://resound.com)

**ReSound Government Services**  
8001 E. Bloomington Fwy  
Bloomington, MN 55420  
1.800.392.9932  
[www.resound.com/veterans](https://www.resound.com/veterans)



401611011 Rev A 2020.12

