



PRODUCTION INKJET PRODUCT GUIDE

EVERYDAY DEPENDABILITY AND TRUSTED PRINTABILITY

Flawless performance. Outstanding results. As your business evolves to embrace new technology and new customers, depend on Domtar to adapt alongside you with quality products that deliver trouble-free performance.

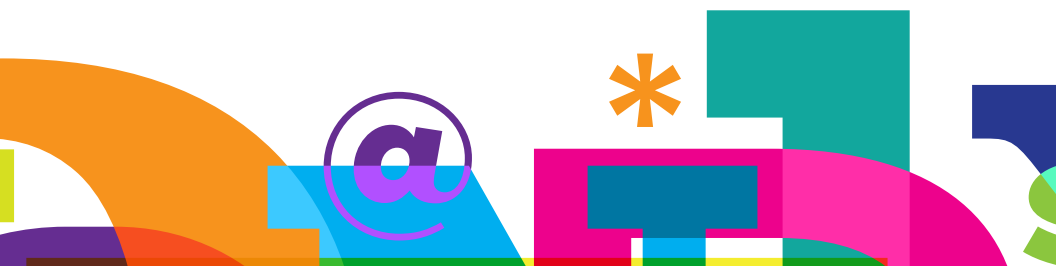
Trust the many options from Domtar Paper to help take your print technology investment to the next level. From treated production inkjet to a variety of untreated options with the strength to consistently perform on today's high-speed production inkjet equipment—our complete line offers the optimal choice for every project, priority and budget. Expect trouble-free performance, helpful expertise and unsurpassed availability.



DOMTAR PERFORMANCE COMMITMENT

Domtar's digital and inkjet products are designed and recommended for digital and inkjet production presses, desktop printers (laser and inkjet) and copiers within the limitations specified by the original equipment manufacturer.

We partner with leading OEMs to print test and certify our inkjet products as fit for use on a wide variety of equipment. Domtar's products are optimized for runnability on press and through post-processing. Our surface treatment will enhance print quality compared to untreated stocks when using pigment or dye inks. As always, Domtar stands behind our commitment and our products.



LynxJET®

The Lynx® brand is known for superior performance and dynamic results, and LynxJET treated inkjet papers hold true to this promise. With a wealth of features and a reputation for flawless runnability, LynxJET is engineered to excel, both on press and during post-processing.

LynxJET® Specifications

BASIS WEIGHT	GSM	BRIGHTNESS	OPACITY	SMOOTHNESS	CALIPER	Length Target (+/-200 linear feet) 40"/3"	Length Target (+/-200 linear feet) 50"/3"
45/18	67	96	87	150	3.6	30,000	47,000
50/20	74	96	93	140	3.8	28,400	44,600
60/24	89	96	94.5	140	4.3	25,200	39,700
70/28	104	96	96	140	5.0	21,550	33,800
80/32	118	96	96	130	6.1		
100/40	148	96	97	130	7.7		

LynxJET® Stocking - Sheets

BASIS WEIGHT	SIZE	M WGT	SHEETS/PKG/CTN	CTN/PALLET	ITEM CODE #
50/20	8.5x11	9.84	500/5000	40	600947
	11x17	19.68	500/2500	40	600948
	12x18	22.74	500/1500	32	600949
60/24	8.5x11	11.81	500/5000	32	600950
	11x17	23.62	500/2500	32	600951
	12x18	27.28	400/1200	32	600952
70/28	8.5x11	13.78	500/4000	40	600953
	11x17	27.56	500/2000	40	600954
	12x18	31.83	500/1000	32	600955



LynxJET® Stocking - Rolls

BASIS WEIGHT	WIDTH	DIAMETER	CORE	ITEM CODE #
50/20	18"	50"	3"	607400
60/24	18"	50"	3"	607401
70/28	18"	50"	3"	607402
80/32	18"	50"	3"	607403

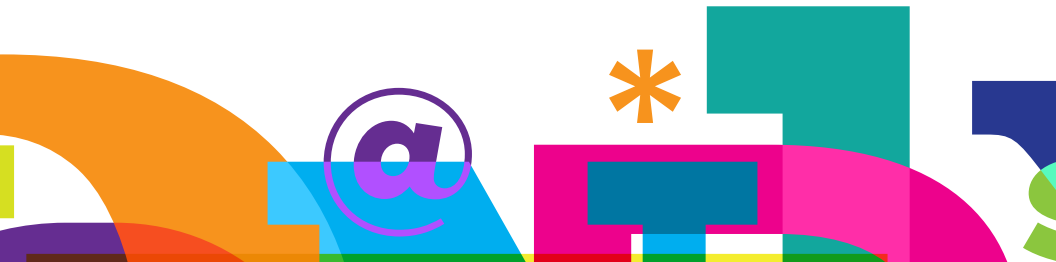
All rolls 20" and below are wrapped 2 per package unless otherwise noted.

Product Features

- 96 brightness with true white shade
- Excellent opacity with minimal show-through
- Special surface treatment enhances print quality and improves optical density for pigment inks
- Available in rolls and sheets

Common Uses

- Direct Mail
- Transactional Documents
- Transactional Statements
- Commercial Print Jobs
- Catalogs
- Brochures
- Textbooks
- Bulletins





LynxJET® Premium Card

When your inkjet production jobs require dynamic results at a more substantial weight, this robust product provides the dependability and performance you've come to expect from the LynxJET brand. With a high stiffness and tactile feel, LynxJET Premium Card is the perfect choice for printing inkjet business reply cards and postcards that customers can't ignore. LynxJET Premium Card 7 pt. and 9 pt. are made to caliper and comply with U.S. Postal Service regulations.

LynxJET® Premium Card Specifications

BASIS WEIGHT 25x38	GSM	BRIGHTNESS	OPACITY	SMOOTHNESS	CALIPER
7 pt. (84 lb.)	125	96	97	260	7.4
9 pt. (99 lb.)	147	96	97	260	9.3

LynxJET® Premium Card Stocking

BASIS WEIGHT 25 X 38	SIZE	M WGT	SHEETS/PKG/CTN	CTN/PALLET	ITEM CODE #
7 pt.	8.5x11	16.61	250/2500	32	5275
	11x17	33.23	250/1250	32	5276
	12x18	38.38	250/750	32	5267
9 pt.	8.5x11	19.49	500/2000	40	5277
	11x17	38.97	250/1000	40	5278
	12x18	45.02	200/600	32	5268

Product Features

- 96 brightness with true white shade
- Excellent opacity with minimal show-through
- Special surface treatment enhances print quality and improves optical density for pigment inks
- Unique stiffness characteristics to support post-converting process
- Available in rolls and sheets

Common Uses

- Direct Mail
- Transactional Documents
- Transactional Statements
- Postcards
- Business Reply Card



LynxJET® Dye

When you need greater lift in density and depth of color when printing with dye inks, LynxJET Dye is your treated inkjet paper of choice. Specifically engineered for improved print quality on dye-based systems, this sheet features a unique formulation that decreases color-to-color bleeding and smearing for clear, crisp images and sharp text.

LynxJET® Dye Specifications

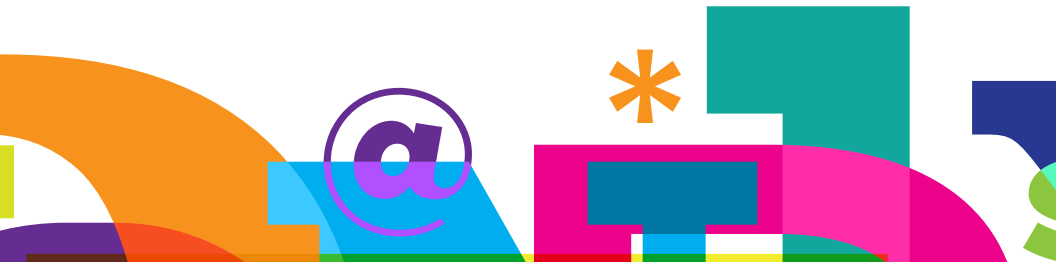
BASIS WEIGHT 17x22	GSM	BRIGHTNESS	OPACITY	SMOOTHNESS	CALIPER	Length Target (+/-200 linear feet) 40"/3"	Length Target (+/-200 linear feet) 50"/3"
20	75	96	92	130	3.8	26,700	41,500
24	90	96	94	130	4.6	22,600	35,000
28	105	96	96	130	5.2	19,900	30,800

Product Features

- 96 brightness with true white shade
- Excellent opacity with minimal show-through
- Designed for today's most advanced dye high-speed inkjet systems
- Surface treatment specifically engineered for improved print quality
- Consistent runnability on press and in post-processing equipment for inserting, punching and folding
- Available in rolls

Common Uses

- Direct Mail
- Transactional Documents
- Transactional Statements





HuskyJET®

The Husky® name is known for hardworking performance, and HuskyJET takes this legacy to the next level. Bring splashes of color to brochures, textbooks and on-demand books. Balance trouble-free printing with flawless post-processing for transactional end uses. No matter what you're printing, HuskyJET brings strength, reliability and superior runnability to every job.

HuskyJET® Specifications

BASIS WEIGHT	GSM	BRIGHTNESS	OPACITY	SMOOTHNESS	CALIPER	Length Target (+/-200 linear feet) 40"/3"	Length Target (+/-200 linear feet) 50"/3"
50/20	74	94	89	150	4.0	28,500	43,700
60/24	89	94	93	150	4.6	24,700	37,800
70/28	104	94	95	150	5.3	21,100	32,000

HuskyJET® Stocking - Sheets

BASIS WEIGHT	SIZE	M WGT	SHEETS/PKG/CTN	CTN/PALLET	ITEM CODE #
50/20	8.5x11	9.84	500/5000	40	5868
	11x17	19.68	500/2500	40	5869
	12x18	22.74	500/1500	32	5870
60/24	8.5x11	11.81	500/5000	32	5871
	11x17	23.62	500/2500	32	5872
	12x18	27.28	400/1200	32	5873
70/28	8.5x11	13.78	500/4000	40	5876
	11x17	27.56	500/2000	40	5877
	12x18	31.83	500/1000	32	5879



HuskyJET® Stocking - Rolls

BASIS WEIGHT	WIDTH	DIAMETER	CORE	ITEM CODE #
50/20	18"	50"	3"	5859
60/24	18"	50"	3"	5860
70/28	18"	50"	3"	5867

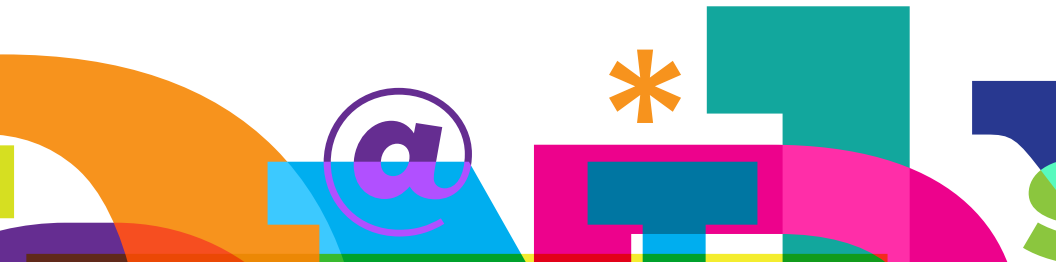
All rolls 20" and below are wrapped 2 per package unless otherwise noted.

Product Features

- 94 brightness with a pleasing blue-white shade
- Guaranteed for OCR/MICR applications
- Excellent opacity for minimal show-through
- Special surface treatment enhances print quality and improves optical density for pigment inks
- Available in rolls and sheets

Common Uses

- Transactional Statements
- Direct Mail
- Textbooks
- On-Demand Books
- Manuals
- Brochures



HuskyJET® 7pt. Card

Generate a response and deliver a message that pulls through under any circumstances with HuskyJET 7pt. Card. This product is also caliper-crafted to comply with U.S. Postal Service regulations, so it's ready to mail — and bring in results.

HuskyJET® 7pt. Card Specifications

BASIS WEIGHT 25x38	GSM	BRIGHTNESS	OPACITY	SMOOTHNESS	CALIPER
7 pt. (79 lb.)	117	92	94	330	7.4

HuskyJET® 7pt. Card Stocking - Rolls

BASIS WEIGHT	WIDTH	DIAMETER	CORE	ITEM CODE #
7 pt. (79 lb.)	18"	50"	3"	5811

All rolls 20" and below are wrapped 2 per package unless otherwise noted.

Product Features

- 92 brightness with a pleasing blue-white shade
- Excellent opacity for minimal show-through
- Suitable for all of your printing and 7pt. mailing requirements
- Special surface treatment enhances print quality and improves optical density for pigment inks
- Available in rolls

Common Uses

- Direct Mail
- Business Reply Card
- Transactional End Uses





Lynx® Digital

Specially designed for high performance output on the most popular digital and production inkjet printers, Lynx Digital proves you don't have to give up creativity, control or performance to go digital.

Lynx Digital is a dependable, top-performing solution for a variety of projects. Whether printing short run digital jobs or high volume transactional statements that require sharp text and maximum efficiency, trust this untreated paper to deliver time and time again.

Lynx® Digital Text Specifications

BASIS WEIGHT	GSM	BRIGHTNESS	OPACITY	SMOOTHNESS	CALIPER	Length Target (+/-200 linear feet) 40"/3"	Length Target (+/-200 linear feet) 50"/3"
50/20	74	96	93	140	3.8	30,300	46,600
60/24	89	96	95	140	4.6	24,200	36,500
70/28	104	96	96	140	5.2	20,700	32,500
80/32	118	96	96	130	6.1		
100/40	148	96	97	130	7.7		

Lynx® Digital Cover Specifications

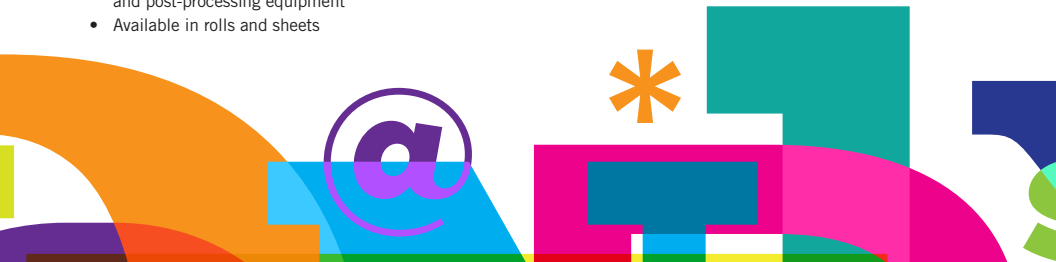
BASIS WEIGHT 20x26	GSM	BRIGHTNESS	OPACITY	SMOOTHNESS	CALIPER
65	176	96	98	130	8.8
80	216	96	99	130	11.0
100	270	96	99	130	14.1
120	325	96	99	130	16.0

Product Features

- 96 brightness for sharp contrast
- Pleasing true white shade with smooth finish
- Excellent opacity for minimal show-through
- Smooth uniform surface for better resolution
- Consistent runnability on both digital printing and post-processing equipment
- Available in rolls and sheets

Common Uses

- Catalogs
- Brochures
- Flyers
- Direct Mail
- Transactional Documents



Lynx® Digital Satin

This untreated product features excellent formation, a super smooth finish and 96 brightness. The uniform print surface and low caliper make Lynx Digital Satin a great value for transactional jobs that require sharp text and pops of color. Expect sharp, crisp images and text on a variety of digital web equipment including systems with in-line bonding capability.

Lynx® Digital Satin Specifications

BASIS WEIGHT 17x22	GSM	BRIGHTNESS	OPACITY	SMOOTHNESS	CALIPER	Length Target (+/-200 linear feet) 40"/3"	Length Target (+/-200 linear feet) 50"/3"
24	90	96	92	70	4.0	27,700	43,500
28	105	96	94	70	4.6	23,600	37,000

Product Features

- Unique super smooth uncoated paper
- 96 brightness with a pleasing true white shade
- Uniform print surface form sharp, crisp images
- Available in rolls

Common Uses

- Direct Mail
- Transactional Documents



Domtar Postal Advantage®

Domtar Postal Advantage is a lighter weight paper designed to reduce mailing costs. It is manufactured to handle all of the demands of high-speed imaging, processing and inserting equipment. Items are manufactured to linear footage with a tolerance of +/- 200 linear feet.

Domtar Postal Advantage® Specifications

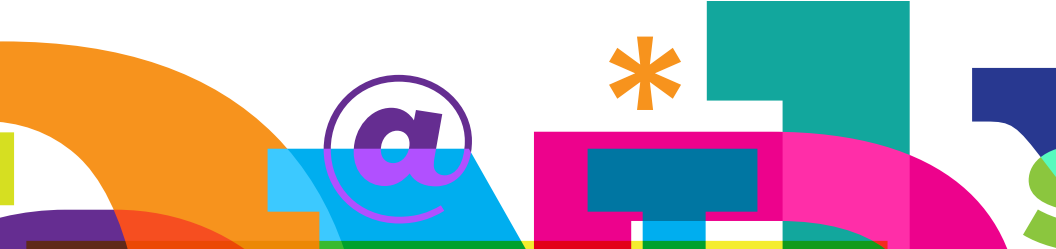
BASIS WEIGHT 17x22	GSM	BRIGHTNESS	OPACITY	SMOOTHNESS	CALIPER	Length Target (+/-200 linear feet) 40"/3"	Length Target (+/-200 linear feet) 50"/3"
18	68	92	84.5	160	3.65	31,000	47,100
21	79	92	89	150	4.2	27,000	41,800

Product Features

- Manufactured under alkaline (acid-free) conditions for increased longevity and performance
- Available in rolls

Common Uses

- Direct Mail
- Transactional Documents





Untreated
Production InkJet

Domtar Laser Forms Bond

Domtar Laser Forms Bond is a top quality, laser guaranteed product that can withstand the rigors of modern converting and printing equipment. It offers superb fiber alignment while providing consistent printability and is guaranteed for OCR/MICR applications.

Domtar Laser Forms Bond Specifications

BASIS WEIGHT 17x22	GSM	BRIGHTNESS	OPACITY	SMOOTHNESS	CALIPER	Length Target (+/-200 linear feet) 40"/3"	Length Target (+/-200 linear feet) 50"/3"
20	75	92	89	150	4.0	28,500	43,700
24	90	92	93	150	4.6	24,700	37,800
28	105	92	95	150	5.4	21,100	32,000

Product Features

- Available in 20, 24 and 28 lb. basis weights
- Guaranteed for OCR/MICR applications
- Available in rolls

Common Uses

- Business checks
- Direct Mail
- Transactional Documents

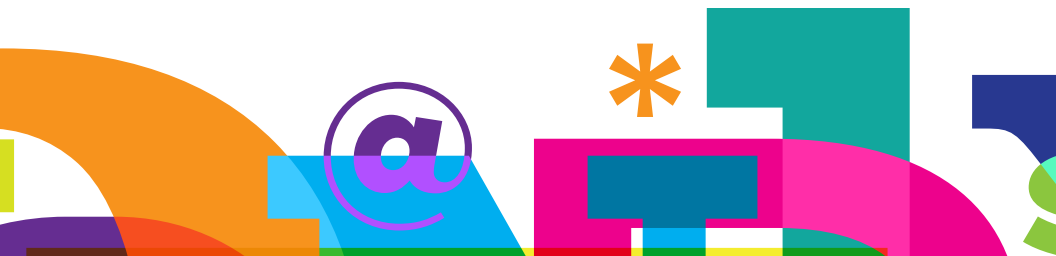




As your partner in paper, Domtar has you covered with a broad assortment of inkjet papers for every project, priority and budget. Our LynxJET® and HuskyJET® treated production inkjet papers deliver trouble-free performance, dynamic results and easy post-processing. From time-sensitive monthly statements to memorable mailbox moments, your brand works hard to maintain its reputation. So do our papers.

Request the latest treated inkjet promos from Domtar Paper at:

PAPER.DOMTAR.COM



PAPER CONNECTS US.

It brings moments, ideas and dreams to life, capturing them in a vibrant and tactile way. Our paper gives shape, provides security, stakes a claim and always has a story to tell. As master makers and purveyors of fine uncoated communication and specialty papers, collaboration and discovery in all things paper is the soul of what we do. Domtar Paper is proud to play an important role in all the ways paper is part of creating everyday connections.



PAPER.DOMTAR.COM

To learn more about Domtar Paper, please visit paper.domtar.com or find us on Facebook, Instagram, Twitter or LinkedIn.

