



BRACKETKIT

BBB TOOLBOX /BTL-95

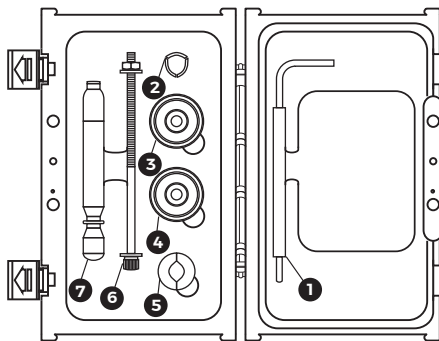
BBB CYCLING.COM
ROOSEVELTSTRAAT 46, 2321 BM
LEIDEN, THE NETHERLANDS

EN MANUAL / DE HANDBUCH / FR MANUEL / NL HANDLEIDING / ES MANUAL / PT MANUAL /
IT MANUALE / HU HASZNÁLATI UTASÍTÁS / PL PODRĘCZNIK / CZ UŽIVATELSKÁ PŘÍRUČKA
/ JP 使用説明書 / RU РУКОВОДСТВО ПОЛЬЗОВАТЕЛЯ / SK MANUÁL / NO HÅNDBOK

COMPONENTS:

- 1 BTL-13 Hexagon, 8mm
- 2 Collet, 24mm
- 3 Bearing guide A
- 4 Bearing guide B
- 5 Collet, 30mm
- 6 Installation pin
- 7 Extraction pin

FIND YOUR TRANSLATION
ON BBBCYCLING.COM

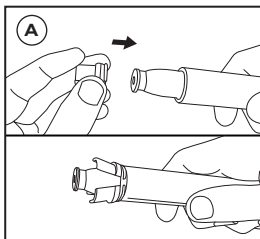


WARNING

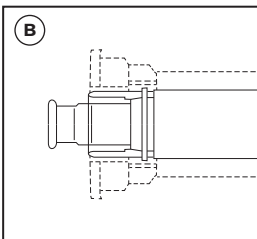
Sold only by professional bicycle dealers.
For proper installation, ask your BBB dealer.
Not following the instructions in this manual may
cause damage to the product not covered under
warranty, damage to the bicycle, or cause an
accident resulting in injury or death.

ENGLISH

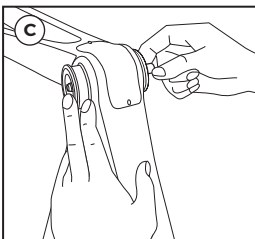
EXTRACTION: 24MM SPINDLE



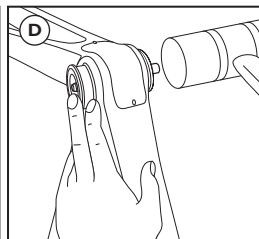
Place the 24mm collet 2 on the narrowest side of the extraction pin 7.



Push the extraction pin 7 through the bottom bracket.

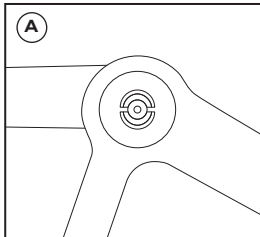


Use your fingers to prevent the collet 2 from coming out of the bottom bracket. Make sure the extraction pin 7 and collet are placed correctly.

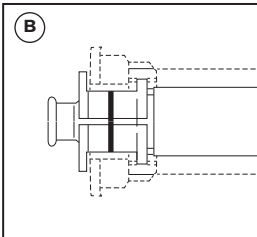


Use a hammer to extract the bottom bracket. You should hammer the convex side of the extraction pin 7.

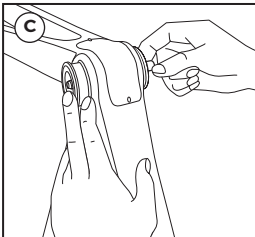
EXTRACTION: 30MM SPINDLE



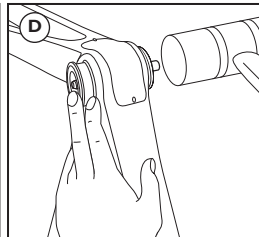
Place the 30mm collet 5 on the bearings inside the bottom bracket. The complete flat side should be on the outside.



Push the extraction pin 7 through the bottom bracket and collet 5.

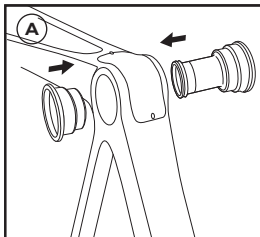


Make sure the collet 5 falls over the bottom bracket and the extraction pin 7 is placed correctly.

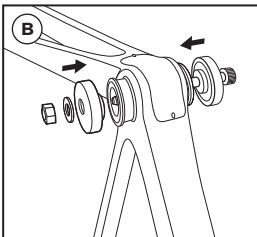


Use a hammer to extract the bottom bracket. You should hammer the convex side of the extraction pin 7. Use your fingers to prevent the collet 5 from coming out of the bottom bracket.

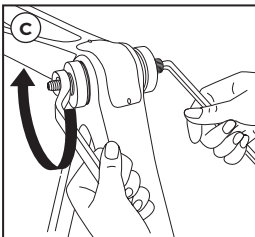
INSTALLATION



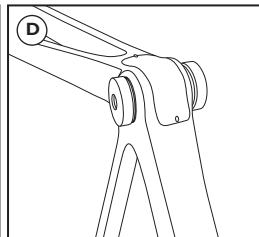
Insert the bottom bracket.



Insert the installation pin 6 and bearing guides 3 or 4. Be sure to use the correct bearing guide diameter.



Use a wrench and the BTL-13 Hexagon 8mm hex key 1 to press fit the bottom bracket. The bottom bracket should stay parallel to the frame.



Make sure there's no space between the frame and bottom bracket.