



BOTTOMBEAR

BBB BOTTOM BRACKET BEARINGS BBB /BB0-26

BBB CYCLING.COM
ROOSEVELTSTRAAT 46, 2321 BM
LEIDEN, THE NETHERLANDS

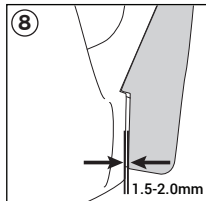
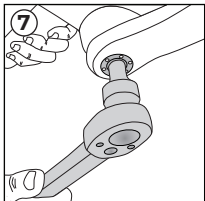
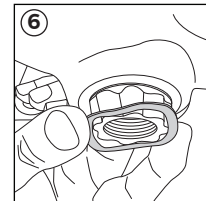
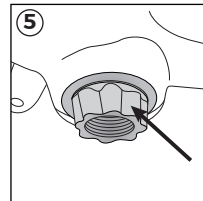
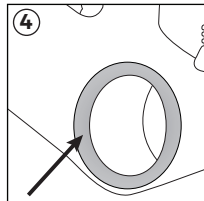
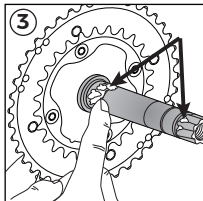
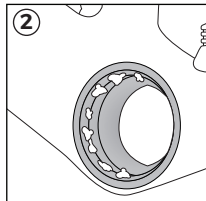
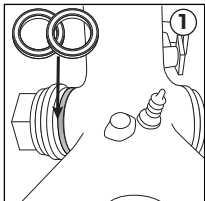
EN MANUAL / DE HANDBUCH / FR MANUEL / NL HANDLEIDING / ES MANUAL / PT MANUAL /
IT MANUALE / HU HASZNÁLATI UTASÍTÁS / PL PODRĘCZNIK / CZ UŽIVATELSKÁ PŘÍRUČKA
/ JP 使用説明書 / RU РУКОВОДСТВО ПОЛЬЗОВАТЕЛЯ / SK MANUÁL / NO HÅNDBOK

CRANKSET INSTALLATION:

Before installing bearings, use a reaming tool to ensure that the bottom bracket (BB) shell is clean and free of metal chips, dirt and excess paint. Inspect the BB shell for ID ovalization or anything that could cause bearing mis-alignment.

1. Install bearings using the BB90 bearing installation press (1) and the adjustable wrench (2). Press the bearings (2) into the BB shell until they are butted against the circlip. **Note:** Right and Left bearings are the same.
2. Apply a layer of grease on the outer edge of the bearing (2) to reduce friction between the bearing and the bearing shield, as well as improve protection from water and other contaminants.
3. Apply grease to the machined surfaces of the spindle that will contact the bearings after crank installation (as shown in the illustration).
4. Install the bearing seal (3) on the right bearing, with the flange (machined grooves on alloy covers) toward the bearing.
5. Insert the right crank arm and spindle through the both BB90 bearings. Position the non-drive side bearing seal (3) over the left bearings with flange inward, toward the bearings. (as shown in photo)
6. Position the wave spring washer (4) on the spindle on non-drive side.
7. The self-extracting crank bolt assembly (5) and preload nut are pre-installed from factory. Install the left crank by engaging the spindle hole of the crank to the spindle. Thread the self-extracting crank bolt into the spindle using a torque wrench with 10mm Allen key (3) Check your crank set manual for the appropriate torque. Always use a calibrated torque wrench to tighten the crank bolt. Stripping or breakage due to installing without a torque wrench is NOT covered under manufacturing warranty.

Caution: Do NOT tighten crank bolt over appropriate torque. Do NOT completely flatten the wave spring washer (4). Clearance between non-drive arm and bearing seal (4) should be 1.5-2.0mm. If the clearance is not within 1.5-2.0mm after applying correct torque. Do NOT tighten the crank bolt further. Recheck installation procedure and order of assembled parts. Ensure correct torque is used.



FIND YOUR TRANSLATION
ON BBBCYCLING.COM



WARNING

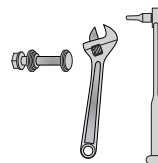
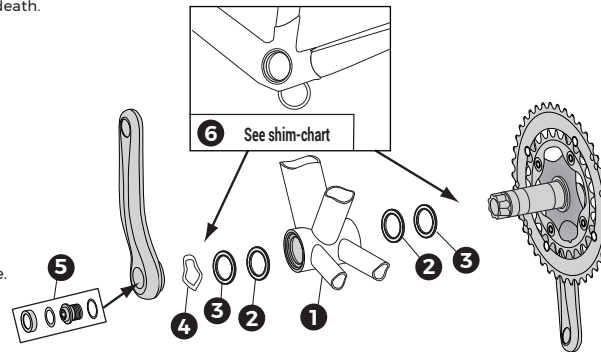
Sold only by professional bicycle dealers. For proper installation, ask your BBB dealer. Not following the instructions in this manual may cause damage to the product not covered under warranty, damage to the bicycle, or cause an accident resulting in injury or death.

COMPONENTS:

- | | |
|---------------------------|--|
| 1 Bottom bracket shell | 5 Self-extracting crank bolt assembly: |
| 2 BB90 bearings (x2) | - Washer (x1) |
| 3 Bearing seal (x2) | - M25 BB90 crank bolt (x1) |
| 4 Wave spring washer (x1) | - Washer (x1) |
| | - M18 retaining nut (x1) |

- 6 BB90 shims, see the chart below for the appropriate shims

	BB WIDTH	NON-DRIVE SIDE	DRIVE SIDE
ROAD	90	X	X
MTB	90	MW221	MW220
	95	X	MW049



Tools necessary for BB90 crankset assembly:

- (1) BB90 bearing installation press
- (2) Adjustable wrench
- (3) Torque wrench with 10mm Allen key