

3

BOTTOMBEAR BB30

BBB BOTTOM BRACKET /BB0-19

BBB CYCLING.COM
ROOSEVELTSTRAAT 46, 2321 BM
LEIDEN, THE NETHERLANDS

EN MANUAL / DE HANDBUCH / FR MANUEL / NL HANDLEIDING / ES MANUAL / PT MANUAL / IT MANUALE / HU HASZNÁLATI UTASÍTÁS / PL PODRĘCZNIK / CZ UŽIVATELSKÁ PŘÍRUČKA / JP 使用説明書 / RU РУКОВОДСТВО ПОЛЬЗОВАТЕЛЯ / SK MANUÁL / NO HÅNDBOK

COMPONENTS:

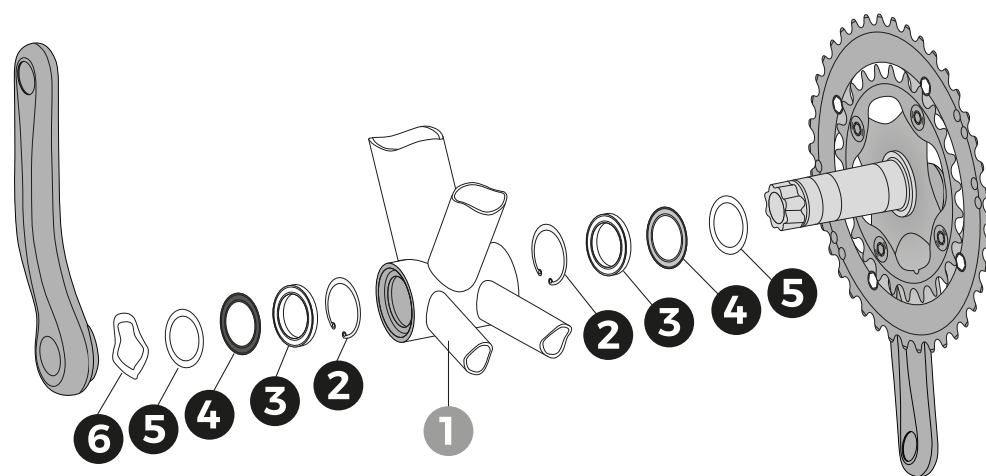
- ① Bottom bracket shell
- ② Circlip (x2)
- ③ BB30 bearings (x2)
- ④ Bearing shield (x2)
- ⑤ Spacers (2.5mm x2)
- ⑥ Wave spring washer (x1)

COMPATIBILITY

- BB30 (68/73 x Ø42mm) + Ø30mm spindle cranksets

RECOMMENDED TOOLS

- BTL-95 BracketKit
- Adjustable wrench
- Circlip pliers
- Torque wrench
- Grease



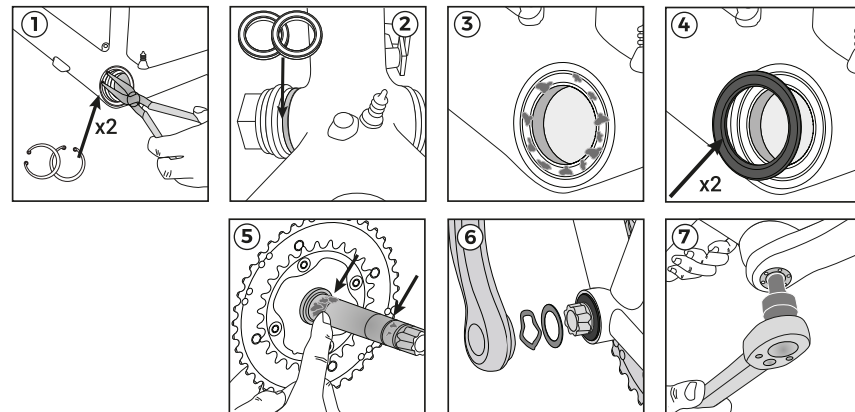
IMPORTANT:

- Before installing ensure the BB shell ① is clean and free of metal chips, dirt and excess paint.
- Inspect the BB shell ① for width, inner diameter, ovalization or anything that could cause bearing mis-alignment.
- Always use a calibrated torque wrench to tighten crank bolts.
- BBB Cycling cannot guarantee compatibility with you frame and/or crank combination.
- consult your manufacturer for compatibility.
- BBB Cycling cannot be held responsible for any damage occurred during assembly.
- The wave spring washer should not be completely compressed for proper use.
- Wear eye protection while installing or removing circlips to prevent injury.

INSTALLATION:

1. Use circlip pliers, collapse the circlip ② and insert into machined circlip groove in each side of the BB shell ①.
2. Install bearings using the BTL-95 BracketKit. Press the bearings ③ into the BB shell until they are butted against the circlip.
3. Apply a layer of grease on the outer edge of the bearing ③.
4. Install the bearing seals ④ on the bearings, with the alloy frame towards the bearing.
5. Apply grease to the surfaces of the spindle that will contact the bearings.
6. Add spacers ⑤ as noted below. If binding occurs or the crankset gets loose over time, try removing spacers or use the Wave spring washer ⑥ to add preload on the bearings and crankset.
7. Install crankset following manufacturers specifications.

CRANK	BB SHELL WIDTH	NON-DRIVE SIDE SPACER	DRIVE SIDE SPACER
Road	68	0 mm	0 mm
MTB	68	2.5 mm	2.5 mm
MTB	73	0	0 mm



FIND YOUR TRANSLATION
ON BBB CYCLING.COM



WARNING

Sold only by professional bicycle dealers. For proper installation, ask your BBB dealer. Not following the instructions in this manual may cause damage to the product not covered under warranty, damage to the bicycle, or cause an accident resulting in injury or death.