



BOTTOMSQUARE BOTTOM AXLE

BBB CYCLING®

ROOSEVELTSTRAAT 46, 2321 BM LEIDEN
THE NETHERLANDS

BBBCYCLING.COM

EN Manual	HU Használati utasítás
DE Handbuch	PL Podręcznik
FR Manuel	CZ Uživatelská příručka
NL Handleiding	JP 使用説明書
ES Manual	RU Руководство пользователя
PT Manual	SK Manuál
IT Manuale	NO Håndbok BB0-51/52/53/54

BB SHELL

CRANKSET

INNER Ø	46MM	46MM	42MM	41MM	37MM	1,37" X 24T
WIDTH	68 - 73MM	86,5MM	68 - 73MM	86,5 - 89,5 - 92MM	90 - 95MM	86 - 73MM
TYPE	PF30	BB386 EVO	BB30	BB86 - 89,5 - 92	BB90 - 95	THREADED
BIKE	ROAD MTB	ROAD	ROAD MTB	ROAD MTB	ROAD MTB	ROAD MTB
- SHIMANO Hollowtech II - FSA Mega Exo - RACE FACE X-Type - ROTOR 3D - Agilla	BB0-01 BB0-05 + BB0-16 BB0-16	BB0-01 + BB0-17	BB0-11 BB0-15 + BB0-16 BB0-16	BB0-21 BB0-25	BB0-26	BB0-31 BB0-35
Spindle dia = 24mm						
- FSA BB30 - SRAM BB30	BB0-01 BB0-05		BB0-11 BB0-15			
Spindle dia = 30mm						
- FSA BB386 EVO		BB0-01				
Spindle dia = 30mm						

MORE BOTTOM BRACKETS

CAMPAGNOLO: Ultra Torque - BB0-41
Power Torque - BB0-42

SQUARE TAPERED JIS: 113mm - BB0-51
Shimano 115mm - BB0-52
Ritchey 118mm - BB0-53
Specialized 122.5mm - BB0-54

ISIS DRIVE: BB0-61
Bontrager (Truvativ) Truvativ
FSA

ENGLISH

WARNING

Sold only by professional bicycle dealers. For proper installation, ask your BBB dealer. Not following the instructions in this manual may cause damage to the product not covered under warranty, damage to the bicycle, or cause an accident resulting in injury or death.

INSTALLATION:

- Assure the frame's bottom bracket shell ① threads are clean and undamaged, there should be no paint or dirt present. Have your BB shell chased and faced by your bike shop for best results. Check to make sure the threads of your bottom bracket ② match the threads of the BB shell of your frame.
- Apply grease to the surfaces of the BB ② as shown in illustration A.
- Thread the prepared BB ② into the drive side (right side) of the frame until the flange bottoms against the frame shell face. Ask your frame manufacturer for the appropriate torque. See illustration B for your reference.
- Thread the prepared left BB adapter ③ into the non-driveside (left side) of the frame. The tightening direction is clockwise. Ask your frame manufacturer for the appropriate torque. See illustration C for your reference.
- Apply grease to the crankbolt threads only in order to prepare the BB for crankarm installation. When installing the crankarms do not exceed 42 Nm / 31 ft.lbf / 429 kgf.cm torque when tightening. Check your crankarm manual for exact torque specifications. See illustration D for your reference.

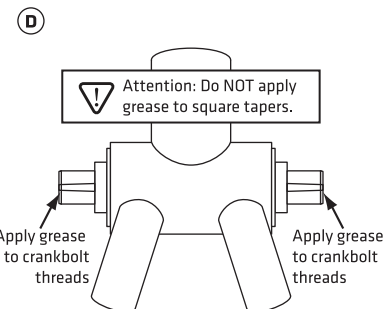
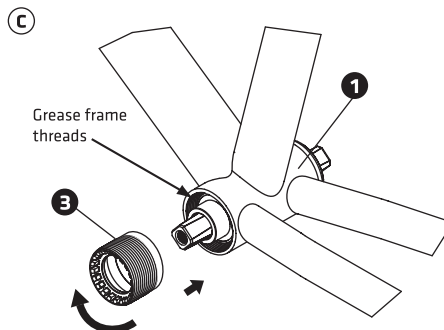
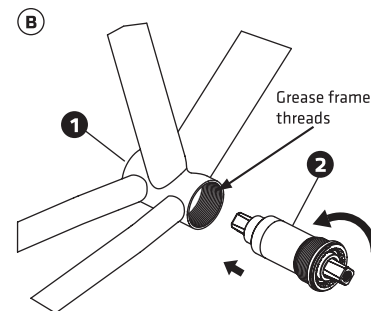
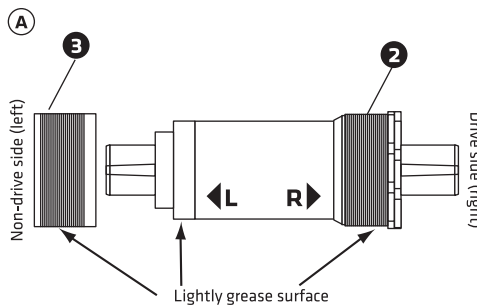
COMPONENTS:

Follow the assembly order in the illustrations:

- Bottom bracket (BB) shell
- Bottom bracket
- Left bottom bracket adapter

TOOLS:

- Bottom bracket installation tool
- Torque wrench



Find your translation on
BBBcycling.com

BBB has no responsibility for misprints or changed technical content.