



BOSCH POWER PACK INSTALLATION

JARIFA²



#RIDEBEYOND

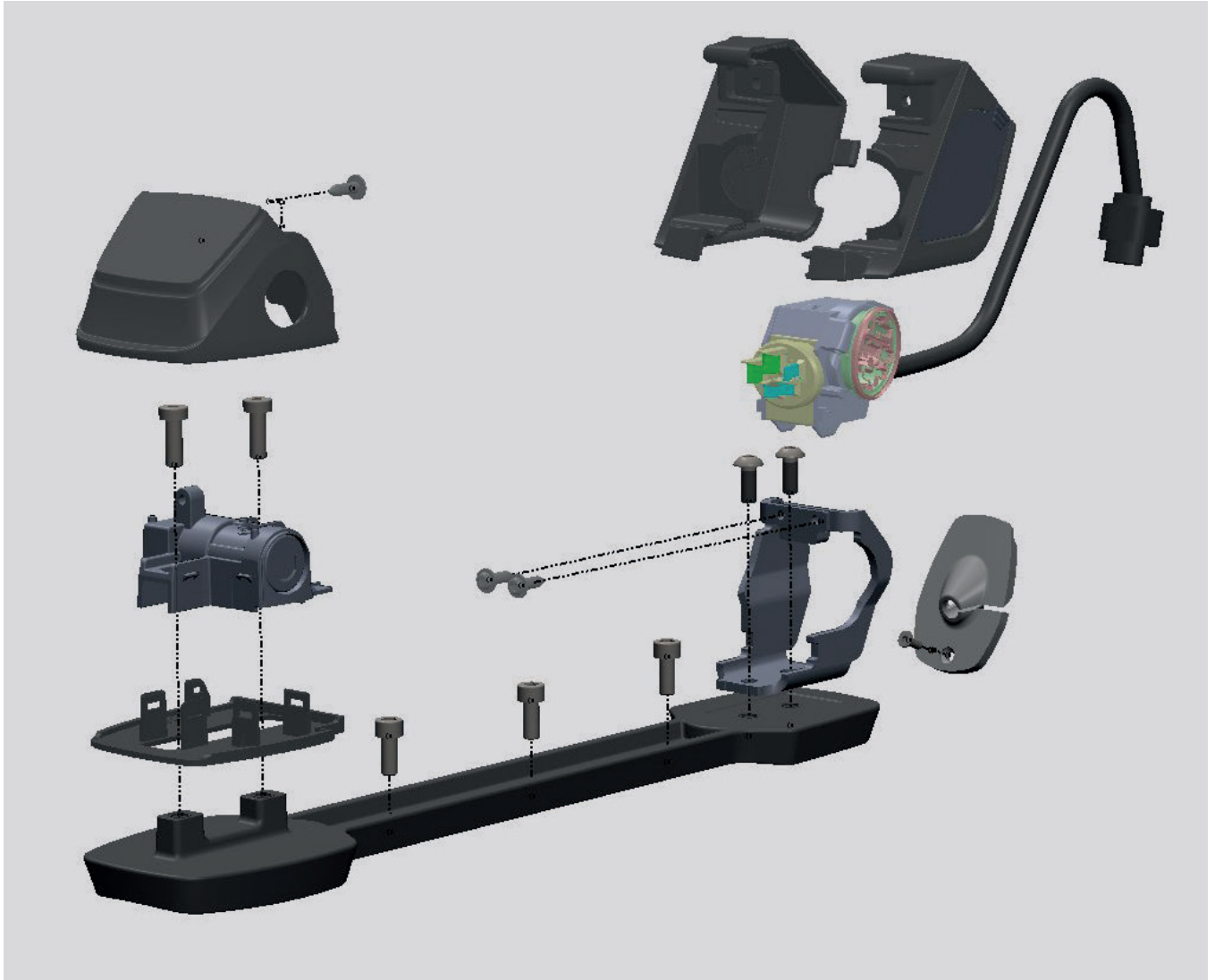
ENGINEERED IN GERMANY
SINCE 1993

SMART
PERFORMANCE
BIKES

JARIFA²

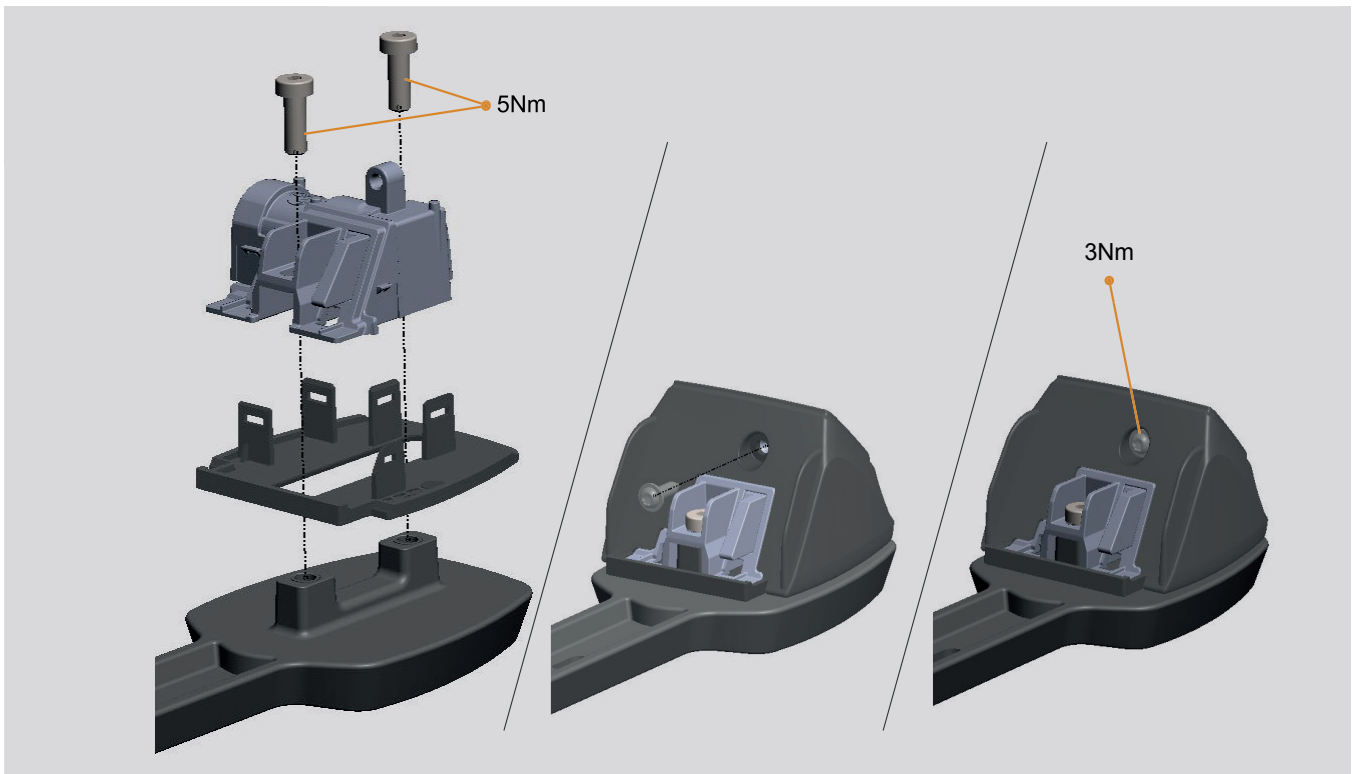
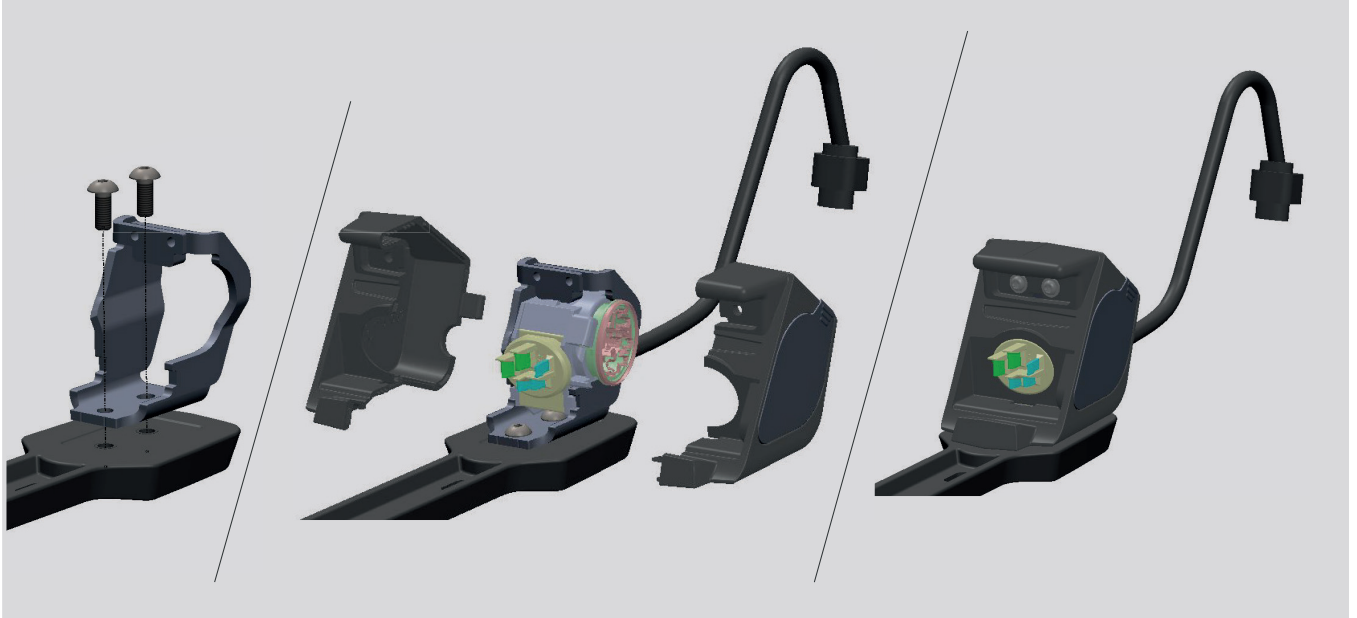
1.1	OVERVIEW	03
1.2	PRE-ASSEMBLY	04
1.3	MOTOR DISASSEMBLY	05
1.4	CHARGE PORT DISASSEMBLY	05
1.5	Y-CABLE CONNECTION	06
1.6	CABLE FRAME PLUG INSTALL	07
1.7	MOTOR ASSEMBLY	07

1.1 OVERVIEW



1.2 PRE-ASSEMBLE

Make sure to pre-assemble both brackets to the mounting rail, that way is easier to mount on to the frame. Tighten the screws to 5Nm.



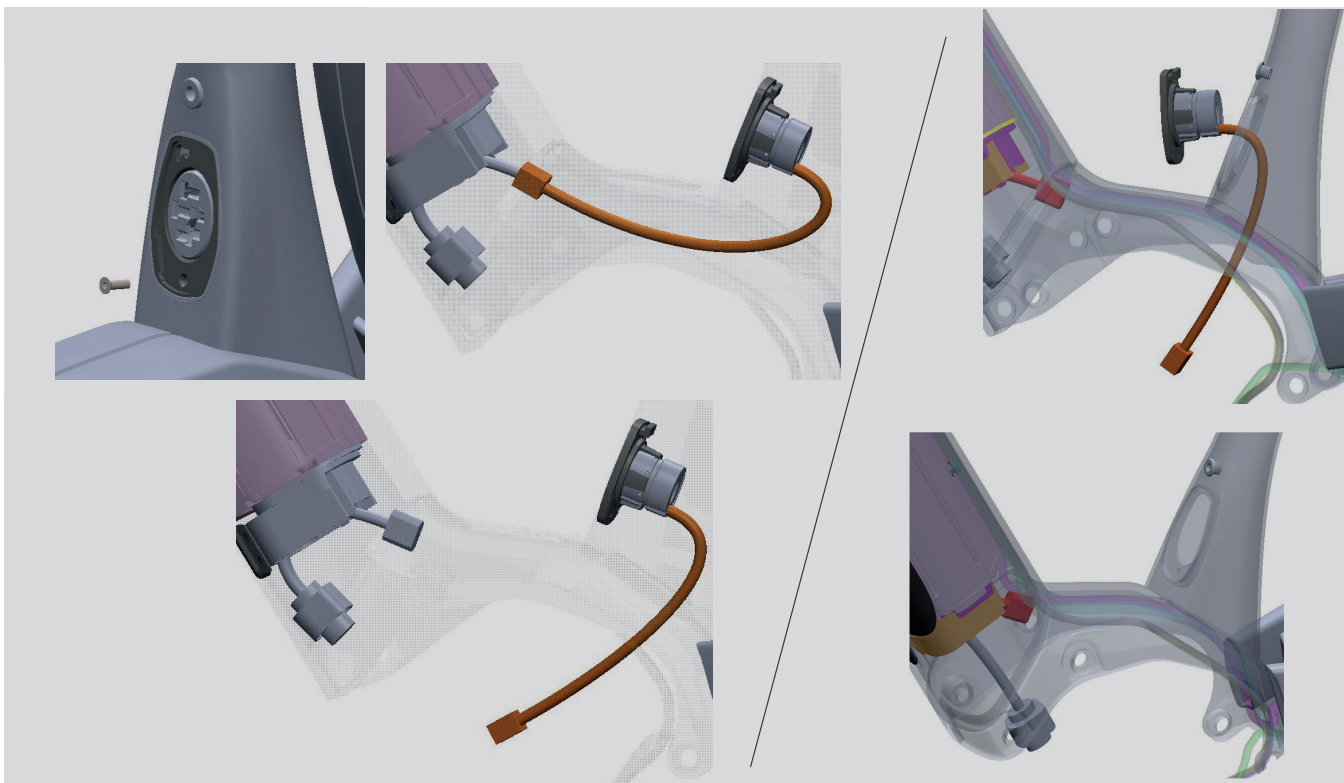
1.3 MOTOR DISASSEMBLY

Remove the cranks and the non-drive side motor cover.
Unplug all the cables and remove the motor for a better workflow.



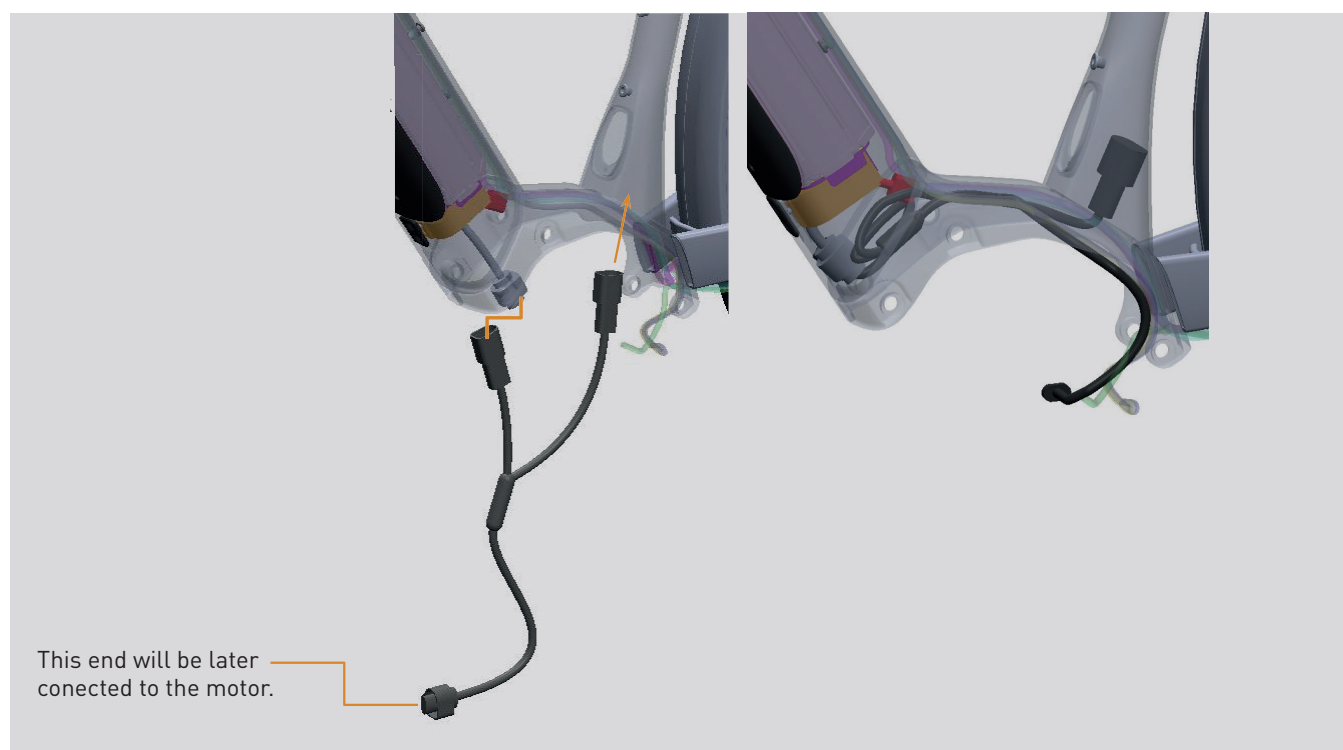
1.4 CHARGE-PORT DISASSEMBLY

Rubber lid can stay on, and then remove everything together.
Unscrew the M3 socket screw and then disconnect the Charge-Port from the battery. Then pull it out.

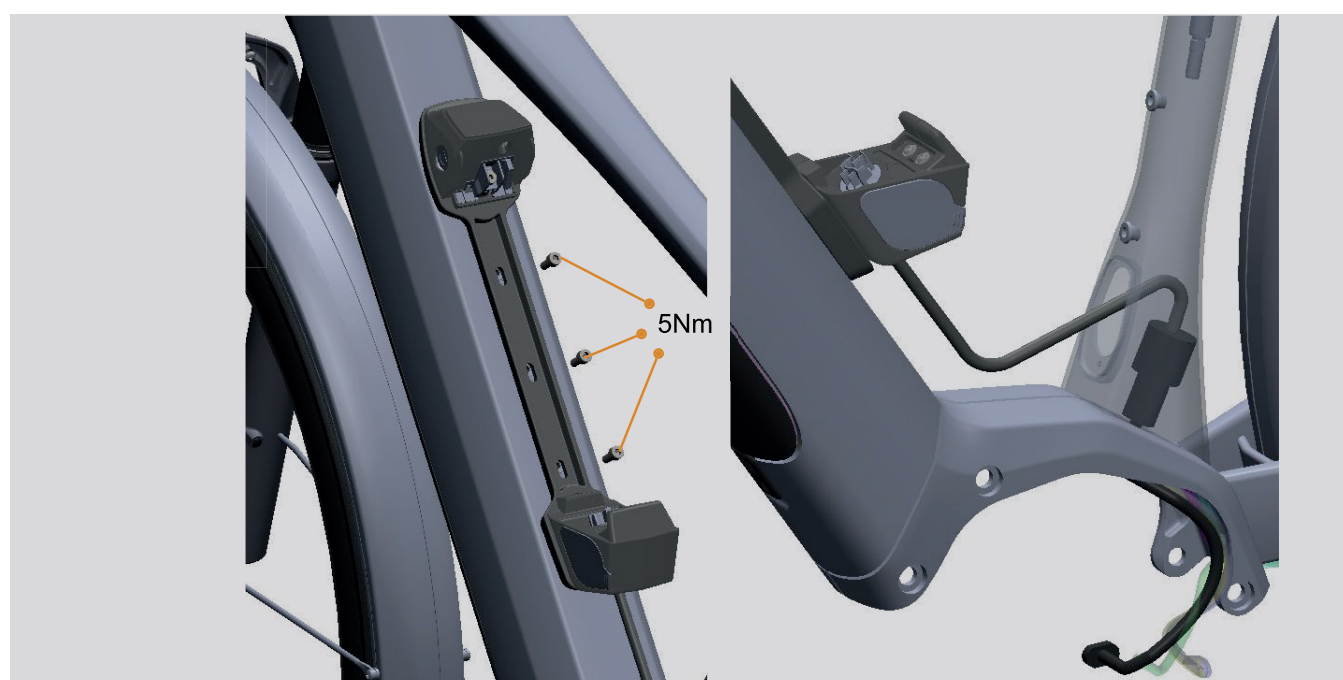


1.5 Y-CABLE CONNECTION

Connect the Y-Cable shortest end to the Bosch Power-Tube and then pack the cable inside the motor housing, leaving the other end inside the seat tube. This way the connection to the Bosch Power-Pack will be much easier.

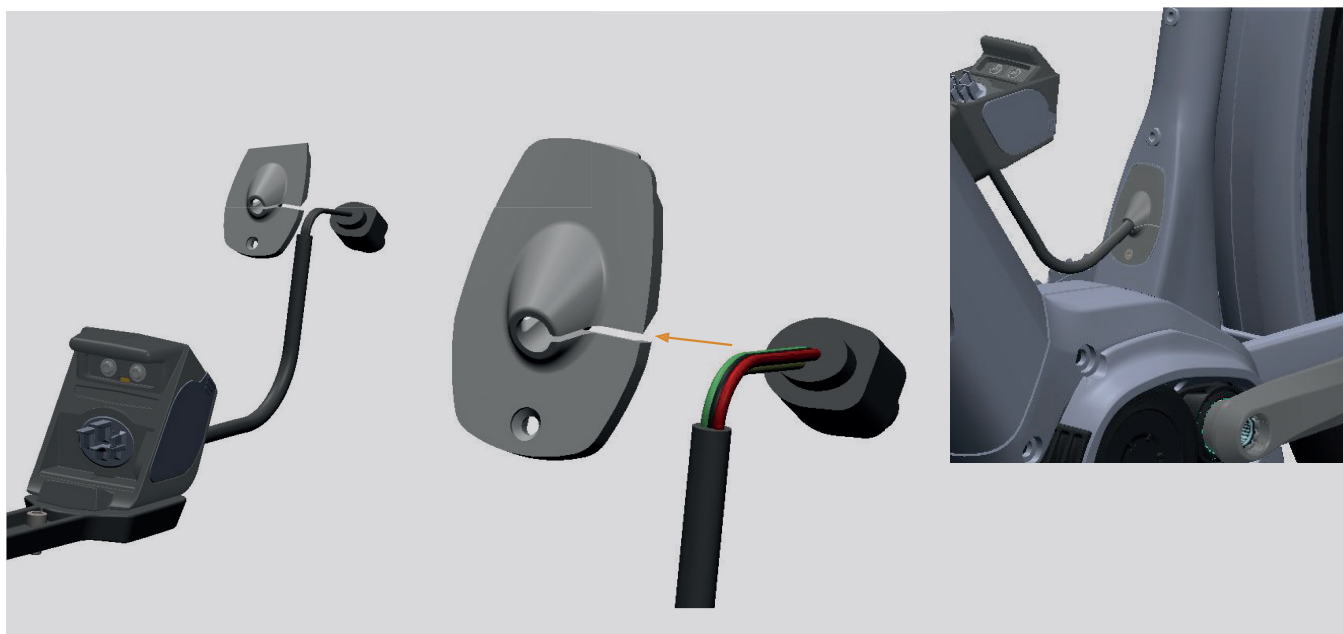


Mount the rail on to the frame with the pre-assembled brackets. Route the cable in and connect with the other end of the Y-Cable.



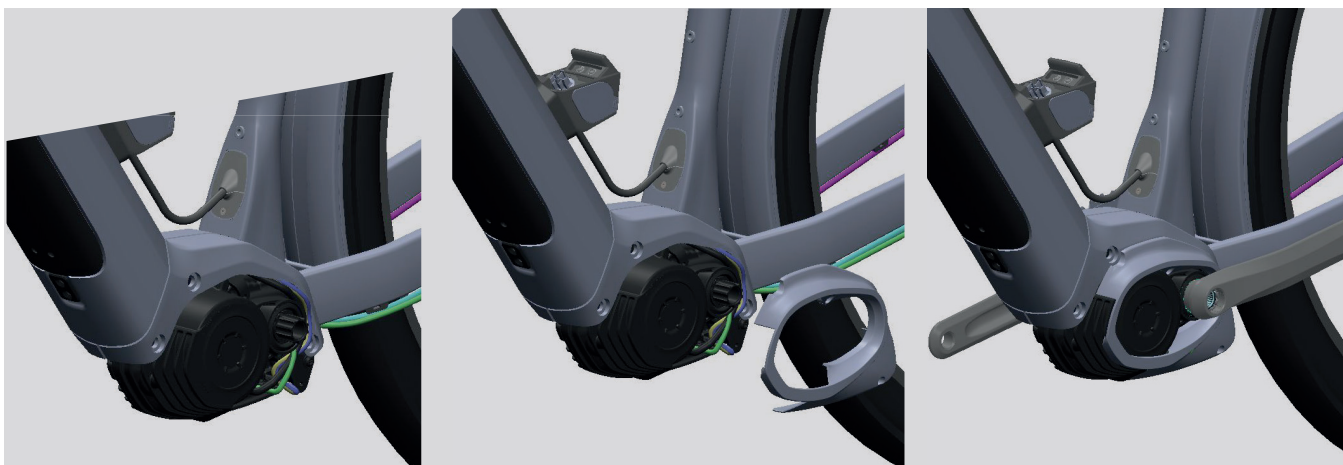
1.6 CABLE FRAME PLUG INSTALL

Locate the end of the cable where the cables have no sleeve. Slightly twist the plastic to slide in the smaller cables one by one. Pull the cable in and screw the M3 back in place. Tighten to 3Nm.



1.7 MOTOR ASSEMBLY

Mount the motor and then connect the cables. Mount the motor cover and install the cranks.





R I D E

B E Y O N D

#RIDEBEYOND

ENGINEERED IN GERMANY
SINCE 1993

SMART
PERFORMANCE
BIKES