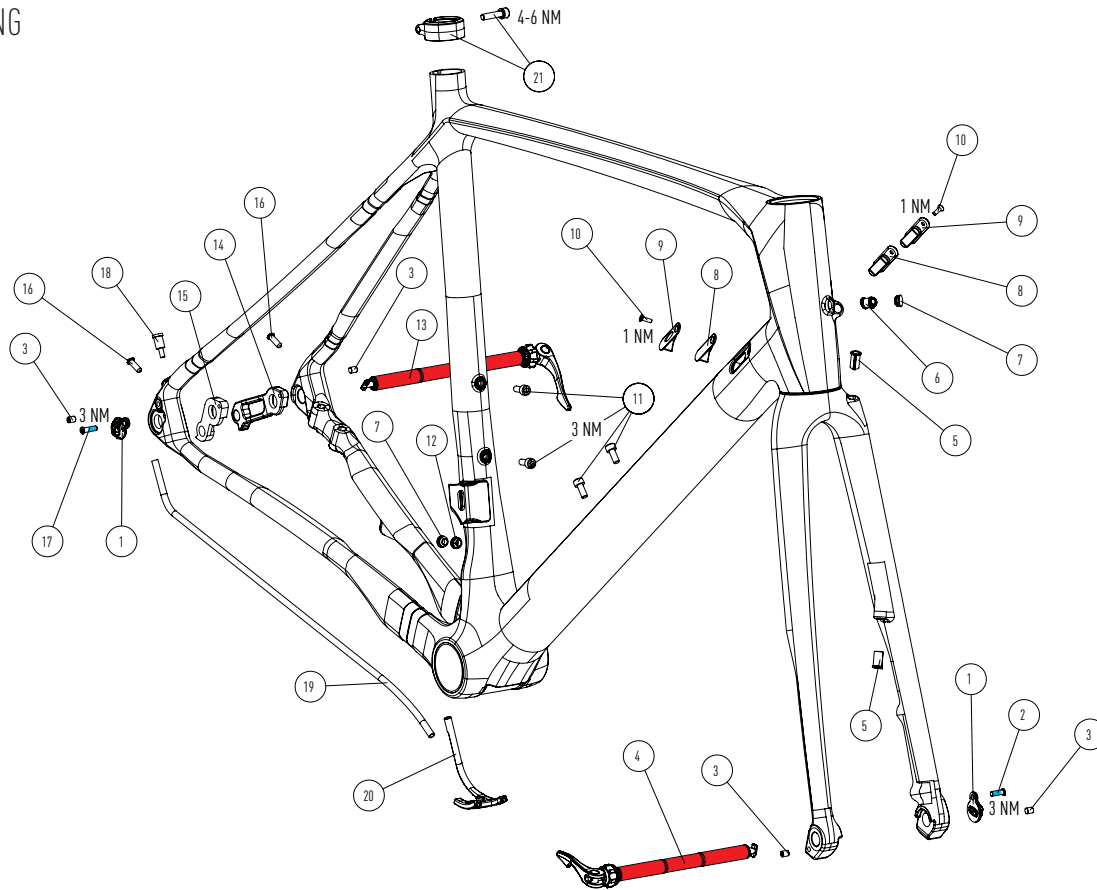
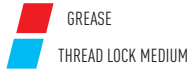


# EXPLODED DRAWING



# PARALANE

PP1821 | C

POS	PART #	PART NAME	QTY
01	KD325917002	R.A.T. NUT	2
02	KD325917080	R.A.T. NUT SCREW - CUSTOM - M4 X 12	1
03	NORM PART	FENDER SCREW - DIN 913 - M5 X 6 MM	4
04	KD161218030	R.A.T. FRONT 100 X 12	1
05	KD325916087	YOZU PLUG 6 MM	2
06	KD325914011	HT PLUG 65° - DI2	1
07	KD325916165	BLIND ROUND PLUG	2
08	KD325914024	DT CABLE PORT - BLIND	2
09	KD325914023	DT CABLE PORT - STOPPER	2
10	NORM PART (KD325916062)	DT CABLE PORT SCREW - DIN 7991 - M3 X 10 MM	2

11	KD199119009	DCW BOTTLE CAGE SCREW M5 X 18	1
12	KD325918278	DI2 ROUND PLUG	2
13	KD160218029	R.A.T. REAR 142 X 12	1
14	KD325919141	DCW SHIMANO DIRECT MOUNT HANGER RR V-1	1
15	KD325915006	RD HANGER	1
16	KD325917110	FENDER STAYS PLUG	2
17	KD325917006	R.A.T. NUT SCREW - CUSTOM - M4 X 14	1
18	KD325915031	RD EXIT CABLE STOP	1
19	KD325915032	CS CABLE LINER	1
20	KD150914001	BB CABLE GUIDE	1
21	KD125419002	SEAT CLAMP 30.4 MM WITH SCREW - DIN912 - M5 X 22 MM	1

<b>MATERIAL</b>	CARBON
<b>WHEELSIZE</b>	700C / 12 X 100 - 700C / 12 X 142 / MAX TIRE WIDTH 35 MM / 32 MM WITH FENDERS
<b>HEADSET</b>	UPPER IS Ø42 MM - LOWER IS Ø52 MM
<b>FORK</b>	700C - LENGTH 380 MM - RAKE 46 MM
<b>SEATPOST / SEATCLAMP</b>	Ø25,4 MM - Ø30,4 MM - MINIMUM INSERT 100 MM
<b>MAX SEATPOST INSERTION</b>	XS: 200 MM S: 230 MM M: 260 MM L: 280 MM XL: 300 MM XXL: 340 MM
<b>FRONT BRAKEMOUNT</b>	FLATMOUNT Ø140 MM - MAX. ROTOR Ø160 MM
<b>FRONT AXLE</b>	R.A.T.
<b>REAR BRAKEMOUNT</b>	FLATMOUNT Ø140 MM - MAX. ROTOR Ø160 MM
<b>REAR AXLE</b>	R.A.T.
<b>RD HANGER</b>	FOCUS
<b>FD MOUNT</b>	BRAZED ON TYPE
<b>BOTTOM BRACKET</b>	PF86,5 MM
<b>CHAINRING</b>	MAX CHAINRING SIZE 2BY: 53/39 CHAINLINE: 43,5 MM
<b>MAX SYSTEM WEIGHT</b>	110 KG