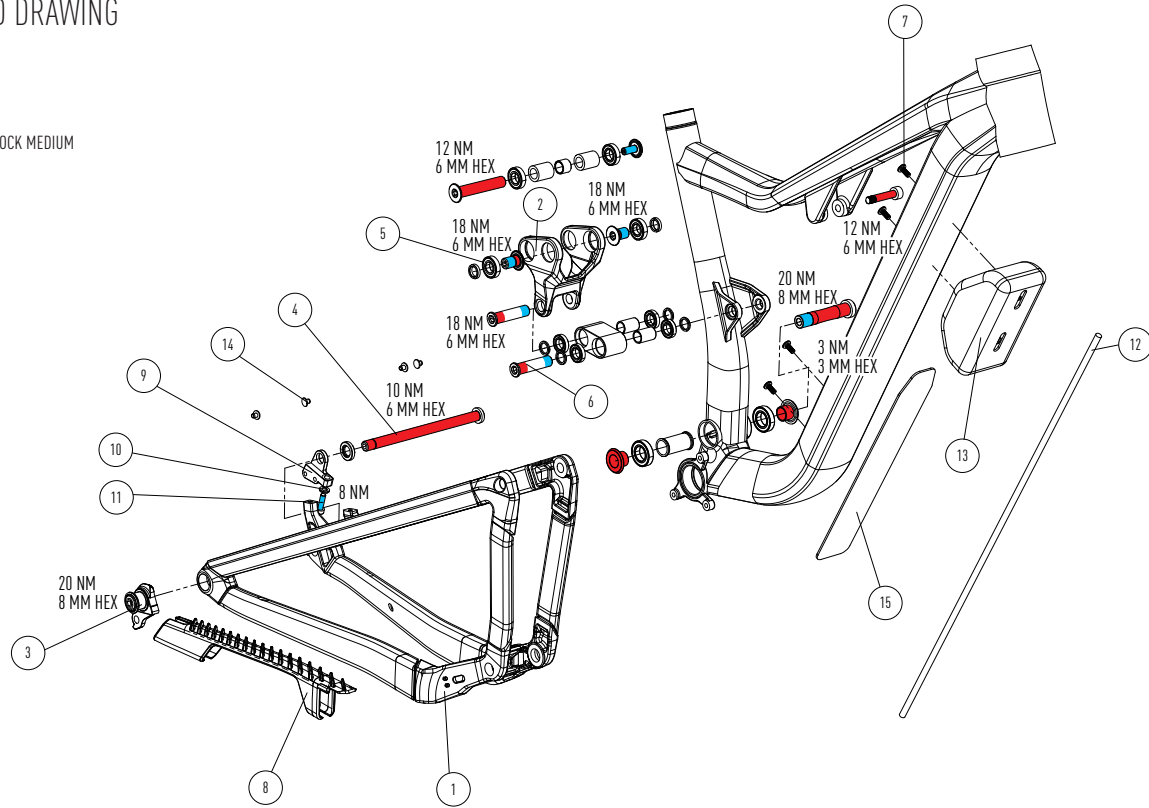
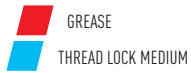
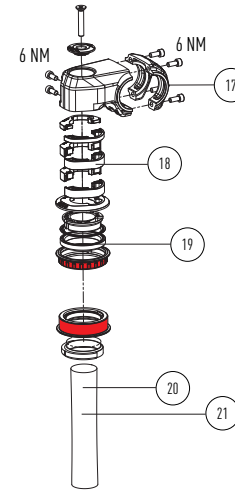


EXPLODED DRAWING



COCKPIT WITH BLOCK LOCK



THRON

PP2104 | AL-AL

POS	PART #	PART NAME	QTY
01	KD220121010	REAR TRIANGLE	1
02	KD325921224	LINKAGE SET: MAINLINK & GUIDELINK	1
03	KD325921081	SRAM UDH HANGER	1
04	KD160218036	AXLE 148 X12	1
05	KD325920905	BEARING SET: 2 X 61903, 4 X 61801, 4 X 61901	1
06	KD325920906	PIVOT SET: ALL SCREWS, WASHERS AND SPACERS	1
07	KD199119009	BOTTLE CAGE SCREW	4
08	KD325921229	CHAINSTAY PROTECTOR	1
09	KD325921086	KICKSTAND ADAPTER	1
10	NORM PART	WASCHER ISO7091 - 5	1
11	NORM PART	SCREW DIN912 M6 X 20	1

12	KD110916004	NOISE CANCELLING TUBE	1
13	KD325921304	TOOL BAG	1
14	KD325920039	BLIND PLUGS M6	4
15	KD325921309	DOWNTUBE PROTECTOR	1
16	KD410016915	FRAMEPROTECTION STICKER	1
17	KD120421903	STEM KIT	1
18	KD120421902	SPACER KIT	1
19	KD120421901	HEADSET KIT WITH BLOCK LOCK	1
20	KD215221501	STEERER PROTECTOR HOSE FOR S-M	1
21	KD215221502	STEERER PROTECTOR HOSE FOR L-XL	1

MATERIAL	ALLOY 7005 - ALLOY 7005
WHEELSIZE	29" / 15 X 110 - 29" / 12 X 148 / MAX TIRE 64MM
TRAVEL	FRONT 130MM - REAR 130MM
SHOCK	LENGTH 190MM - STROKE 45MM - HARDWARE SHAFT 25X8MM - NO HARDWARE BODY
HEADSET	UPPER ZS Ø56MM - LOWER ZS Ø56MM
FORK	29" - LENGTH 541MM - RAKE 44MM
SEATPOST / SEATCLAMP	Ø31,6MM - Ø34,9MM - MINIMUM INSERT 100MM
MAX SEATPOST INSERTION	S: 235MM M: 265MM L: 295MM XL: 315MM
REAR BRAKEMOUNT	POSTMOUNT Ø180MM - MAX. ROTOR Ø203MM
REAR AXLE	173MM / Ø12MM / PITCH 1,0
RD HANGER	SRAM UDH
BOTTOM BRACKET	BSA73MM
CHAINRING	MIN CHAINRING SIZE: 30 / MAX CHAINRING SIZE: 34 / CHAINLINE: 52MM
KICK STAND MOUNT	WITH ADAPTOR 18MM
REAR SHOCK SAG	SAG IN %: 30 / SAG IN MM: 13,5
MAX SYSTEM WEIGHT	110 KG