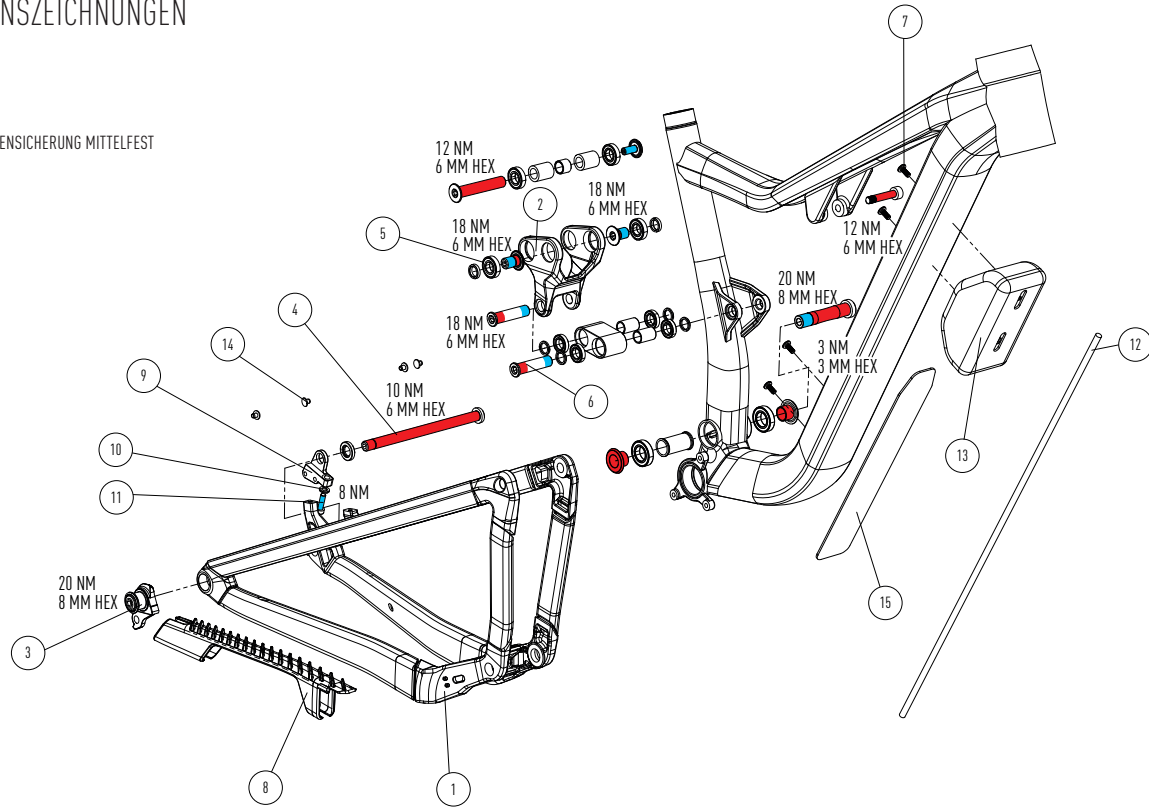
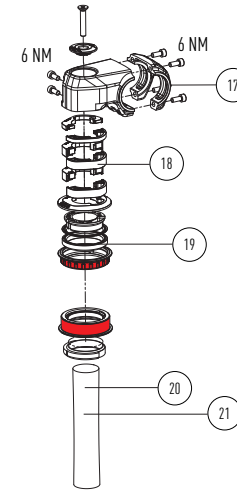


EXPLOSIONSZEICHNUNGEN

 FETT
SCHRAUBENSICHERUNG MITTELFEST



COCKPIT MIT BLOCK LOCK



THRON

PP2104 | AL-AL

| POS | PART # | PART NAME | QTY |
|-----|-------------|--|-----|
| 01 | KD220121010 | REAR TRIANGLE | 1 |
| 02 | KD325921224 | LINKAGE SET: MAINLINK & GUIDELINK | 1 |
| 03 | KD325921081 | SRAM UDH HANGER | 1 |
| 04 | KD160218036 | AXLE 148 X12 | 1 |
| 05 | KD325920905 | BEARING SET: 2 X 61903, 4 X 61801, 4 X 61901 | 1 |
| 06 | KD325920906 | PIVOT SET: ALL SCREWS, WASHERS AND SPACERS | 1 |
| 07 | KD199119009 | BOTTLE CAGE SCREW | 4 |
| 08 | KD325921229 | CHAINSTAY PROTECTOR | 1 |
| 09 | KD325921086 | KICKSTAND ADAPTER | 1 |
| 10 | NORM PART | WASCHER ISO7091 - 5 | 1 |
| 11 | NORM PART | SCREW DIN912 M6 X 20 | 1 |

| | | | |
|----|-------------|---------------------------------|---|
| 12 | KD110916004 | NOISE CANCELLING TUBE | 1 |
| 13 | KD325921304 | TOOL BAG | 1 |
| 14 | KD325920039 | BLIND PLUGS M6 | 4 |
| 15 | KD325921309 | DOWNTUBE PROTECTOR | 1 |
| 16 | KD410016915 | FRAMEPROTECTION STICKER | 1 |
| 17 | KD120421903 | STEM KIT | 1 |
| 18 | KD120421902 | SPACER KIT | 1 |
| 19 | KD120421901 | HEADSET KIT WITH BLOCK LOCK | 1 |
| 20 | KD215221501 | STEERER PROTECTOR HOSE FOR S-M | 1 |
| 21 | KD215221502 | STEERER PROTECTOR HOSE FOR L-XL | 1 |

| | |
|-------------------------------|---|
| MATERIAL | ALLOY 7005 - ALLOY 7005 |
| WHEELSIZE | 29" / 15 X 110 - 29" / 12 X 148 / MAX TIRE 64MM |
| TRAVEL | FRONT 130MM - REAR 130MM |
| SHOCK | LENGTH 190MM - STROKE 45MM - HARDWARE SHAFT 25X8MM - NO HARDWARE BODY |
| HEADSET | UPPER ZS Ø56MM - LOWER ZS Ø56MM |
| FORK | 29" - LENGTH 541MM - RAKE 44MM |
| SEATPOST / SEATCLAMP | Ø31,6MM - Ø34,9MM - MINIMUM INSERT 100MM |
| MAX SEATPOST INSERTION | S: 235MM M: 265MM L: 295MM XL: 315MM |
| REAR BRAKEMOUNT | POSTMOUNT Ø180MM - MAX. ROTOR Ø203MM |
| REAR AXLE | 173MM / Ø12MM / PITCH 1,0 |
| RD HANGER | SRAM UDH |
| BOTTOM BRACKET | BSA73MM |
| CHAINRING | MIN CHAINRING SIZE: 30 / MAX CHAINRING SIZE: 34 / CHAINLINE: 52MM |
| KICK STAND MOUNT | WITH ADAPTOR 18MM |
| REAR SHOCK SAG | SAG IN %: 30 / SAG IN MM: 13,5 |
| MAX SYSTEM WEIGHT | 110 KG |