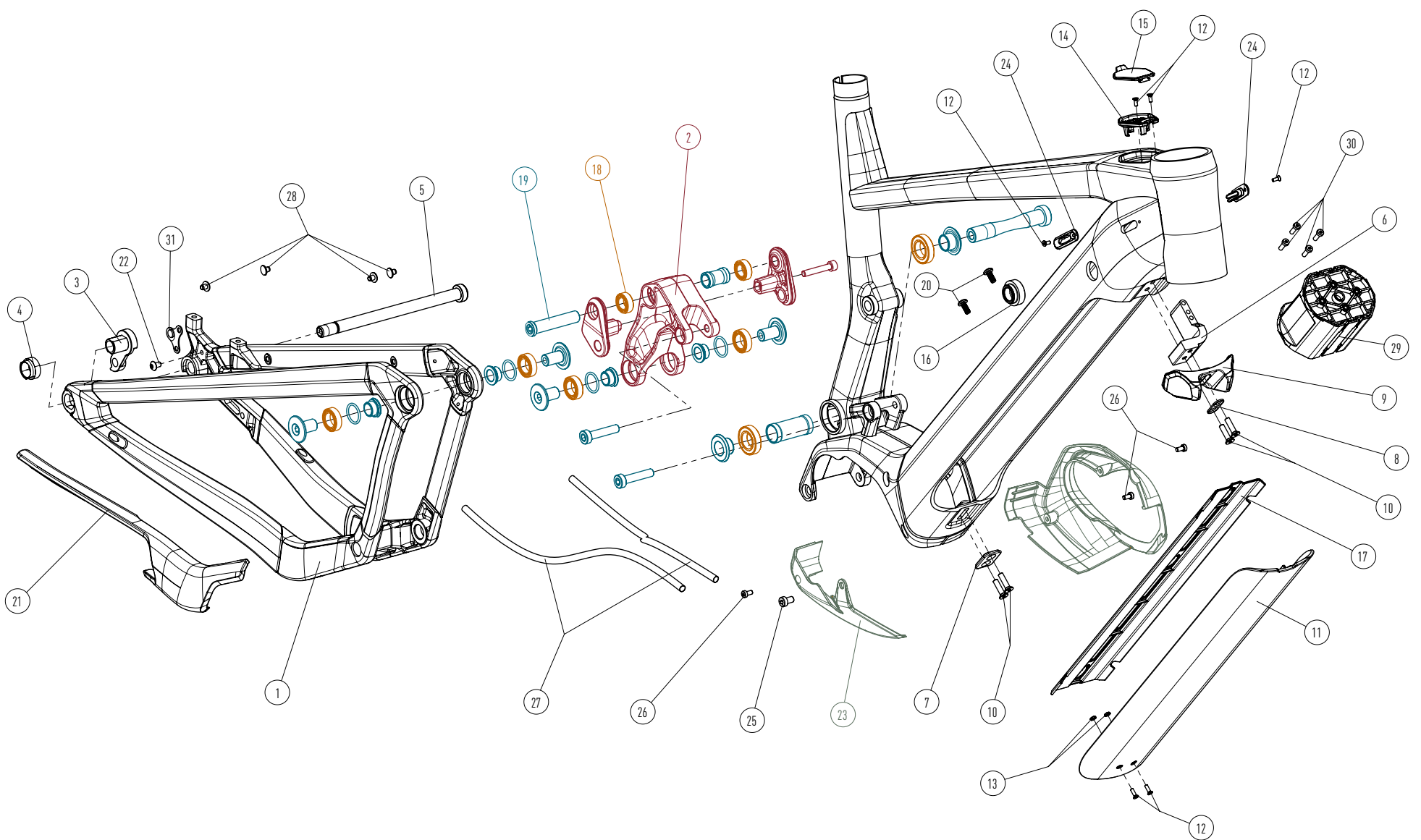


PP2009 | AL

POS	PART #	PART NAME	QTY
01	KD220420005	REAR TRIANGLE	1
02	KD325929995	LINKAGE SET	1
03	KD325920004	HANGER	1
04	KD325920005	HANGER NUT	1
05	KD160218036	AXLE 148 X 12	1
06	KD325920006	L - BRACKET	1
07	KD325920007	TWIN WASHER - LOWER POS.	1
08	KD199318004	TWIN WASHER - UPPER POS.	1
09	KD325920021	FORK BUMPER	1
10	NORM PART	SCREW DIN 7991 M5 X 20	4
11	KD325920024	BATTERY COVER 600	1
12	NORM PART	SCREW DIN 7991 M3 X 10	6
13	NORM PART	NUT DIN 439 M3	2
14	KD325920025	CHARG PORT BRACKET	1
15	KD325920026	CHARG PORT COVER	1
16	KD325920027	LOCK COVER	1

17	KD325920028	CABLE CHANNEL	1
18	KD325929993	BEARING SET	1
19	KD325929994	PIVOT SET	1
20	KD199119009	BOTTLE CAGE SCREW	2
21	KD325920022	CHAINSTAY PROTECTOR	1
22	NORM PART	SCREW ISO 7380/1 M5 X 8	1
23	KD325920023	MOTOR COVER SET	1
24	KD325920029	CABLE PLUG	2
25	NORM PART	SCREW DIN 7984 M6 X 10	1
26	NORM PART	SCREW DIN7984 M4 X 8	3
27	KD325916095	PROTECTION LINER	2
28	KD325920039	BLIND PLUG M6	4
29	KD170620099	BATTERY EXTENSION (ONLY FOR PT 500 WH)	1
30	NORM PART	SCREW DIN 7984 M4 X 14 (ONLY FOR PT 500 WH)	4
31	KD170520003	SPEED SENSOR MAGNET	1

<b>MATERIAL</b>	ALUMINUM
<b>WHEELSIZE</b>	27.5" MAX. 2.8" / 70MM, 29" MAX. 2.6" / 65MM
<b>TRAVEL</b>	FRONT 130MM / REAR 130MM
<b>FORK</b>	29" LENGTH 540MM / RAKE 51MM
<b>SHOCK</b>	LENGTH 190MM / STROKE 45MM, HARDWARE 25 X 8MM
<b>HEADSET</b>	UPPER ZS 56, LOWER ZS 56
<b>BOTTOM BRACKET</b>	-
<b>SEATPOST / SEATCLAMP</b>	Ø 31.6MM / Ø 34.9MM
<b>BRAKEMOUNT</b>	POSTMOUNT 180MM, MAX ROTOR: 203MM
<b>REAR AXLE</b>	WIDTH 148MM / Ø 12MM
<b>ENGINE</b>	BOSCH CX GENERATION 4
<b>BATTERY</b>	BOSCH POWER TUBE 625WH
<b>MAX SYSTEM WEIGHT</b>	120KG
<b>KICK STAND MOUNT</b>	DIRECT 40



PP2009 | AL

POS	PART #	PART NAME	QTY
01	KD220420005	REAR TRIANGLE	1
02	KD325929995	LINKAGE SET	1
03	KD325920004	HANGER	1
04	KD325920005	HANGER NUT	1
05	KD160218036	AXLE 148 X 12	1
06	KD325920006	L - BRACKET	1
07	KD325920007	TWIN WASHER - LOWER POS.	1
08	KD199318004	TWIN WASHER - UPPER POS.	1
09	KD325920021	FORK BUMPER	1
10	NORM PART	SCREW DIN 7991 M5 X 20	4
11	KD325920024	BATTERY COVER 600	1
12	NORM PART	SCREW DIN 7991 M3 X 10	6
13	NORM PART	NUT DIN 439 M3	2
14	KD325920025	CHARGE PORT BRACKET	1
15	KD325920026	CHARGE PORT COVER	1
16	KD325920027	LOCK COVER	1
17	KD325920028	CABLE CHANNEL	1
18	KD325929993	BEARING SET	1
19	KD325929994	PIVOT SET	1

20	KD199119009	BOTTLE CAGE SCREW	2
21	KD325920022	CHAINSTAY PROTECTOR	1
22	NORM PART	SCREW ISO 7380 / 1 M5 X 8	1
23	KD325920023	MOTOR COVER SET	1
24	KD325920029	CABLE PLUG	2
25	NORM PART	SCREW DIN 7984 M6 X 10	1
26	NORM PART	SCREW DIN 7984 M4 X 8	3
27	KD325916095	PROTECTION LINER	2
28	KD170620099	BATTERY EXTENSION (ONLY FOR PT 500 WH)	1
29	NORM PART	SCREW DIN 7984 M4 X 14 (ONLY FOR PT 500 WH)	4
30	KD170520003	SPEED SENSOR MAGNET	1
31	KD140120003	FRONT FENDER SET	1
32	KD140120502	REAR FENDER SET	1
33	NORM PART	SCREW DIN 7984 M5 X 10	3
34	NORM PART	WASHER ISO 7091 - 5	3
35	KD130120003	REAR RACK	1
36	NORM PART	SCREW DIN 7984 M6 X 16	4
37	NORM PART	WASHER ISO 7091 - 6	4

<b>MATERIAL</b>	ALUMINUM
<b>WHEELSIZE</b>	27.5" MAX. 2.8" / 70MM, 29" MAX. 2.6" / 65MM
<b>TRAVEL</b>	FRONT 130MM / REAR 130MM
<b>FORK</b>	29" LENGTH 540MM / RAKE 51MM
<b>SHOCK</b>	LENGTH 190MM / STROKE 45MM, HARDWARE 25 X 8MM
<b>HEADSET</b>	UPPER ZS 56, LOWER ZS 56
<b>BOTTOM BRACKET</b>	-
<b>SEATPOST / SEATCLAMP</b>	Ø 31.6MM / Ø 34.9MM
<b>BRAKEMOUNT</b>	POSTMOUNT 180MM, MAX ROTOR: 203MM
<b>REAR AXLE</b>	WIDTH 148MM / Ø 12MM
<b>ENGINE</b>	BOSCH CX GENERATION 4
<b>BATTERY</b>	BOSCH POWER TUBE 625WH
<b>MAX SYSTEM WEIGHT</b>	120KG
<b>KICK STAND MOUNT</b>	DIRECT 40

