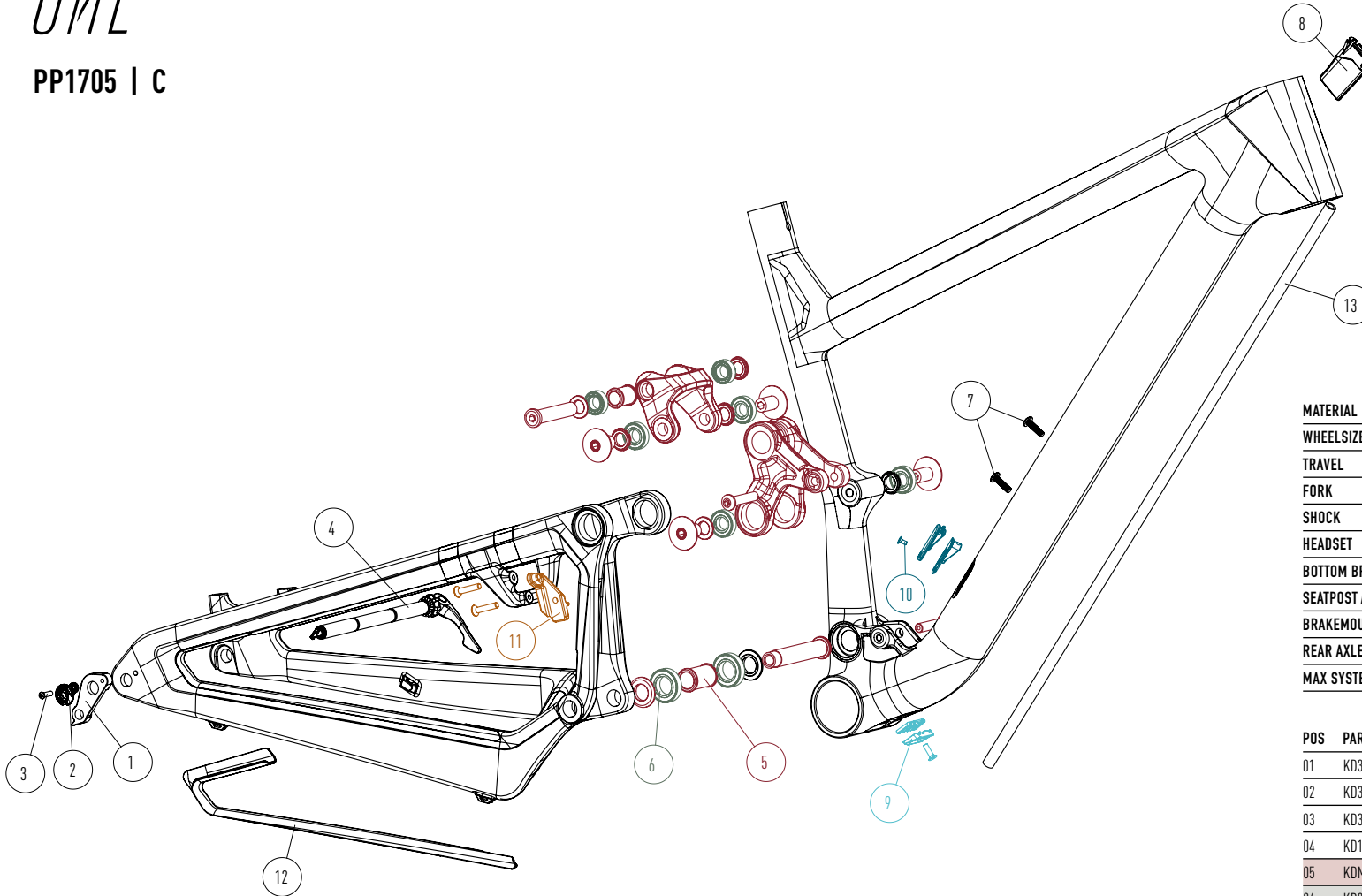


FOCUS
ONE

PP1705 | C

EXPLODED DRAWING



MATERIAL	CARBON
WHEELSIZE	29" MAX. 2,3" / 56MM
TRAVEL	FRONT 120MM / REAR 100MM
FORK	29" LENGTH 526MM / RAKE 51MM
SHOCK	LENGTH 165MM / STROKE 38MM, HARDWARE 22,2 X 8MM
HEADSET	UPPER IS 42, LOWER IS 52
BOTTOM BRACKET	PF30
SEATPOST / SEATCLAMP	Ø 31,6MM / Ø 34,9MM, MINIMUM INSERT: 100MM
BRAKEMOUNT	POSTMOUNT 160MM, MAX ROTOR: 180MM
REAR AXLE	WIDTH 148MM / Ø 12MM
MAX SYSTEM WEIGHT	110KG

POS	PART #	PART NAME	QTY
01	KD325917010	RD HANGER D9C-HG-1	1
02	KD325917002	R.A.T. EVO INSERT	1
03	KD325917006	R.A.T. SCREW 14MM	1
04	KD160218030	R.A.T. AXLE 148 X 1 2	1
05	KDMS260117901	ASSEMBLY KIT	1
06	KD325918117	BEARING KIT	1
07	KD199119009	BOTTLE CAGE SCREW	2
08	KD325917031	HT PLUG 4-CABLE	1
09	KD325917620	DT CABLE EXIT BRAKE / REAR DERAILLEUR	1
10	KD325917901	DT CABLE EXIT SHOCK / FRONT DERAILLEUR	1
11	KD325917619	FD MOUNT	1
12	KD330017002	CS PROTECTOR	1
13	KD110916004	NOISE CANCELLING TUBE	1