

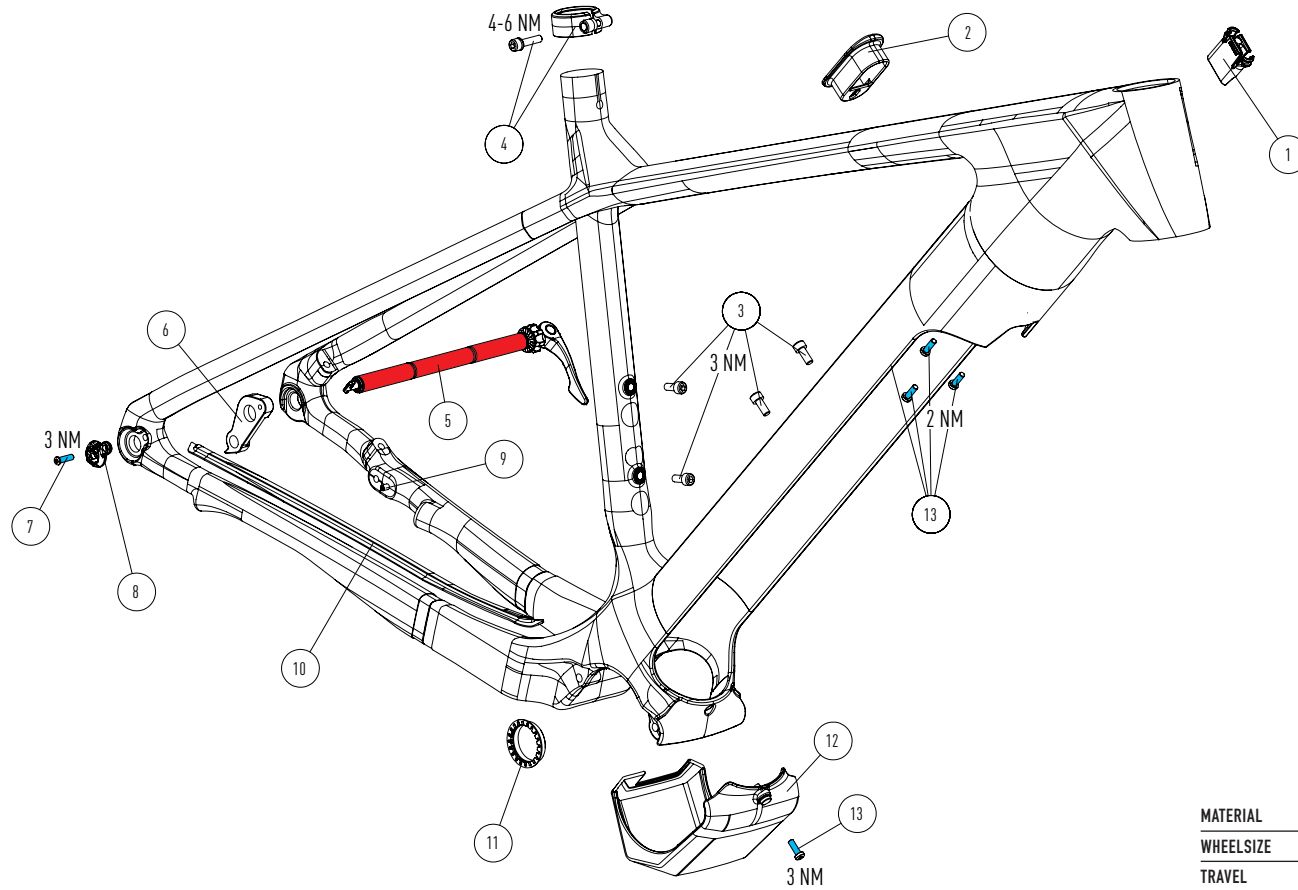


# EXPLODED DRAWING

 GREASE  
 THREAD LOCK MEDIUM



# RAVEN<sup>2</sup>

PP1824 | C

POS	PART #	PART NAME	QTY
01	KD325918303	HT 4 WAY CABLE PLUG	1
02	KD170918019	EVATION LOCK BUTTON FRAME	1
03	KD199119008	DCW BOTTLE CAGE SCREW M5 X 12	4
04	KD125418007	SEAT CLAMP 30.4MM WITH SCREW - DIN912 - M5 X 22MM - WITH WASHER	1
05	KD160218030	THRU AXLE REAR 148 X 12MM R.A.T. EVO BOOST	1
06	KD325914012	RD HANGER	1

07	KD325917006	R.A.T. NUT SCREW - CUSTOM - M4 X 14	1
08	KD325917002	R.A.T. NUT	1
09	NORM PART	SPEED SENSOR STOPPING SCREW - DIN 913 - M4 X 12MM	1
10	KD325918271	CHAINSTAY PROTECTOR	1
11	KD170919003	LOCK RING FOR EVATION	1
12	KD325919223	EVATION COVER FOR FCBF-14	1
13	NORM PART	DIN7985 TX 20 M4 X P0.7 X 12	5

<b>MATERIAL</b>	CARBON
<b>WHEELSIZE</b>	29" MAX. 2.2" / 56MM TIRE
<b>TRAVEL</b>	FRONT 100MM
<b>HEADSET</b>	UPPER ZS Ø42MM - LOWER ZS Ø52MM
<b>FORK</b>	29" - LENGTH 500MM - RAKE 51MM
<b>SEATPOST / SEATCLAMP</b>	Ø27,2MM - Ø30,4MM - MINIMUM INSERT 100MM
<b>FRONT AXLE</b>	110MM / Ø15MM
<b>REAR BRAKEMOUNT</b>	POSTMOUNT Ø160MM - MAX. ROTOR Ø180MM
<b>REAR AXLE</b>	148MM / Ø12MM
<b>RD HANGER</b>	FOCUS
<b>ENGINE</b>	FAZUA EVATION
<b>BATTERY</b>	FAZUA 252WH
<b>MAX SYSTEM WEIGHT</b>	120KG