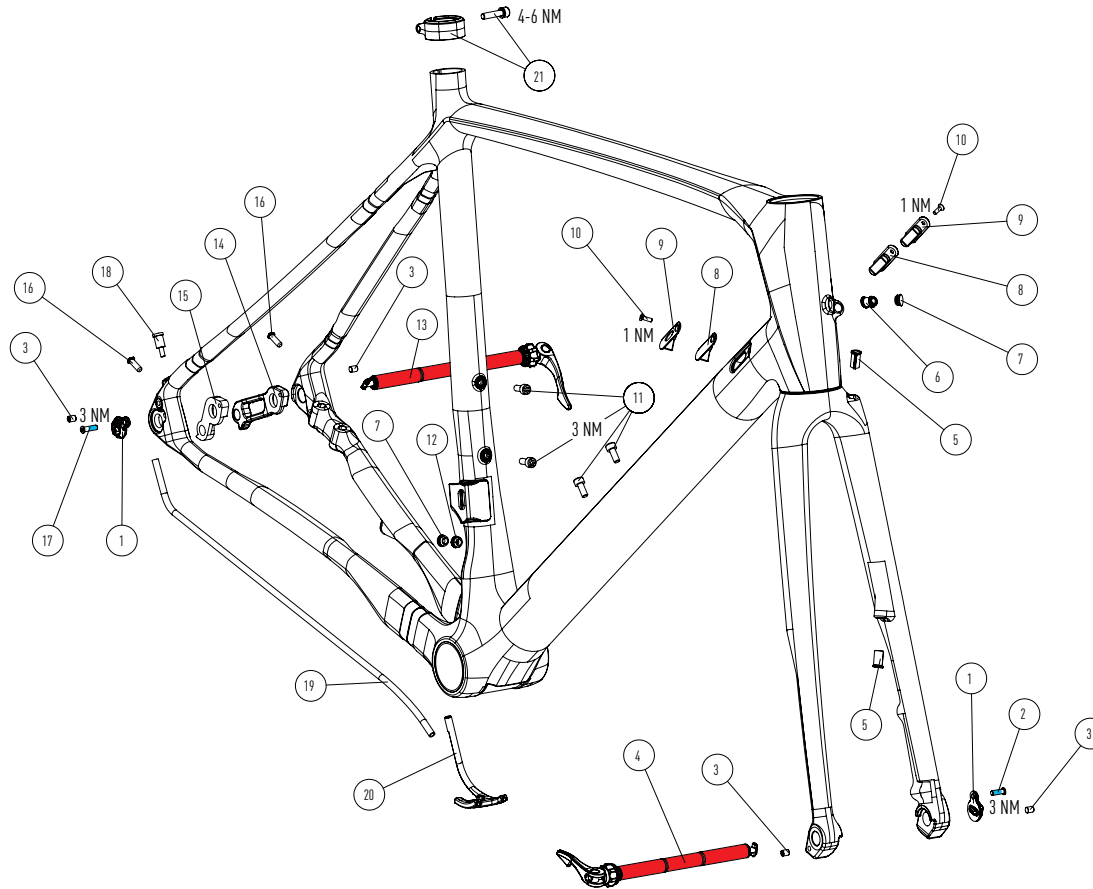
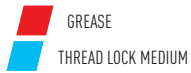


EXPLODED DRAWING



PARALANE

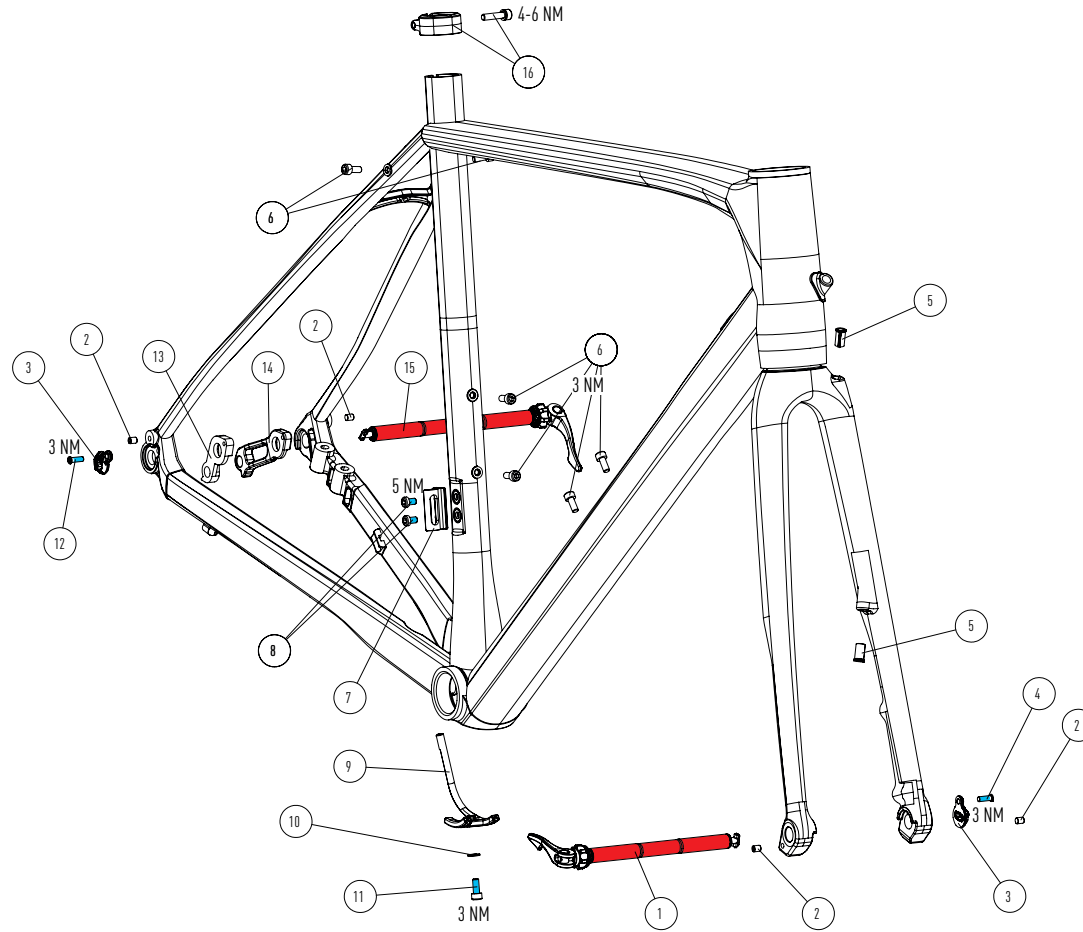
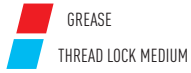
PP1821 | C

POS	PART #	PART NAME	QTY
01	KD325917002	R.A.T. NUT	2
02	KD325917080	R.A.T. NUT SCREW - CUSTOM - M4 X 12	1
03	NORM PART	FENDER SCREW - DIN 913 - M5 X 6MM	4
04	KD161218030	R.A.T. FRONT 100 X 12	1
05	KD325916087	YOZU PLUG 6MM	2
06	KD325914011	HT PLUG 65° - DI2	1
07	KD325916165	BLIND ROUND PLUG	2
08	KD325914024	DT CABLE PORT - BLIND	2
09	KD325914023	DT CABLE PORT - STOPPER	2
10	NORM PART (KD325916062)	DT CABLE PORT SCREW - DIN 7991 - M3 X 10MM	2

11	KD199119009	DCW BOTTLE CAGE SCREW M5 X 18	1
12	KD325918278	DI2 ROUND PLUG	2
13	KD160218029	R.A.T. REAR 142 X 12	1
14	KD325919141	DCW SHIMANO DIRECT MOUNT HANGER RR V-1	1
15	KD325915006	RD HANGER	1
16	KD325917110	FENDER STAYS PLUG	2
17	KD325917006	R.A.T. NUT SCREW - CUSTOM - M4 X 14	1
18	KD325915031	RD EXIT CABLE STOP	1
19	KD325915032	CS CABLE LINER	1
20	KD150914001	BB CABLE GUIDE	1
21	KD125419002	SEAT CLAMP 30.4MM WITH SCREW - DIN912 - M5 X 22MM	1

MATERIAL	CARBON
WHEELSIZE	700C MAX. 35MM TIRE
HEADSET	UPPER IS Ø42MM - LOWER IS Ø52MM
FORK	700C - LENGTH 380MM - RAKE 46MM
SEATPOST / SEATCLAMP	Ø25,4MM - Ø30,4MM - MINIMUM INSERT 100MM
FRONT BRAKEMOUNT	FLATMOUNT Ø140MM - MAX. ROTOR Ø160MM
FRONT AXLE	100MM / Ø12MM
REAR BRAKEMOUNT	FLATMOUNT Ø140MM - MAX. ROTOR Ø160MM
REAR AXLE	142MM / Ø12MM
RD HANGER	FOCUS
BOTTOM BRACKET	PFØ6,5MM
MAX SYSTEM WEIGHT	110 KG

EXPLODED DRAWING



PARALANE

PP1718 | AL

POS	PART #	PART NAME	QTY
01	KD161218030	R.A.T. FRONT 100 X 12	1
02	NORM PART	FENDER SCREW - DIN 913 - M5 X 6MM	4
03	KD325917037	R.A.T. NUT	2
04	KD325917080	R.A.T. NUT SCREW - CUSTOM - M4 X 12	1
05	KD325916087	YOZU PLUG 6MM	2
06	KD199119009	DCW BOTTLE CAGE SCREW M5 X 18	6
07	KD325917103	FD HANGER	1
08	NORM PART	FD HANGER SCREW DIN 7984 TX - M5 X 10	2

09	KD150913019	BB CABLE GUIDE	1
10	NORM PART	FLAT WASHER DIN 125 M5	1
11	NORM PART	CABLE GUIDE SCREW - DIN 912 - M5 X 12MM	1
12	KD325917006	R.A.T. NUT SCREW - CUSTOM - M4 X 14	1
13	KD325915006	RD HANGER	1
14	KD325919141	DCW SHIMANO DIRECT MOUNT HANGER RR V-1	1
15	KD160218029	R.A.T. REAR 142 X 12	1
16	KD125418005	SEAT CLAMP 30.4MM WITH SCREW - DIN912 - M5 X 22MM	1

MATERIAL	ALUMINUM 7005
WHEELSIZE	700C MAX. 35MM TIRE
HEADSET	UPPER ZS Ø44MM - LOWER ZS Ø49,8MM
FORK	700C - LENGTH 380MM - RAKE 46MM
SEATPOST / SEATCLAMP	Ø25,4MM - Ø30,4MM - MINIMUM INSERT 100MM
FRONT BRAKEMOUNT	FLATMOUNT Ø140MM - MAX. ROTOR Ø160MM
FRONT AXLE	FRONT AXLE WIDTH / ØFRONT AXLE Ø
REAR BRAKEMOUNT	FLATMOUNT Ø140MM - MAX. ROTOR Ø160MM
REAR AXLE	142MM / Ø12MM
RD HANGER	FOCUS
BOTTOM BRACKET	BSA68MM
MAX SYSTEM WEIGHT	110 KG