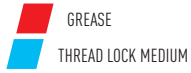
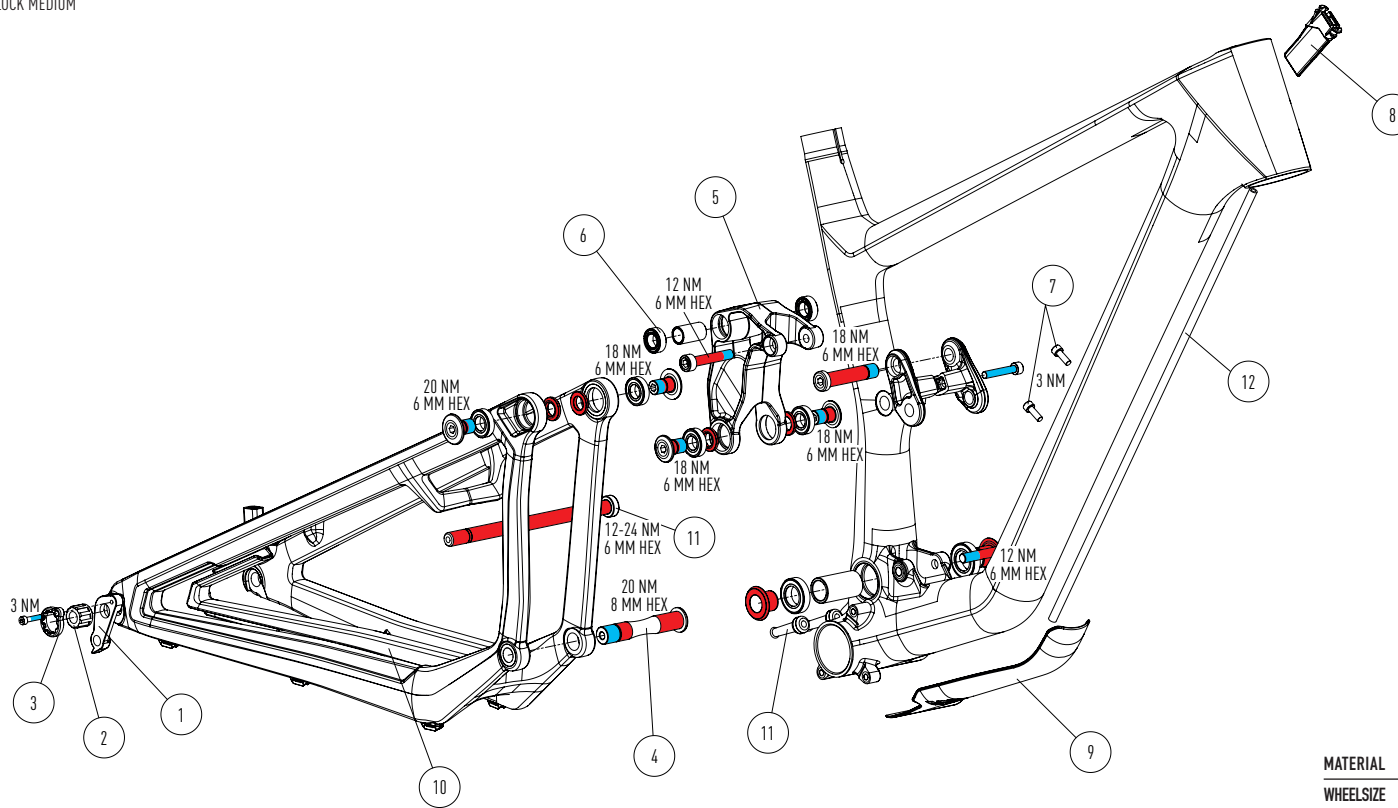


EXPLODED DRAWING



FOCUS *SAM*
PP1901 | C-C

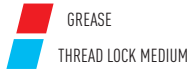


POS	PART #	PART NAME	QTY
01	KD325917010	RD HANGER D9C-HG-1	1
02	KD325912012	THRU AXLE NUT	1
03	KD325916001	NUTKEEPER + SCREW	1
04	KD330019007	PIVOT SET: ALL SCREWS, WASHERS AND SPACERS	1
05	KD330019006	LINKAGE SET: MAINLINK & GUIDELINK	1
06	KD325918121	BEARING SET: 2 X 61903 2RSR MAX, 2 X 3801 2RSR MAX, 4 X 61901 2RSR MAX	1

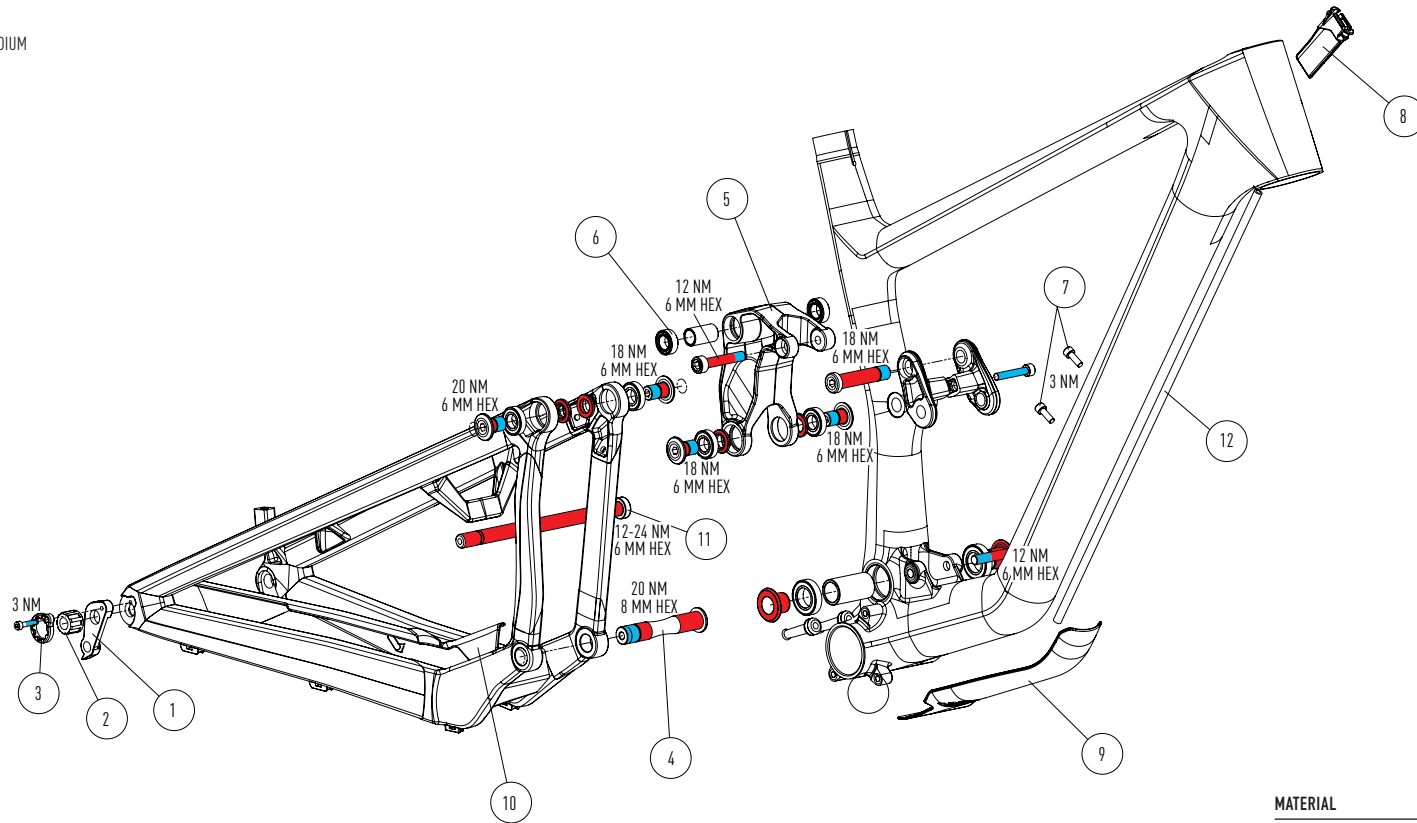
07	KD199119009	BOTTLE CAGE SCREW	2
08	KD325917031	HT PLUG 4-CABLE	1
09	KD325919901	DT PROTECTOR	1
10	KD325919902	CS PROTECTOR	1
11	KD160218036	THRU-AXLE 148 X 12 AXLE	1
12	KD110916004	NOISE CANCELLING TUBE	1

MATERIAL	CARBON - CARBON
WHEELSIZE	27.5" MAX. 2.5" / 63MM TIRE
TRAVEL	FRONT 170MM - REAR 170MM
SHOCK	LENGTH 210MM - STROKE 65MM - HARDWARE 30 X 8MM
HEADSET	UPPER IS Ø42MM - LOWER IS Ø52MM
FORK	27.5" - LENGTH 561MM - RAKE 42MM
SEATPOST / SEATCLAMP	Ø31,6MM - Ø34,9MM - MINIMUM INSERT 100MM
FRONT AXLE	110MM / Ø15MM
REAR BRAKEMOUNT	POSTMOUNT Ø180MM - MAX. ROTOR Ø200MM
REAR AXLE	REAR AXLE WIDTH / ØREAR AXLE Ø
RD HANGER	FOCUS
BOTTOM BRACKET	PF92MM
MAX SYSTEM WEIGHT	110 KG

EXPLODED DRAWING



FOCUS *SAM*
PP1901 | C-AL



POS	PART #	PART NAME	QTY
01	KD325917010	RD HANGER D9C-HG-1	1
02	KD325912012	THRU AXLE NUT	1
03	KD325916001	NUTKEEPER + SCREW	1
04	KD330019005	PIVOT SET: ALL SCREWS, WASHERS AND SPACERS	1
05	KD330019006	LINKAGE SET: MAINLINK & GUIDELINK	1
06	KD325918121	BEARING SET: 2 X 61903 2RSR MAX, 2 X 3801 2RSR MAX, 4 X 61901 2RSR MAX	1

07	KD199119009	BOTTLE CAGE SCREW	2
08	KD325917031	HT PLUG 4-CABLE	1
09	KD325919901	DT PROTECTOR	1
10	KD325919910	CS PROTECTOR	1
11	KD160218036	THRU-AXLE 148 X 12 AXLE	1
12	KD110916004	NOISE CANCELLING TUBE	1

MATERIAL	CARBON - ALUMINUM 7005
WHEELSIZE	27.5" MAX. 2.5" / 63MM TIRE
TRAVEL	FRONT 170MM - REAR 170MM
SHOCK	LENGTH 210MM - STROKE 65MM - HARDWARE 30X8MM
HEADSET	UPPER IS Ø42MM - LOWER IS Ø52MM
FORK	27.5" - LENGTH 561MM - RAKE 42MM
SEATPOST / SEATCLAMP	Ø31,6MM - Ø34,9MM - MINIMUM INSERT 100MM
FRONT AXLE	110MM / Ø15MM
REAR BRAKEMOUNT	POSTMOUNT Ø180MM - MAX. ROTOR Ø200MM
REAR AXLE	REAR AXLE WIDTH / ØREAR AXLE Ø
RD HANGER	FOCUS
BOTTOM BRACKET	PF92MM
MAX SYSTEM WEIGHT	110 KG