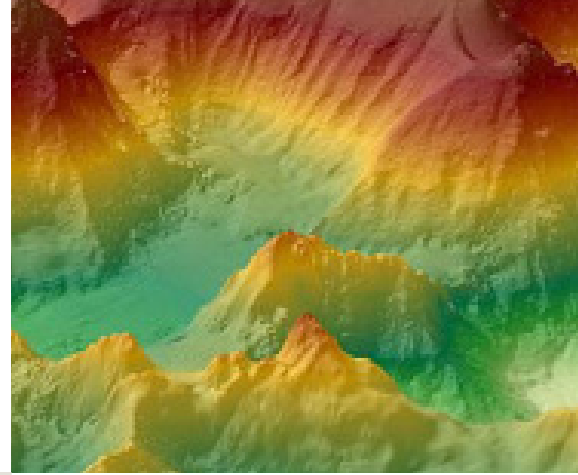




AW3D STANDARD DEM

DATA SHEET



AW3D Standard DEM

Available in the Maxar Elevation Suite from partner NTT Data, AW3D Standard is the highest resolution global digital elevation model (DEM) with pole to pole coverage. Wide-area Digital Elevation Models (DEM) are ideal for understanding large swaths of the landscape for orthorectification, forestry, agriculture, natural disaster planning, disaster response and more.

Features and benefits

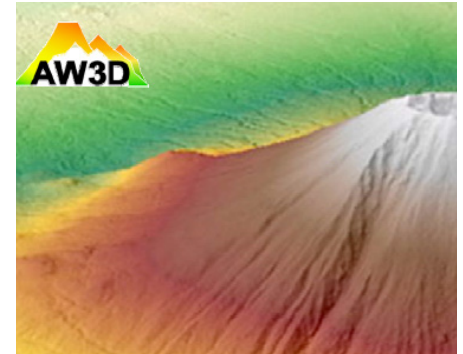
- Superior resolution and accuracy compared to competitor global DEMs
- Pole-to-pole global coverage
- Available off the shelf with rapid ordering turnaround times
- Higher resolution than competing off the-shelf DEMs
- Offered as DSM (minimum AOI 400 sq km) or DTM (minimum AOI 100 sq km)

Product specifications

- 2.5 m or 5 m resolution
- Vertical accuracy 5 m RMSE-7 m LE90
- Horizontal accuracy 5 m RMSE-7 m CE90

AVAILABLE PRODUCT TYPES	DSM OR DTM
Mesh size	2.5 m or 5 m
Horizontal accuracy, CE90	7 m
Vertical accuracy, LE90	7 m
Horizontal accuracy, RMSE	5 m
Vertical accuracy, RMSE	5 m
Delivery format	GeoTIFF
Delivery method	FTP, HDD

MOUNT FUJI, JAPAN



AW3D Standard DEM shown with hypsometric tinting



Available products

- Level 1: Unedited raw surface model (available upon request)
- Level 2: DSM
- Level 3: DTM
- Quality-control file/layer (optional)
- 2.5 m or 5 m raster data created during the DSM process. Provided on an AOI basis, it includes “correlation values” of (0–200) using unsigned 8 bits expressing confidence level of DSM height value

Horizontal datum

- WGS84 (if other datum is required, please contact us)

Vertical datum/ellipsoid

- WGS84 (Ellipsoid) or EGM96 (Elevation)

Map projection

- Lat/Lon or UTM (Level 1: DSM)
- UTM (Level 2: DSM and Level 3: DTM)

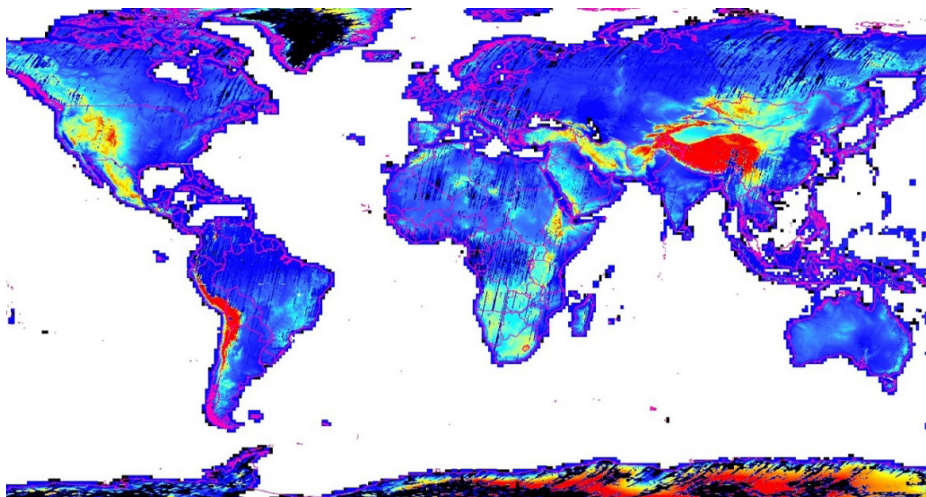
Void infill

- Level 1: DSM Not available
- Level 2: DSM
- Level 3: DTM—using 30 m SRTM (ASTER G-DEM for >N. 65 degree and >S. 60 degree) is available on Level 2 and Level 3 product

File formats

- Geotiff 16-bit signed integer (geotiff 32-bit signed floating point—available on request)

Coverage area map



Hypsometric elevation map showing global terrain. Purple=low elevations, red=high elevations, black=possible void areas that can be infilled with 30 m SRTM.

DELIVERABLES

- GeoTIFF
- DXF
- DWG
- CSV (ASCII text)
- STL