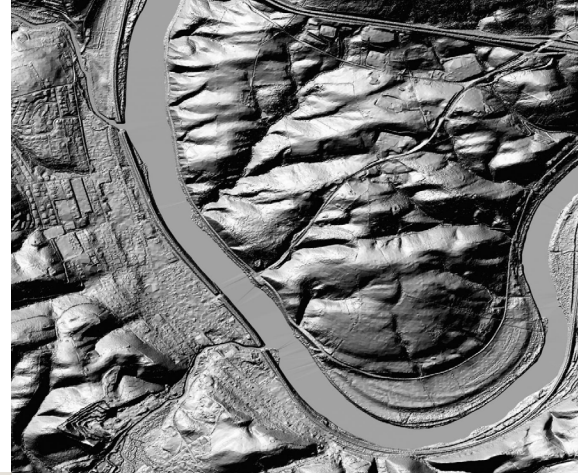




# SPATIAL ON DEMAND

## DATA SHEET



## Meeting a new standard for advanced networks

Successful energy companies need a common operational picture for mapping, elevation and logistics in order to intimately understand exploration, production and development activities, both onshore and offshore. Used by many of the top 100 energy companies, Spatial on Demand is the world's largest professionalgrade oil and gas geospatial solution. It enables quick and easy access across your enterprise to search, sort, select, share and store geospatial data sets—directly in the workflows you already use.

### Features and benefits

#### Save time and money

- With quick and easy access to the industry's largest array of mission-critical geospatial data sets, your team will spend less time searching and processing data and more time analyzing it.

#### Data as an asset

- Company-wide access to spatial data, information and insight enables you to make decisions with confidence.

#### Cloud Based—global delivery

- Numerous options allow you to use imagery and geospatial data in your application of choice as well as via hardcopy.

#### Global imagery basemap

- Streaming services directly into your workflow include the Maxar Basemap Suite, which features the most accurate, most recent and best resolution satellite imagery available, while providing huge cost savings over traditional means of image acquisition.

#### Find and use data

- Search, sort, filter and compare energy-specific data from numerous sources all in a single on-stop-shop platform.

#### Clip, zip, and ship

- Download capabilities enable data to be used in the field of destinations with no internet connectivity.

#### Global access and control

- Collaborate and share across the entire organization including contractors with no hidden user or transaction costs.

#### Fast global performance

- Map services allow for the fastest delivery of data even to remote locations with service levels of 99.9% uptime.

#### Private data hosting

- Ingesting, hosting, and serving of your proprietary data in secured cloud environment.

### GLOBAL DATA SETS

- Maxar basemap
- 70+ foundational data sets
- Bing maps
- TCarta marine bathymetry
- Landsat natural color
- Landsat 7, 4, 2 bands
- SRTM DEMs
- ASTER GDEM v2
- GEBCO global bathymetry
- USGS world geologic map

### REGIONAL DATA SETS

- Australia
- Canada
- Europe, Middle East, Africa
- South America
- United States

### PREMIUM DATA SETS

- Aerial imagery
- Custom bathymetry
- Lidar/radar
- Satellite imagery archive/tasking
- Offshore seeps

# MAXAR

## Subscription types

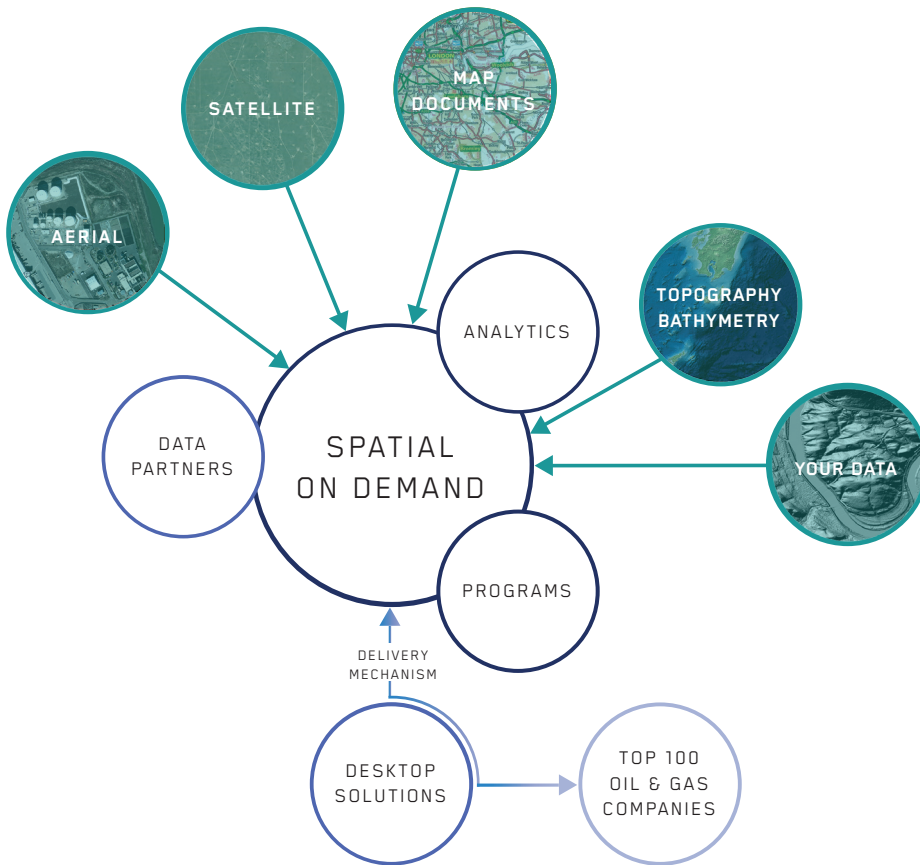
Spatial On Demand is available in two subscription options, both specially designed to save your teams time and money. Our streaming service suits smaller companies and our enterprise service is ideal for mid-to-large sized firms.

### Streaming:

- Access more than 40 mission-critical foundation datasets, including imagery, elevation topographic maps, bathymetry and many more that are widely used across oil and gas workflows, along with the Maxar Basemap Suite.
- Ensure all users are viewing the most recent data.
- Save time and resources otherwise spent on collecting, processing or storing large datasets.

### Enterprise:

- Host your own data in Spatial on Demand so your end users can access your proprietary image archives in addition to our rich foundation data sets and enhanced access to our Maxar Basemap Suite imagery products.
- Access to cloud-based dashboard, where you can search, discover, view and download your imagery.



## DELIVERABLES

Access geospatial data the way oil and gas teams already work today, with no new software or hardware needed. Support your global users by streaming data directly into custom web applications, GIS packages, or Geology/ Geophysical applications. Spatial on Demand streaming services integrate seamlessly with all major G&G applications. Spatial on Demand streaming services integrate seamlessly with all major G&G applications.

- Save time and money
- Esri ArcGIS
- Geographix: GeoAtlas
- Global Energy Mapper
- Google Earth
- IHS Kingdom
- IHS Petra
- Mesa Professional
- Petrel
- Petrosys
- Landmark Decision Space

## INDUSTRY APPLICATIONS

- New ventures
- Exploration
- Logistics & mapping
- Reservoir planning
- Downstream
- Regulatory / legal
- Health, environment, & safety
- Midstream
- Utilities

## CLOUD SERVICES

- Web Map Service: WMS
- Web Map Tile Service: WMTS
- Web Coverage Service: WCS
- Web Feature Service: WFS
- Esri ArcGIS Server Services
- Bing Maps API
- Web API - REST/SOAP

# MAXAR