



AFIX TRACKER LE

DATA SHEET



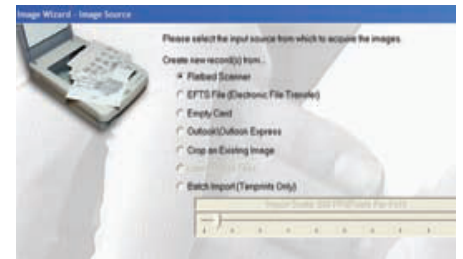
AFIX Tracker LE

AFIX Tracker LE provides all of the file entry and editing capabilities of the full AFIX Tracker Fingerprint and Palmprint Identification System, including the ability to capture tenprint, record palm print or latent images and mug shots from a wide variety of sources: flatbed scanners, connected live scan systems, directly from digital cameras, and from other AFIS systems. AFIX Tracker LE provides a full image editing toolset including both automatic and manual minutiae string extraction.

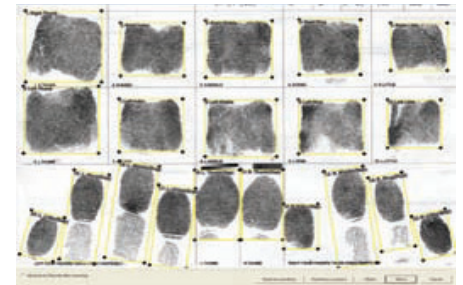
Features and benefits

- Allows easy integration with existing AFIX systems.
- User interface for file entry and editing is identical to AFIX Tracker – existing Tracker users already know how to operate Tracker LE.
- Fully NIST-EFTS compliant.
- FBI-certified WSQ and JPEG-2000 compression.
- Unlimited toll-free technical support and all software updates included.
- Enter fingerprints, palmprints, latents and mug shots via flatbed scanner, live scan, digital camera and other sources.
- Enter tenprint cards with a single scan.
- Replace poor-quality rolled impressions with corresponding plain impressions, or simultaneously capture both rolled and plain impressions as separate, searchable image sets.
- Automatic scaling of photographed latents. Tracker LE's scaling tool automatically compensates for varying resolutions when scanning photographed latents or importing images directly from a digital camera.
- AFIX Smart Extract automatically plots minutiae within rolled prints, plain impressions, palm prints and latents.
- Tracker LE allows the user to intervene at any time in all minutiae extraction and editing, ensuring that the Latent Print Examiner is always in complete control of the process.

AFIX TRACKER LE PROVIDES FLEXIBILITY WITH A WIDE RANGE OF FINGERPRINT, PALMPRINT AND LATENT IMAGE CAPTURE AND IMPORT OPTIONS.



AFIX TRACKER LE ALLOWS THE CAPTURE OF BOTH ROLLED AND PLAIN IMPRESSIONS AS SEPARATE TENPRINT SETS IN A SINGLE SCAN.



HARDWARE

AFIX Tracker LE systems include the following or equivalent hardware.

- Dell Precision Workstation (with keyboard and mouse)
- LCD Monitor
- FBI Approved Flatbed Scanner
- External Backup Drive
- APC Battery Backup (UPS)

AFIX SALES AND SUPPORT

+1.620.232.6420

Toll Free: 877.438.2349

Web: afixbiometrics.com

Email: afix_info@maxar.com

Address: 205 N. Walnut, Pittsburg, KS 66762

MAXAR