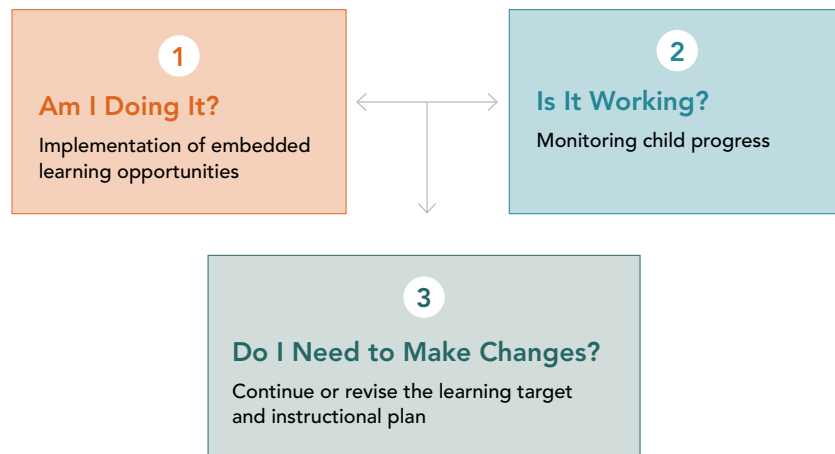




tips for teachers: embedded learning opportunities

Evaluating: Data-Based Decision Making

When we evaluate use of embedded learning opportunities, we focus on three primary questions: (1) Am I doing it? (2) Is it working? and (3) Do I need to make changes? These questions provide a framework for data-based decision making.



AM I DOING IT?

For children to make progress on their learning objectives, it is important to design a strategy for evaluating whether you are implementing embedded learning opportunities and whether you are implementing embedded learning opportunities so that complete instructional sequences occur.

- Collect data on: How many complete instructional sequences do you provide?

IS IT WORKING?

You will want to evaluate whether providing embedded learning opportunities is working by tracking the effects of the instruction on the child. To do this, you will need to collect data to monitor child progress.

- Collect data on: How many times did the child use the correct behavior?

DO I NEED TO MAKE CHANGES?

To decide if you need to make changes, you will need to consider the data you collected to answer *Am I doing it?* and *Is it working?* You will want to look at your data to see how many complete instructional sequences were delivered. Next you will want to consider child progress data. Use both sources of information to inform your decision.

See the materials that accompany this module for an activity matrix you can use to collect data.